

Datasheet for 600-401-EW1**STIM2 Antibody****Overview**

Description:	Anti-STIM2 (RABBIT) Antibody - 600-401-EW1
Item No.:	600-401-EW1
Size:	100 µg
Applications:	ELISA, IF, IHC, WB
Reactivity:	Human, Mouse, Rat
Host Species:	Rabbit

Product Details

Background: In T lymphocytes, the sole pathway for Ca⁺⁺ entry following antigen-receptor binding is through store-operated Ca⁺⁺-release-activated Ca⁺⁺ (CRAC) channels. These channels are made up of the pore-forming subunit ORAI1 and the stromal interaction molecule 1 (STIM1), a protein that functions as a Ca⁺⁺ sensor and activates the CRAC channels, migrating to the plasma membrane from endoplasmic reticulum (ER)-like sites which act as the Ca⁺⁺ store. A related molecule, STIM2, acts to inhibit the STIM1-mediated store-operated Ca⁺⁺ entry, and can form complexes with STIM1, suggesting they may play a coordinated role in controlling Ca⁺⁺ entry. At least three isoforms of STIM2 are known to exist. This STIM2 antibody is predicted to have no cross-reactivity to STIM1.

Synonyms:	STIM2 Antibody, KIAA1482, Stromal interaction molecule 2
Host Species:	Rabbit
Clonality:	Polyclonal
Format:	IgG

Target Details

Gene Name:	STIM2
Reactivity:	Human, Mouse, Rat
Immunogen Type:	Conjugated Peptide

Immunogen:	Anti-STIM2 antibody was prepared from whole rabbit serum produced by repeated immunizations with a 17 amino acid synthetic peptide from near the internal region of human STIM2.
Purity/Specificity:	Anti-STIM2 Antibody was affinity purified from monospecific antiserum by immunoaffinity chromatography. Cross reactivity with STIM2 from other sources has not been determined.
Relevant Links:	<ul style="list-style-type: none">• UniProtKB - Q9P246• GeneID - 57620• NCBI - NP_001162588.1

Application Details

Tested Applications:	ELISA, IF, IHC, WB
Application Note:	Anti-STIM2 Antibody has been tested for use in ELISA, Western Blotting, Immunohistochemistry and Immunofluorescence. Specific conditions for reactivity should be optimized by the end user. Expect a band at approximately 84 kDa in Western Blots of specific cell lysates and tissues.
Assay Dilutions:	All assays should be optimized by the user. Recommended dilutions (if any) may be listed below.
ELISA:	1:5,000-1:20,000
IF:	20 µg/mL
IHC:	2.5 µg/mL
WB:	0.5-2 µg/mL

Formulation

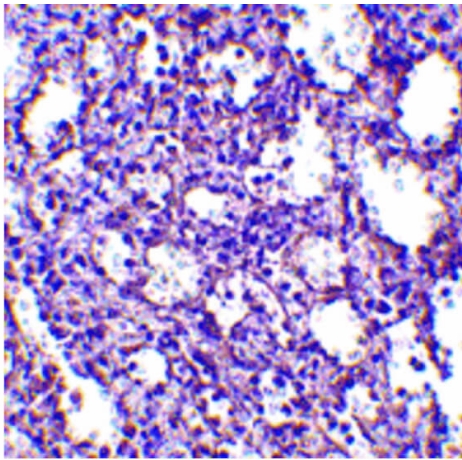
Physical State:	Liquid (sterile filtered)
Concentration:	1.0 mg/ml by UV absorbance at 280 nm
Buffer:	0.01 M Sodium Phosphate, 0.25 M Sodium Chloride, pH 7.2
Preservative:	0.02% (w/v) Sodium Azide
Stabilizer:	None

Shipping & Handling

Shipping Condition:	Dry Ice
----------------------------	---------

Storage Condition:	Store vial at -20° C prior to opening. Aliquot contents and freeze at -20° C or below for extended storage. Avoid cycles of freezing and thawing. Centrifuge product if not completely clear after standing at room temperature. This product is stable for several weeks at 4° C as an undiluted liquid. Dilute only prior to immediate use.
Expiration:	Expiration date is one (1) year from date of receipt.

Images



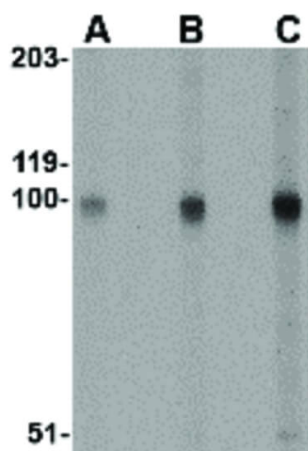
Immunohistochemistry

Immunohistochemistry of STIM2 antibody. Tissue: Human spleen tissue. Fixation: formalin fixed paraffin embedded. Antigen retrieval: not required. Primary antibody: STIM2 antibody at 2.5 µg/mL for 1 h at RT. Secondary antibody: Peroxidase rabbit secondary antibody at 1:10,000 for 45 min at RT. Localization: STIM2 is nuclear and occasionally cytoplasmic. Staining: STIM2 as precipitated red signal with hematoxylin purple nuclear counterstain.



Immunofluorescence Microscopy

Immunofluorescence Microscopy of STIM2 antibody. Tissue: Human spleen cells. Fixation: 0.5% PFA. Antigen retrieval: not required. Primary antibody: STIM2 antibody at 20 µg/mL for 1 h at RT. Secondary antibody: Fluorescein rabbit secondary antibody at 1:10,000 for 45 min at RT. Staining: STIM2 as red fluorescent signal.

**Western Blot**

Western Blot of STIM2 antibody. Lane A: A-20 cell lysate at 0.5 $\mu\text{g}/\text{mL}$. Lane B: A-20 cell lysate at 1 $\mu\text{g}/\text{mL}$. Lane C: A-20 cell lysate at 2 $\mu\text{g}/\text{mL}$. Load: 35 μg per lane. Secondary antibody: Peroxidase rabbit secondary antibody at 1:10,000 for 45 min at RT. Block: 5% BLOTTO overnight at 4°C. Predicted/Observed size: 54.6 kDa, ~99 kDa for STIM2.

Disclaimer

This product is for research use only and is not intended for therapeutic or diagnostic applications. Please contact a technical service representative for more information. All products of animal origin manufactured by Rockland Immunochemicals are derived from starting materials of North American origin. Collection was performed in United States Department of Agriculture (USDA) inspected facilities and all materials have been inspected and certified to be free of disease and suitable for exportation. All properties listed are typical characteristics and are not specifications. All suggestions and data are offered in good faith but without guarantee as conditions and methods of use of our products are beyond our control. All claims must be made within 30 days following the date of delivery. The prospective user must determine the suitability of our materials before adopting them on a commercial scale. Suggested uses of our products are not recommendations to use our products in violation of any patent or as a license under any patent of Rockland Immunochemicals, Inc. If you require a commercial license to use this material and do not have one, then return this material, unopened to: Rockland Inc., P.O. BOX 5199, Limerick, Pennsylvania, USA.