

Datasheet for 600-401-EU8

SREBF1 Antibody

Overview

Description:	Anti-SREBF1 (RABBIT) Antibody - 600-401-EU8
Item No.:	600-401-EU8
Size:	100 µg
Applications:	ELISA, IF, IHC, WB
Reactivity:	Human, Mouse
Host Species:	Rabbit

Product Details

Background:	The sterol regulatory element binding transcription factor 1 (SREBF1) is a transcription factor that binds to the sterol regulatory element-1 (SRE1), which is a decamer flanking the low density lipoprotein receptor gene and some genes involved in sterol biosynthesis (1). The related protein SREBF2 also binds SRE1 and activates transcription in an additive fashion to SREBF1 (2). SREBF1 is synthesized as a precursor that is attached to the nuclear membrane and endoplasmic reticulum. Following cleavage, the mature protein translocates to the nucleus and activates transcription by binding to the SRE1 (3). The SREBF1 proteins are important in the regulation of genes involved in lipid metabolism, while SREBF2 has been more closely associated with cholesterol synthesis and accumulation (4).
Synonyms:	SREBF1 Antibody, SREBP1, bHLHd1, SREBP-1c, BHLHD1, SREBP1, Sterol regulatory element-binding protein 1, Class D basic helix-loop-helix protein 1, SREBP-1
Host Species:	Rabbit
Clonality:	Polyclonal
Format:	IgG

Target Details

Gene Name:	SREBF1
Reactivity:	Human, Mouse
Immunogen Type:	Conjugated Peptide

Immunogen:	Anti-SREBF1 antibody was prepared from whole rabbit serum produced by repeated immunizations with a 17 amino acid peptide near the internal region of human SREBF1.
Purity/Specificity:	Anti-SREBF1 antibody was affinity purified from monospecific antiserum by immunoaffinity chromatography. SREBF1 antibody is human and mouse reactive. At least three isoforms of SREBF1 are known to exist. SREBF1 antibody is predicted not to cross-react with SREBF2.
Relevant Links:	<ul style="list-style-type: none">• UniProtKB - P36956• GeneID - 6720• NCBI - NP_001005291.1

Application Details

Tested Applications:	ELISA, IF, IHC, WB
Application Note:	Anti-SREBF1 Antibody has been tested for use in ELISA, Western Blotting, Immunohistochemistry and Immunofluorescence. Specific conditions for reactivity should be optimized by the end user. Expect a band at approximately 122 kDa in Western Blots of specific cell lysates and tissues.
Assay Dilutions:	All assays should be optimized by the user. Recommended dilutions (if any) may be listed below.
ELISA:	1:10,000 - 1:20,000
IF:	20 µg/mL
IHC:	5 µg/mL
WB:	1-2 µg/mL

Formulation

Physical State:	Liquid (sterile filtered)
Concentration:	1.0 mg/mL by UV absorbance at 280 nm
Buffer:	0.01 M Sodium Phosphate, 0.25 M Sodium Chloride, pH 7.2
Preservative:	0.02% (w/v) Sodium Azide
Stabilizer:	None

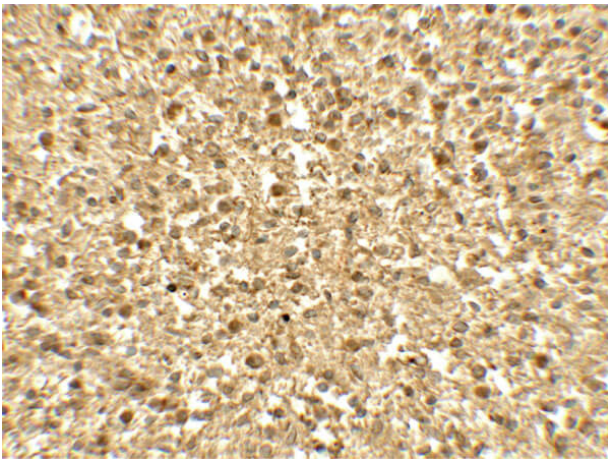
Shipping & Handling

Shipping Condition:	Dry Ice
----------------------------	---------

Storage Condition: Store vial at -20° C prior to opening. Aliquot contents and freeze at -20° C or below for extended storage. Avoid cycles of freezing and thawing. Centrifuge product if not completely clear after standing at room temperature. This product is stable for several weeks at 4° C as an undiluted liquid. Dilute only prior to immediate use.

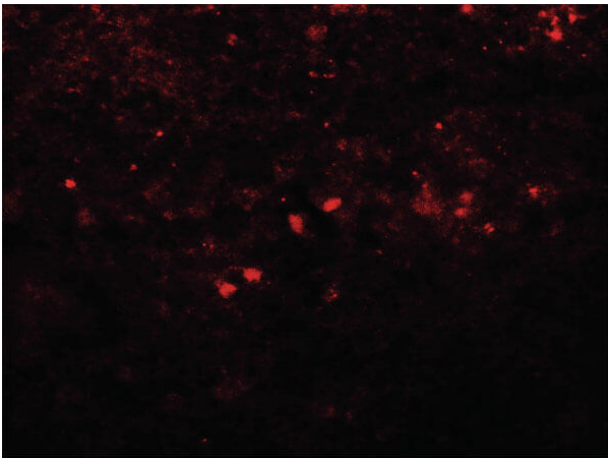
Expiration: Expiration date is one (1) year from date of receipt.

Images



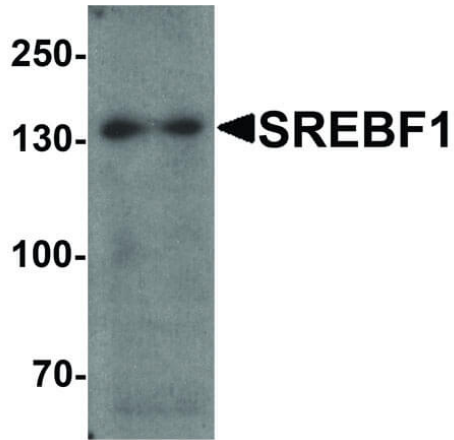
Immunohistochemistry

Immunohistochemistry of Rabbit anti-SREBF1 antibody. Tissue: human spleen tissue. Primary antibody: SREBF1 antibody at 5 µg/mL. Secondary antibody: Peroxidase rabbit secondary antibody at 1:5,000. Localization: SREBF1 is nuclear. Staining: SREBF1 as precipitated brown signal.



Immunofluorescence Microscopy

Immunofluorescence Microscopy of Rabbit anti-SREBF1 antibody. Tissue: human spleen. Primary antibody: SREBF1 antibody at 20 µg/mL. Secondary antibody: Fluorescein rabbit secondary antibody at 1:20,000. Localization: SREBF1 is nuclear. Staining: SREBF1 as red fluorescent signal.

**Western Blot**

Western Blot of Rabbit anti-SREBF1 antibody. Lane A: Daudi cell lysate. Primary antibody: SREBF1 antibody at 1 $\mu\text{g}/\text{mL}$ overnight at 4°C. Secondary antibody: Goat Anti-Rabbit HRP secondary antibody. Block: 5% BLOTTO. Predicted/Observed size: 129 kDa, 132 kDa for SREBF1.

Disclaimer

This product is for research use only and is not intended for therapeutic or diagnostic applications. Please contact a technical service representative for more information. All products of animal origin manufactured by Rockland Immunochemicals are derived from starting materials of North American origin. Collection was performed in United States Department of Agriculture (USDA) inspected facilities and all materials have been inspected and certified to be free of disease and suitable for exportation. All properties listed are typical characteristics and are not specifications. All suggestions and data are offered in good faith but without guarantee as conditions and methods of use of our products are beyond our control. All claims must be made within 30 days following the date of delivery. The prospective user must determine the suitability of our materials before adopting them on a commercial scale. Suggested uses of our products are not recommendations to use our products in violation of any patent or as a license under any patent of Rockland Immunochemicals, Inc. If you require a commercial license to use this material and do not have one, then return this material, unopened to: Rockland Inc., P.O. BOX 5199, Limerick, Pennsylvania, USA.