

**Datasheet for 600-401-ES2****SOGA1 Antibody****Overview**

|                      |  |
|----------------------|--|
| <b>Description:</b>  | Anti-SOGA1 (RABBIT) Antibody - 600-401-ES2 |
| <b>Item No.:</b>     | 600-401-ES2                                |
| <b>Size:</b>         | 100 µg                                     |
| <b>Applications:</b> | ELISA, IF, WB                              |
| <b>Reactivity:</b>   | Human                                      |
| <b>Host Species:</b> | Rabbit                                     |

**Product Details**

|                      |   |
|----------------------|---|
| <b>Background:</b>   | The recently identified protein suppressor of glucose by autophagy protein 1 (SOGA1) has been found to be involved in the regulation of autophagy (1). SOGA1 is thought to contribute to adiponectin-mediated insulin-dependent inhibition of autophagy during the activation of adenosine monophosphate kinase (AMPK) (1,2). SOGA1 contains an internal signal peptide that enables the secretion of a circulating fragment of SOGA1, providing a surrogate marker for intracellular SOGA1 levels (2). Knockdown of SOGA1 elevated glucose production in primary hepatocytes indicates that SOGA1 is an inhibitor of glucose production. It thus might be useful as a novel therapeutic target for diabetes (3). |
| <b>Synonyms:</b>     | SOGA1 Antibody, KIAA0889, C20orf117, SOGA, Protein SOGA1, SOGA family member 1, 80-kDa SOGA fragment, Suppressor of glucose by autophagy, Suppressor of glucose autophagy-associated protein 1  |
| <b>Host Species:</b> | Rabbit  |
| <b>Clonality:</b>    | Polyclonal  |
| <b>Format:</b>       | IgG   |

**Target Details**

|                        |                    |
|------------------------|--------------------|
| <b>Gene Name:</b>      | SOGA1              |
| <b>Reactivity:</b>     | Human              |
| <b>Immunogen Type:</b> | Conjugated Peptide |

|                            |   |
|----------------------------|---|
| <b>Immunogen:</b>          | Anti-SOGA1 antibody was prepared from whole rabbit serum produced by repeated immunizations with a 16 amino acid peptide near the C-terminus of human SOGA.                                   |
| <b>Purity/Specificity:</b> | Anti-SOGA1 Antibody was affinity purified from monospecific antiserum by immunoaffinity chromatography. SOGA1 antibody is human specific. At least four isoforms of SOGA1 are known to exist. |
| <b>Relevant Links:</b>     | <ul style="list-style-type: none"><li>• <a href="#">UniProtKB - O94964</a></li><li>• <a href="#">GeneID - 140710</a></li><li>• <a href="#">NCBI - NP_542194.2</a></li></ul>                   |

## Application Details

|                             |  |
|-----------------------------|--|
| <b>Tested Applications:</b> | ELISA, IF, WB  |
| <b>Application Note:</b>    | Anti-SOGA1 Antibody has been tested for use in ELISA, Western Blotting and Immunofluorescence. Specific conditions for reactivity should be optimized by the end user. Expect a band at approximately 160 kDa in Western Blots of specific cell lysates and tissues. |
| <b>Assay Dilutions:</b>     | All assays should be optimized by the user. Recommended dilutions (if any) may be listed below.  |
| <b>ELISA:</b>               | 1:10,000 - 1:20,000  |
| <b>IF:</b>                  | User Optimized   |
| <b>WB:</b>                  | 1 -2 µg/mL   |

## Formulation

|                        |   |
|------------------------|---|
| <b>Physical State:</b> | Liquid (sterile filtered)                               |
| <b>Concentration:</b>  | 1 mg/mL by UV absorbance at 280 nm                      |
| <b>Buffer:</b>         | 0.01 M Sodium Phosphate, 0.25 M Sodium Chloride, pH 7.2 |
| <b>Preservative:</b>   | 0.02% (w/v) Sodium Azide                                |
| <b>Stabilizer:</b>     | None  |

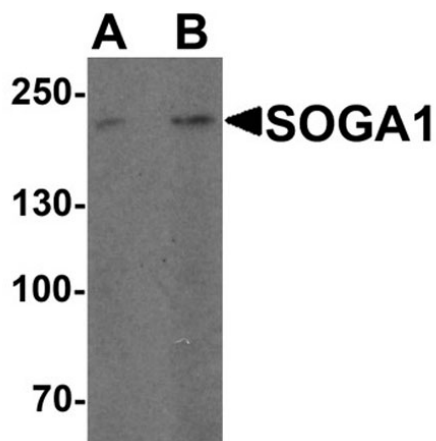
## Shipping & Handling

|                            |         |
|----------------------------|---------|
| <b>Shipping Condition:</b> | Dry Ice |
|----------------------------|---------|

**Storage Condition:** Store vial at -20° C prior to opening. Aliquot contents and freeze at -20° C or below for extended storage. Avoid cycles of freezing and thawing. Centrifuge product if not completely clear after standing at room temperature. This product is stable for several weeks at 4° C as an undiluted liquid. Dilute only prior to immediate use.

**Expiration:** Expiration date is one (1) year from date of receipt.

## Images

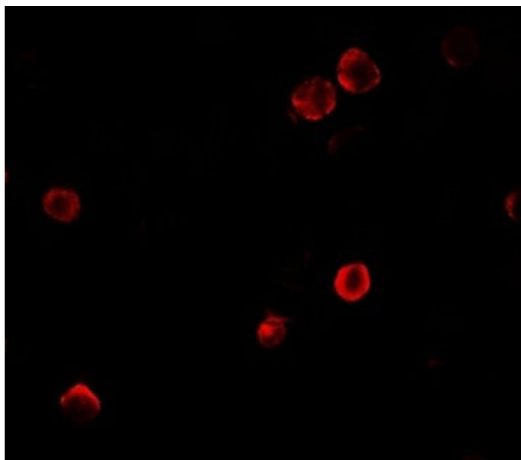


### Western Blot

Western blot of SOGA1.

Load: HeLa cell lysate.

Primary Antibody: SOGA1 antibody at (A) 1 and (B) 2 µg/ml.



### Immunofluorescence Microscopy

Immunofluorescence of SOGA1.

Cell: HeLa cells.

Primary Antibody: SOGA1 antibody at 5 µg/mL.

## Disclaimer

This product is for research use only and is not intended for therapeutic or diagnostic applications. Please contact a technical service representative for more information. All products of animal origin manufactured by Rockland Immunochemicals are derived from starting materials of North American origin. Collection was performed in United States Department of Agriculture (USDA) inspected facilities and all materials have been inspected and certified to be free of disease and suitable for exportation. All properties listed are typical characteristics and are not specifications. All suggestions and data are offered in good faith but without guarantee as conditions and methods of use of our products are beyond our control. All claims must be made within 30 days following the date of delivery. The prospective user must determine the suitability of our materials before adopting them on a commercial scale. Suggested uses of our products are not recommendations to use our products in violation of any patent or as a license under any patent of Rockland Immunochemicals, Inc. If you require a commercial license to use this material and do not have one, then return this material, unopened to: Rockland Inc., P.O. BOX 5199, Limerick, Pennsylvania, USA.