

Datasheet for 600-401-ES0**SOCS1 Antibody****Overview**

Description:	Anti-SOCS1 (RABBIT) Antibody - 600-401-ES0
Item No.:	600-401-ES0
Size:	100 µg
Applications:	ELISA, WB
Reactivity:	Human
Host Species:	Rabbit

Product Details

Background:	The Suppressor of cytokine signaling (SOCS) and cytokine-inducible SH2 proteins are a family of intracellular proteins which regulate the immune cell responses to cytokines. SOCS1 acts to suppress dendritic cell (DC) as well as T cell hyperactivation following cytokine signaling by inhibiting JAK tyrosine kinase, a kinase necessary for type I and II cytokine receptors to initiate signaling, by directly binding to the catalytic domain of the kinase. SOCS1 also possesses E3 ubiquitin protein ligase activity that results in the polyubiquitination of its target proteins and subsequent degradation by the proteasome. It is through this method that SOCS1 negatively regulates signaling by Toll-like receptors TLR2 and TLR4 by mediating the degradation of the TLR signaling adaptor protein TIRAP.
Synonyms:	SOCS1 Antibody, JAB, CIS1, SSI1, TIP3, CISH1, SSI-1, SOCS-1, Suppressor of cytokine signaling 1, JAK-binding protein
Host Species:	Rabbit
Clonality:	Polyclonal
Format:	IgG

Target Details

Gene Name:	SOCS1
Reactivity:	Human
Immunogen Type:	Conjugated Peptide

Immunogen:	Anti-SOCS1 antibody was prepared from whole rabbit serum produced by repeated immunizations with a 17 amino acid synthetic peptide from near the N-terminus of human SOCS1.
Purity/Specificity:	Anti-SOCS1 Antibody was affinity purified from monospecific antiserum by immunoaffinity chromatography. Cross reactivity with SOCS1 from other sources has not been determined.
Relevant Links:	<ul style="list-style-type: none">• UniProtKB - O15524• GeneID - 8651• NCBI - NP_003736.1

Application Details

Tested Applications:	ELISA, WB
Application Note:	Anti-SOCS1 Antibody has been tested for use in ELISA and Western Blotting. Specific conditions for reactivity should be optimized by the end user. Expect a band at approximately 24 kDa in Western Blots of specific cell lysates and tissues.
Assay Dilutions:	All assays should be optimized by the user. Recommended dilutions (if any) may be listed below.
ELISA:	1:10,000-1:40,000
WB:	1-4 µg/mL

Formulation

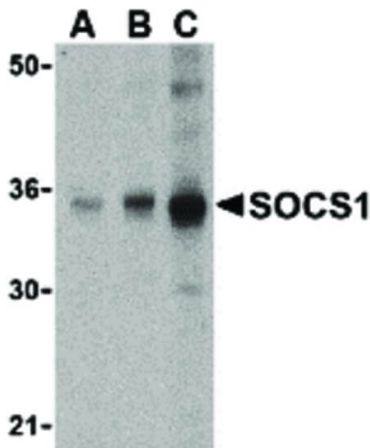
Physical State:	Liquid (sterile filtered)
Concentration:	1.0 mg/ml by UV absorbance at 280 nm
Buffer:	0.01 M Sodium Phosphate, 0.25 M Sodium Chloride, pH 7.2
Preservative:	0.02% (w/v) Sodium Azide
Stabilizer:	None

Shipping & Handling

Shipping Condition:	Dry Ice
Storage Condition:	Store vial at -20° C prior to opening. Aliquot contents and freeze at -20° C or below for extended storage. Avoid cycles of freezing and thawing. Centrifuge product if not completely clear after standing at room temperature. This product is stable for several weeks at 4° C as an undiluted liquid. Dilute only prior to immediate use.

Expiration: Expiration date is one (1) year from date of receipt.

Images



Western Blot

Western Blot of SOCS1 antibody in Human spleen cell lysate.

Lane A: SOCS1 antibody at 1 $\mu\text{g}/\text{mL}$. Lane B: SOCS1 antibody at 2 $\mu\text{g}/\text{mL}$. Lane C: SOCS1 antibody at 4 $\mu\text{g}/\text{mL}$.

Load: 35 μg per lane. Primary antibody: SOCS1 antibody at designated concentrations for overnight at 4°C. Secondary antibody: Peroxidase rabbit secondary antibody at 1:10,000 for 45 min at RT. Block: 5% BLOTTO overnight at 4°C.

Predicted/Observed size: 86 kDa, 34 kDa for SOCS1. Other band(s): SOCS1 splice variants and isoforms.

Disclaimer

This product is for research use only and is not intended for therapeutic or diagnostic applications. Please contact a technical service representative for more information. All products of animal origin manufactured by Rockland Immunochemicals are derived from starting materials of North American origin. Collection was performed in United States Department of Agriculture (USDA) inspected facilities and all materials have been inspected and certified to be free of disease and suitable for exportation. All properties listed are typical characteristics and are not specifications. All suggestions and data are offered in good faith but without guarantee as conditions and methods of use of our products are beyond our control. All claims must be made within 30 days following the date of delivery. The prospective user must determine the suitability of our materials before adopting them on a commercial scale. Suggested uses of our products are not recommendations to use our products in violation of any patent or as a license under any patent of Rockland Immunochemicals, Inc. If you require a commercial license to use this material and do not have one, then return this material, unopened to: Rockland Inc., P.O. BOX 5199, Limerick, Pennsylvania, USA.