

Datasheet for 600-401-ER6**SMURF1 Antibody****Overview**

Description:	Anti-SMURF1 (RABBIT) Antibody - 600-401-ER6
Item No.:	600-401-ER6
Size:	100 µg
Applications:	ELISA, IHC, WB
Reactivity:	Human, Mouse, Rat
Host Species:	Rabbit

Product Details

Background:	SMURF1 (SMAD ubiquitin regulatory factor 1) is a negative regulator of TGF-beta signaling (1). SMURF1 and SMURF2 are members of HECT domain E3 ubiquitin ligase which are involved in the enzymatic reactions of the Ub conjugating pathway (1,2). SMURF1 negatively regulates osteoblast activity and response to bone morphogenesis protein (BMP) through controlling MEKK2 degradation (3). SMURF1 has recently been shown to play a role in breast cancer cell migration and invasion through the downregulation of RhoA (4).
Synonyms:	SMAD specific E3 ubiquitin protein ligase 1, SMAD ubiquitination regulatory factor 1, E3 ubiquitin-protein ligase SMURF1
Host Species:	Rabbit
Clonality:	Polyclonal
Format:	IgG

Target Details

Gene Name:	SMURF1
Reactivity:	Human, Mouse, Rat
Immunogen Type:	Conjugated Peptide
Immunogen:	Anti-SMURF1 antibody was prepared from whole rabbit serum produced by repeated immunizations with a 16 amino acid peptide near the N-terminus of human SMURF1.

Purity/Specificity: Anti-SMURF1 antibody was affinity purified from monospecific antiserum by immunoaffinity chromatography. SMURF1 antibody is human, mouse and rat reactive. At least three isoforms of SMURF1 are known to exist this antibody will recognize all three isoforms. SMURF1 is predicted to not cross-react with SMURF2.

Relevant Links:

- [UniProtKB - Q9HCE7](#)
- [GeneID - 57154](#)
- [NCBI - NP_001186776.1](#)

Application Details

Tested Applications: ELISA, IHC, WB

Application Note: Anti-SMURF1 Antibody has been tested for use in ELISA, Western Blotting, and Immunohistochemistry. Specific conditions for reactivity should be optimized by the end user. Expect a band at approximately 86 kDa in Western Blots of specific cell lysates and tissues.

Assay Dilutions: All assays should be optimized by the user. Recommended dilutions (if any) may be listed below.

ELISA: 1:10,000 - 1:20,000

IHC: 5 µg/mL

WB: 1-2 µg/mL

Formulation

Physical State: Liquid (sterile filtered)

Concentration: 1.0 mg/mL by UV absorbance at 280 nm

Buffer: 0.01 M Sodium Phosphate, 0.25 M Sodium Chloride, pH 7.2

Preservative: 0.02% (w/v) Sodium Azide

Stabilizer: None

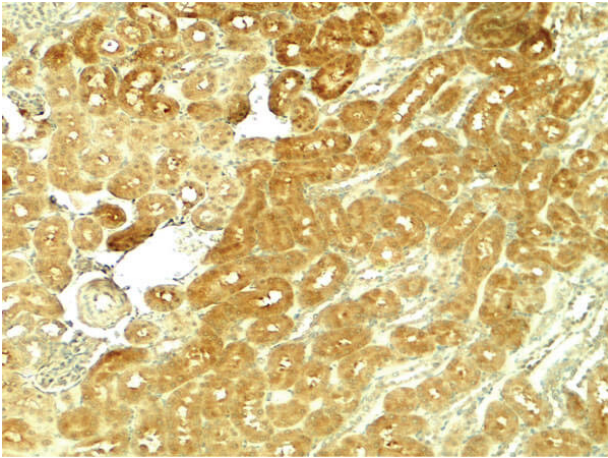
Shipping & Handling

Shipping Condition: Dry Ice

Storage Condition: Store vial at -20° C prior to opening. Aliquot contents and freeze at -20° C or below for extended storage. Avoid cycles of freezing and thawing. Centrifuge product if not completely clear after standing at room temperature. This product is stable for several weeks at 4° C as an undiluted liquid. Dilute only prior to immediate use.

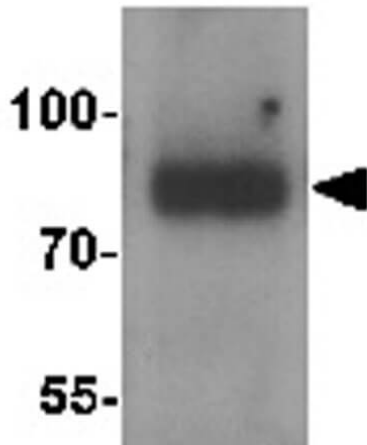
Expiration: Expiration date is one (1) year from date of receipt.

Images



Immunohistochemistry

Immunohistochemistry of Rabbit anti-SMURF1 antibody. Tissue: rat kidney. Primary antibody: SMURF1 antibody at 5 $\mu\text{g}/\text{mL}$. Secondary antibody: Peroxidase rabbit secondary antibody at 1:5,000. Localization: SMURF1 is cytoplasmic and located on the cell membrane. Staining: SMURF1 as precipitated brown signal.



Western Blot

Western Blot of Rabbit anti-SMURF1 antibody. Lane A: 293 cell lysate. Primary antibody: SMURF1 antibody at 1 $\mu\text{g}/\text{mL}$ overnight at 4°C. Secondary antibody: Rabbit secondary antibody. Block: 5% BLOTTO. Predicted/Observed size: 80, 83 kDa, 78 kDa for SMURF1.

Disclaimer

This product is for research use only and is not intended for therapeutic or diagnostic applications. Please contact a technical service representative for more information. All products of animal origin manufactured by Rockland Immunochemicals are derived from starting materials of North American origin. Collection was performed in United States Department of Agriculture (USDA) inspected facilities and all materials have been inspected and certified to be free of disease and suitable for exportation. All properties listed are typical characteristics and are not specifications. All suggestions and data are offered in good faith but without guarantee as conditions and methods of use of our products are beyond our control. All claims must be made within 30 days following the date of delivery. The prospective user must determine the suitability of our materials before adopting them on a commercial scale. Suggested uses of our products are not recommendations to use our products in violation of any patent or as a license under any patent of Rockland Immunochemicals, Inc. If you require a commercial license to use this material and do not have one, then return this material, unopened to: Rockland Inc., P.O. BOX 5199, Limerick, Pennsylvania, USA.