

## Datasheet for 600-401-EN5

# SLAMF3 Antibody

### Overview

<b>Description:</b>	Anti-SLAMF3 (RABBIT) Antibody - 600-401-EN5
<b>Item No.:</b>	600-401-EN5
<b>Size:</b>	100 µg
<b>Applications:</b>	ELISA, IF, IHC, WB
<b>Reactivity:</b>	Human, Mouse, Rat
<b>Host Species:</b>	Rabbit

### Product Details

<b>Background:</b>	The signaling lymphocyte-activation molecule family member 3 (SLAMF3), also known as LY9, is a cell surface receptor that is expressed on T and B lymphocytes and belongs to the CD150/SLAMF1 receptor family. SLAMF3 was identified through a yeast two-hybrid screening in which SLAMF3 bound to the X-linked lymphoproliferative disease gene product SAP, suggesting that in activated T cells, SLAMF3 signaling can be triggered SAP. Its expression on the cell surface appears to be regulated via its interaction with the clathrin-associated adaptor complex 2 (AP-2). Despite its similarity to SLAMF1 in structure and interactions with SAP, SLAMF3-deficient mice do not exhibit phenotypic characteristics associated with SLAMF1- and SAP-deficient mice, suggesting that SLAMF3 plays other roles in T cell activation.
<b>Synonyms:</b>	SLAMF3 Antibody, hly9, mLY9, CD229, SLAMF3, T-lymphocyte surface antigen Ly-9, Cell surface molecule Ly-9
<b>Host Species:</b>	Rabbit
<b>Clonality:</b>	Polyclonal
<b>Format:</b>	IgG

### Target Details

<b>Gene Name:</b>	LY9
<b>Reactivity:</b>	Human, Mouse, Rat
<b>Immunogen Type:</b>	Conjugated Peptide

<b>Immunogen:</b>	Anti-SLAMF3 antibody was prepared from whole rabbit serum produced by repeated immunizations with an 18 amino acid synthetic peptide near the C-terminus of human SLAMF3.
<b>Purity/Specificity:</b>	Anti-SLAMF3 Antibody was affinity purified from monospecific antiserum by immunoaffinity chromatography. At least three isoforms of SLAMF3 are known to exist. SLAMF3 antibody is predicted to not cross-react with other SLAM protein family members.
<b>Relevant Links:</b>	<ul style="list-style-type: none"><li>• <a href="#">UniProtKB - Q9HBG7</a></li><li>• <a href="#">GeneID - 4063</a></li><li>• <a href="#">NCBI - NP_1769</a></li></ul>

## Application Details

<b>Tested Applications:</b>	ELISA, IF, IHC, WB
<b>Application Note:</b>	Anti-SLAMF3 Antibody has been tested for use in ELISA, Western Blotting, Immunocytochemistry and Immunofluorescence. Specific conditions for reactivity should be optimized by the end user. Expect a band at approximately 72 kDa in Western Blots of specific cell lysates and tissues.
<b>Assay Dilutions:</b>	All assays should be optimized by the user. Recommended dilutions (if any) may be listed below.
<b>ELISA:</b>	1:10,000 - 1:20,000
<b>IF:</b>	20 µg/mL
<b>WB:</b>	1-2 µg/mL

## Formulation

<b>Physical State:</b>	Liquid (sterile filtered)
<b>Concentration:</b>	1 mg/mL by UV absorbance at 280 nm
<b>Buffer:</b>	0.01 M Sodium Phosphate, 0.25 M Sodium Chloride, pH 7.2
<b>Preservative:</b>	0.02% (w/v) Sodium Azide
<b>Stabilizer:</b>	None

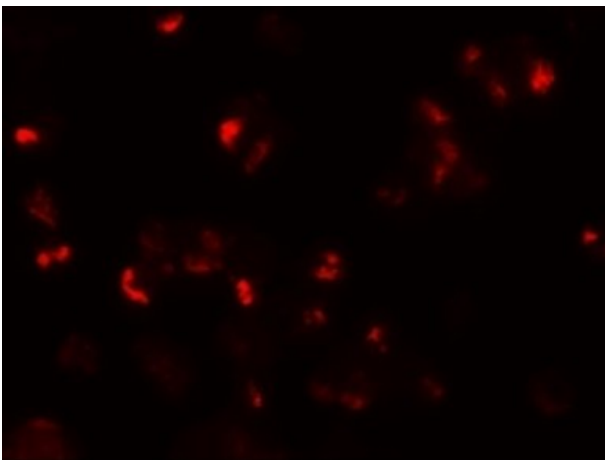
## Shipping & Handling

<b>Shipping Condition:</b>	Dry Ice
----------------------------	---------

**Storage Condition:** Store vial at -20° C prior to opening. Aliquot contents and freeze at -20° C or below for extended storage. Avoid cycles of freezing and thawing. Centrifuge product if not completely clear after standing at room temperature. This product is stable for several weeks at 4° C as an undiluted liquid. Dilute only prior to immediate use.

**Expiration:** Expiration date is one (1) year from date of receipt.

## Images

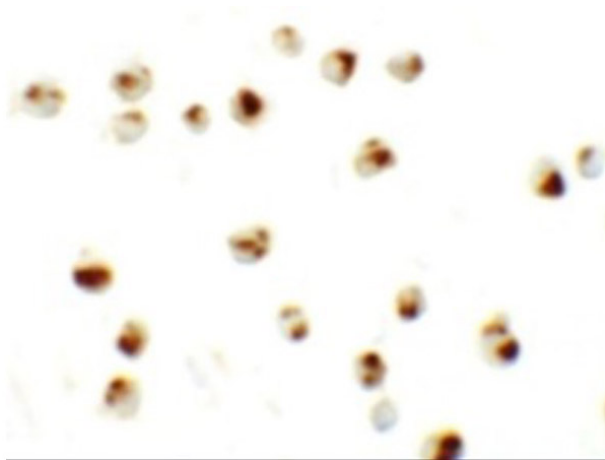


### **Immunofluorescence Microscopy**

Immunofluorescence of SLAMF3.

Cell: 293 cells.

Primary Antibody: SLAMF3 antibody at 20 µg/mL.

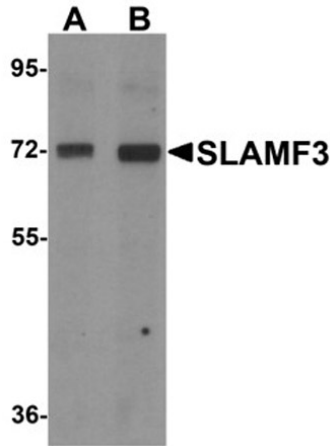


### **Immunocytochemistry**

Immunocytochemistry of SLAMF3.

Cell: 293 cells.

Primary Antibody: SLAMF3 antibody at 10 µg/mL.

**Western Blot**

Western blot analysis of SLAMF3.

Cell: 293 cell lysate.

Primary Antibody: SLAMF3 antibody at (A) 1 $\mu$ g/mL and (B) 2 $\mu$ g/mL.

**Disclaimer**

This product is for research use only and is not intended for therapeutic or diagnostic applications. Please contact a technical service representative for more information. All products of animal origin manufactured by Rockland Immunochemicals are derived from starting materials of North American origin. Collection was performed in United States Department of Agriculture (USDA) inspected facilities and all materials have been inspected and certified to be free of disease and suitable for exportation. All properties listed are typical characteristics and are not specifications. All suggestions and data are offered in good faith but without guarantee as conditions and methods of use of our products are beyond our control. All claims must be made within 30 days following the date of delivery. The prospective user must determine the suitability of our materials before adopting them on a commercial scale. Suggested uses of our products are not recommendations to use our products in violation of any patent or as a license under any patent of Rockland Immunochemicals, Inc. If you require a commercial license to use this material and do not have one, then return this material, unopened to: Rockland Inc., P.O. BOX 5199, Limerick, Pennsylvania, USA.