

Datasheet for 600-401-EN4

SLAMF2 Antibody

Overview

Description:	Anti-SLAMF2 (RABBIT) Antibody - 600-401-EN4
Item No.:	600-401-EN4
Size:	100 µg
Applications:	ELISA, WB
Reactivity:	Human, Mouse, Rat
Host Species:	Rabbit

Product Details

Background:	The signaling lymphocyte-activation molecule family member 2 (SLAMF2), also known as CD48, is a GPI-anchored protein that exists as both a soluble and membrane-associated form and is expressed in almost all leukocyte populations particularly in mitogen-stimulated human lymphocytes. SLAMF2 is a high-affinity ligand for SLAMF4, also known as 2B4, as well as a low-affinity ligand for CD2, and can thus can stimulate cells expressing these receptors. It has been shown to be an IL-3-induced activating receptor on eosinophils and is likely to be involved in promoting allergic inflammation. SLAMF2 is also thought to be involved in the IL-18/IL-18R signaling cascade in T and natural killer cells to produce interferon-gamma.
Synonyms:	SLAMF2 Antibody, BCM1, BLAST, hCD48, mCD48, BLAST1, SLAMF2, MEM-102, BCM1, CD48 antigen, B-lymphocyte activation marker BLAST-1
Host Species:	Rabbit
Clonality:	Polyclonal
Format:	IgG

Target Details

Gene Name:	CD48
Reactivity:	Human, Mouse, Rat
Immunogen Type:	Conjugated Peptide

Immunogen:	Anti-SLAMF2 antibody was prepared from whole rabbit serum produced by repeated immunizations with a 19 amino acid synthetic peptide near the internal region of human SLAMF2.
Purity/Specificity:	Anti-SLAMF2 Antibody was affinity purified from monospecific antiserum by immunoaffinity chromatography. Two isoforms of SLAMF2 are known to exist; this antibody will recognize both isoforms. SLAMF2 antibody is predicted to not cross-react with other SLAM protein family members.
Relevant Links:	<ul style="list-style-type: none">• UniProtKB - P09326• GeneID - 962• NCBI - NP_1769

Application Details

Tested Applications:	ELISA, WB
Application Note:	Anti-SLAMF2 Antibody has been tested for use in ELISA and Western Blotting. Specific conditions for reactivity should be optimized by the end user. Expect a band at approximately 28 kDa in Western Blots of specific cell lysates and tissues.
Assay Dilutions:	All assays should be optimized by the user. Recommended dilutions (if any) may be listed below.
ELISA:	1:10,000 - 1:20,000
WB:	1-2 µg/mL

Formulation

Physical State:	Liquid (sterile filtered)
Concentration:	1 mg/mL by UV absorbance at 280 nm
Buffer:	0.01 M Sodium Phosphate, 0.25 M Sodium Chloride, pH 7.2
Preservative:	0.02% (w/v) Sodium Azide
Stabilizer:	None

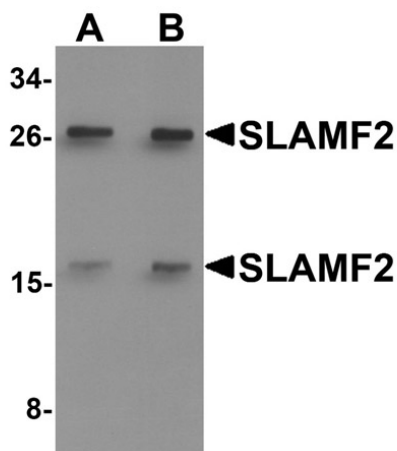
Shipping & Handling

Shipping Condition:	Dry Ice
----------------------------	---------

Storage Condition: Store vial at -20° C prior to opening. Aliquot contents and freeze at -20° C or below for extended storage. Avoid cycles of freezing and thawing. Centrifuge product if not completely clear after standing at room temperature. This product is stable for several weeks at 4° C as an undiluted liquid. Dilute only prior to immediate use.

Expiration: Expiration date is one (1) year from date of receipt.

Images



Western Blot

Western blot analysis of SLAMF2.

Load: rat lung tissue lysate.

Primary Antibody: SLAMF2 antibody at (A) 1µg/mL and (B) 2µg/mL.

Disclaimer

This product is for research use only and is not intended for therapeutic or diagnostic applications. Please contact a technical service representative for more information. All products of animal origin manufactured by Rockland Immunochemicals are derived from starting materials of North American origin. Collection was performed in United States Department of Agriculture (USDA) inspected facilities and all materials have been inspected and certified to be free of disease and suitable for exportation. All properties listed are typical characteristics and are not specifications. All suggestions and data are offered in good faith but without guarantee as conditions and methods of use of our products are beyond our control. All claims must be made within 30 days following the date of delivery. The prospective user must determine the suitability of our materials before adopting them on a commercial scale. Suggested uses of our products are not recommendations to use our products in violation of any patent or as a license under any patent of Rockland Immunochemicals, Inc. If you require a commercial license to use this material and do not have one, then return this material, unopened to: Rockland Inc., P.O. BOX 5199, Limerick, Pennsylvania, USA.