

**Datasheet for 600-401-ENO****SLAIN1 Antibody****Overview**

<b>Description:</b>	Anti-SLAIN1 (RABBIT) Antibody - 600-401-ENO
<b>Item No.:</b>	600-401-ENO
<b>Size:</b>	100 µg
<b>Applications:</b>	ELISA, IHC
<b>Reactivity:</b>	Human
<b>Host Species:</b>	Rabbit

**Product Details**

<b>Background:</b>	SLAIN1 is a novel stem cell protein that was identified by transcriptional profiling of mouse and human embryonic stem cells (ESCs) and is expressed at the stem cell and epiblast stages. Unlike its more widely expressed homolog SLAIN2, SLAIN1 was found to be expressed in the epiblast, nervous system, tailbud and somites of the developing mouse embryo later experiments suggested that SLAIN1 may play a role in the development of the nervous system as well as in the morphogenesis of several embryonic structures.
<b>Synonyms:</b>	SLAIN1 Antibody, C13orf32, C13orf32, SLAIN motif-containing protein 1
<b>Host Species:</b>	Rabbit
<b>Clonality:</b>	Polyclonal
<b>Format:</b>	IgG

**Target Details**

<b>Gene Name:</b>	SLAIN1
<b>Reactivity:</b>	Human
<b>Immunogen Type:</b>	Conjugated Peptide
<b>Immunogen:</b>	Anti-SLAIN1 antibody was prepared from whole rabbit serum produced by repeated immunizations with a 16 amino acid synthetic peptide near the internal region of human SLAIN1.

**Purity/Specificity:** Anti-SLAIN1 Antibody was affinity purified from monospecific antiserum by immunoaffinity chromatography. At least three isoforms of SLAIN1 are known to exist; this antibody will detect only the largest isoform. SLAIN1 antibody is predicted not to cross-react with SLAIN2.

**Relevant Links:**

- [UniProtKB - Q8ND83](#)
- [GeneID - 122060](#)
- [NCBI - NP\\_002456](#)

## Application Details

**Tested Applications:** ELISA, IHC

**Application Note:** Anti-SLAIN1 Antibody has been tested for use in ELISA, and Immunohistochemistry. Specific conditions for reactivity should be optimized by the end user. Expect a band at approximately 61 kDa in Western Blots of specific cell lysates and tissues.

**Assay Dilutions:** All assays should be optimized by the user. Recommended dilutions (if any) may be listed below.

**ELISA:** User Optimized

**IHC:** 5 µg/mL

## Formulation

**Physical State:** Liquid (sterile filtered)

**Concentration:** 1 mg/mL by UV absorbance at 280 nm

**Buffer:** 0.01 M Sodium Phosphate, 0.25 M Sodium Chloride, pH 7.2

**Preservative:** 0.02% (w/v) Sodium Azide

**Stabilizer:** None

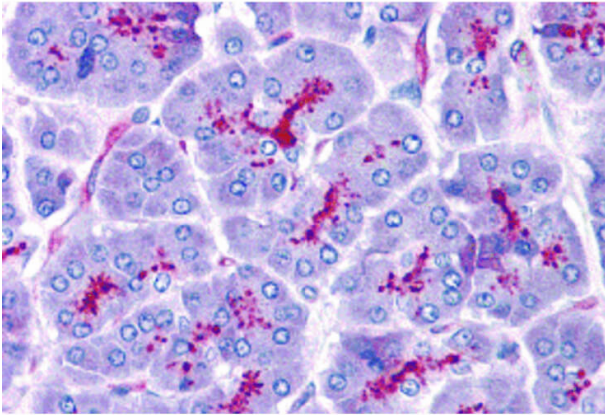
## Shipping & Handling

**Shipping Condition:** Dry Ice

**Storage Condition:** Store vial at -20° C prior to opening. Aliquot contents and freeze at -20° C or below for extended storage. Avoid cycles of freezing and thawing. Centrifuge product if not completely clear after standing at room temperature. This product is stable for several weeks at 4° C as an undiluted liquid. Dilute only prior to immediate use.

**Expiration:** Expiration date is one (1) year from date of receipt.

## Images



### Immunohistochemistry

Immunohistochemistry of SLAIN1 antibody. Tissue: Human pancreas. Fixation: formalin fixed paraffin embedded. Antigen retrieval: not required. Primary antibody: SLAIN1 antibody at 5 µg/mL for 1 h at RT. Secondary antibody: Peroxidase rabbit secondary antibody at 1:10,000 for 45 min at RT. Staining: SLAIN1 as precipitated red signal with blue nuclear counterstain.

## Disclaimer

This product is for research use only and is not intended for therapeutic or diagnostic applications. Please contact a technical service representative for more information. All products of animal origin manufactured by Rockland Immunochemicals are derived from starting materials of North American origin. Collection was performed in United States Department of Agriculture (USDA) inspected facilities and all materials have been inspected and certified to be free of disease and suitable for exportation. All properties listed are typical characteristics and are not specifications. All suggestions and data are offered in good faith but without guarantee as conditions and methods of use of our products are beyond our control. All claims must be made within 30 days following the date of delivery. The prospective user must determine the suitability of our materials before adopting them on a commercial scale. Suggested uses of our products are not recommendations to use our products in violation of any patent or as a license under any patent of Rockland Immunochemicals, Inc. If you require a commercial license to use this material and do not have one, then return this material, unopened to: Rockland Inc., P.O. BOX 5199, Limerick, Pennsylvania, USA.