

**Datasheet for 600-401-EM9****SkiP Antibody****Overview**

<b>Description:</b>	Anti-SkiP (RABBIT) Antibody - 600-401-EM9
<b>Item No.:</b>	600-401-EM9
<b>Size:</b>	100 µg
<b>Applications:</b>	ELISA, IF, IHC, WB
<b>Reactivity:</b>	Human, Mouse, Rat
<b>Host Species:</b>	Rabbit

**Product Details**

<b>Background:</b>	TGF-beta and the bone morphogenic proteins (BMPs) are key signaling proteins that regulate numerous cellular processes such as embryonic development and tumor genesis. Both signal through the Smad protein family and are negatively regulated by Ski and SnoN, two related proto-oncoproteins. Ski functions by binding to the Smad proteins activated by TGF-beta and the (BMPs) and preventing their phosphorylation, inhibiting their ability to bind DNA and activate the transcription of downstream genes. SkiP was originally identified as a Ski-interacting protein and was later found to augment the signals induced by TGF-beta but inhibit transcription induced by BMP-2 in C2C12 cells, suggesting that SkiP is a key player in the signaling cascades initiated by TGF-beta and the BMP protein family.
<b>Synonyms:</b>	SkiP Antibody, Bx42, SKIP, Prp45, SKIIP, PRPF45, NCOA-62, SNW domain-containing protein 1, Nuclear protein SkiP, FUN20, SKIP1
<b>Host Species:</b>	Rabbit
<b>Clonality:</b>	Polyclonal
<b>Format:</b>	IgG

**Target Details**

<b>Gene Name:</b>	SNW1
<b>Reactivity:</b>	Human, Mouse, Rat
<b>Immunogen Type:</b>	Conjugated Peptide

<b>Immunogen:</b>	Anti-SkiP antibody was prepared from whole rabbit serum produced by repeated immunizations with a 16 amino acid synthetic peptide from near the C-terminus of human SkiP.
<b>Purity/Specificity:</b>	Anti-SkiP Antibody was affinity purified from monospecific antiserum by immunoaffinity chromatography. Cross reactivity with SkiP from other sources has not been determined.
<b>Relevant Links:</b>	<ul style="list-style-type: none"><li>• <a href="#">UniProtKB - Q13573</a></li><li>• <a href="#">GeneID - 22938</a></li><li>• <a href="#">NCBI - NP_036377</a></li></ul>

## Application Details

<b>Tested Applications:</b>	ELISA, IF, IHC, WB
<b>Application Note:</b>	Anti-SkiP Antibody has been tested for use in ELISA, Western Blotting, Immunohistochemistry, and Immunofluorescence. Expect a band at approximately 61 kDa in Western Blots using positive control mouse skeletal muscle lysate, human kidney tissue for IF, or other specific cell lysates and tissues. Specific conditions for reactivity should be optimized by the end user.
<b>Assay Dilutions:</b>	All assays should be optimized by the user. Recommended dilutions (if any) may be listed below.
<b>ELISA:</b>	1:5,000 - 1:10,000
<b>IF:</b>	20 µg/mL
<b>IHC:</b>	20 µg/mL
<b>WB:</b>	0.5 µg/mL

## Formulation

<b>Physical State:</b>	Liquid (sterile filtered)
<b>Concentration:</b>	1.0 mg/mL by UV absorbance at 280 nm
<b>Buffer:</b>	0.01 M Sodium Phosphate, 0.25 M Sodium Chloride, pH 7.2
<b>Preservative:</b>	0.02% (w/v) Sodium Azide
<b>Stabilizer:</b>	None

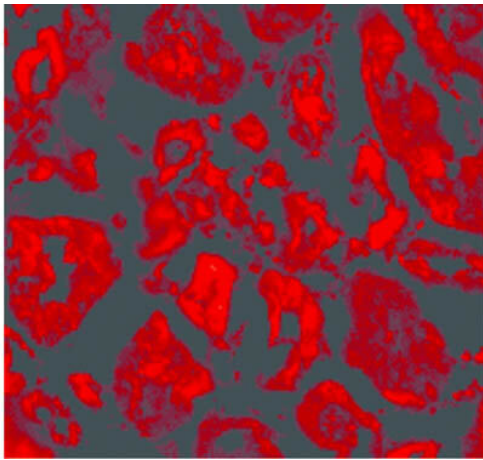
## Shipping & Handling

<b>Shipping Condition:</b>	Dry Ice
----------------------------	---------

**Storage Condition:** Store vial at -20° C prior to opening. Aliquot contents and freeze at -20° C or below for extended storage. Avoid cycles of freezing and thawing. Centrifuge product if not completely clear after standing at room temperature. This product is stable for several weeks at 4° C as an undiluted liquid. Dilute only prior to immediate use.

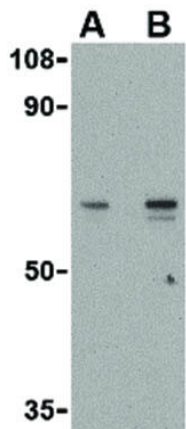
**Expiration:** Expiration date is one (1) year from date of receipt.

## Images



### Immunofluorescence Microscopy

Immunofluorescence Microscopy of SkiP antibody. Tissue: Human kidney tissue. Fixation: 0.5% PFA. Antigen retrieval: not required. Primary antibody: SkiP antibody at 20 µg/mL for 1 h at RT. Secondary antibody: Fluorescein rabbit secondary antibody at 1:10,000 for 45 min at RT. Localization: SkiP is nuclear. Staining: SkiP as red fluorescent signal.



### Western Blot

Western Blot of SkiP antibody. Lane 1: Mouse skeletal muscle tissue lysate with SkiP at 0.5 µg/mL. Lane 2: Mouse skeletal muscle tissue lysate with SkiP at 1 µg/mL. Load: 35 µg per lane. Secondary antibody: Peroxidase rabbit secondary antibody at 1:10,000 for 45 min at RT. Block: 5% BLOTTO overnight at 4°C. Predicted/Observed size: 61.5 kDa, 57 kDa for SkiP. Other band(s): SkiP splice variants and isoforms.

## Disclaimer

This product is for research use only and is not intended for therapeutic or diagnostic applications. Please contact a technical service representative for more information. All products of animal origin manufactured by Rockland Immunochemicals are derived from starting materials of North American origin. Collection was performed in United States Department of Agriculture (USDA) inspected facilities and all materials have been inspected and certified to be free of disease and suitable for exportation. All properties listed are typical characteristics and are not specifications. All suggestions and data are offered in good faith but without guarantee as conditions and methods of use of our products are beyond our control. All claims must be made within 30 days following the date of delivery. The prospective user must determine the suitability of our materials before adopting them on a commercial scale. Suggested uses of our products are not recommendations to use our products in violation of any patent or as a license under any patent of Rockland Immunochemicals, Inc. If you require a commercial license to use this material and do not have one, then return this material, unopened to: Rockland Inc., P.O. BOX 5199, Limerick, Pennsylvania, USA.