

Datasheet for 600-401-EM8**SKI2W Antibody****Overview**

Description:	Anti-SKI2W (RABBIT) Antibody - 600-401-EM8
Item No.:	600-401-EM8
Size:	100 µg
Applications:	ELISA, IF, IHC, WB
Reactivity:	Human, Mouse, Rat
Host Species:	Rabbit

Product Details

Background:	SKI2W (SKIV2L, Helicase-like protein), a DEVH-box protein, is a component of the SKI complex which is involved in the regulation of translation and RNA turnover (1,2). SKI2W is a nucleolar and cytoplasmic protein that has a putative RNA helicase domain (2). The potential roles of Ski2W on the clearance of degraded nuclear and cytoplasmic RNA raised their possibilities as susceptibility genes of systemic lupus erythematosus (3,4).
Synonyms:	Superkiller viralicidic activity 2-like, DDX13, Helicase-like protein, Helicase SKI2W, HLP, SKI2, SKIV2, SKIV2L
Host Species:	Rabbit
Clonality:	Polyclonal
Format:	IgG

Target Details

Gene Name:	SKIV2L
Reactivity:	Human, Mouse, Rat
Immunogen Type:	Conjugated Peptide
Immunogen:	Anti-SKI2W antibody was prepared from whole rabbit serum produced by repeated immunizations with a 16 amino acid peptide near the N-terminus of human SKI2W.

Purity/Specificity: Anti-SKI2W antibody was affinity purified from monospecific antiserum by immunoaffinity chromatography. SKI2W antibody is human, mouse and rat reactive. At least two isoforms of SKI2W are known to exist; this antibody will detect both isoforms.

Relevant Links:

- [UniProtKB - Q15477](#)
- [GeneID - 6499](#)
- [NCBI - NP_008860](#)

Application Details

Tested Applications: ELISA, IF, IHC, WB

Application Note: Anti-SKI2W Antibody has been tested for use in ELISA, immunohistochemistry, immunofluorescence, and Western Blotting. Specific conditions for reactivity should be optimized by the end user. Expect a band at approximately 138 kDa in Western Blots of specific cell lysates and tissues.

Assay Dilutions: All assays should be optimized by the user. Recommended dilutions (if any) may be listed below.

ELISA: 1:10,000-1:20,000

IF: 20 µg/mL

IHC: 5 µg/mL

WB: 1-2 µg/mL

Formulation

Physical State: Liquid (sterile filtered)

Concentration: 1.0 mg/ml by UV absorbance at 280 nm

Buffer: 0.01 M Sodium Phosphate, 0.25 M Sodium Chloride, pH 7.2

Preservative: 0.02% (w/v) Sodium Azide

Stabilizer: None

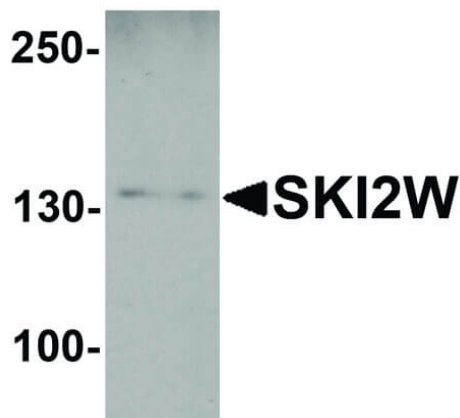
Shipping & Handling

Shipping Condition: Dry Ice

Storage Condition: Store vial at -20° C prior to opening. Aliquot contents and freeze at -20° C or below for extended storage. Avoid cycles of freezing and thawing. Centrifuge product if not completely clear after standing at room temperature. This product is stable for several weeks at 4° C as an undiluted liquid. Dilute only prior to immediate use.

Expiration: Expiration date is one (1) year from date of receipt.

Images



Western Blot

Western Blot of Rabbit anti-SKI2W antibody. Lane A: mouse stomach tissue lysate. Primary antibody: SKI2W antibody at 1 µg/mL overnight at 4°C. Secondary antibody: Goat anti-Rabbit HRP secondary antibody. Block: 5% BLOTTO. Predicted/Observed size: 113,137 kDa, 135 kDa for SKI2W.

Disclaimer

This product is for research use only and is not intended for therapeutic or diagnostic applications. Please contact a technical service representative for more information. All products of animal origin manufactured by Rockland Immunochemicals are derived from starting materials of North American origin. Collection was performed in United States Department of Agriculture (USDA) inspected facilities and all materials have been inspected and certified to be free of disease and suitable for exportation. All properties listed are typical characteristics and are not specifications. All suggestions and data are offered in good faith but without guarantee as conditions and methods of use of our products are beyond our control. All claims must be made within 30 days following the date of delivery. The prospective user must determine the suitability of our materials before adopting them on a commercial scale. Suggested uses of our products are not recommendations to use our products in violation of any patent or as a license under any patent of Rockland Immunochemicals, Inc. If you require a commercial license to use this material and do not have one, then return this material, unopened to: Rockland Inc., P.O. BOX 5199, Limerick, Pennsylvania, USA.