

Datasheet for 600-401-EM5**SKA2 Antibody****Overview**

Description:	Anti-SKA2 (RABBIT) Antibody - 600-401-EM5
Item No.:	600-401-EM5
Size:	100 µg
Applications:	ELISA, WB
Reactivity:	Human, Mouse
Host Species:	Rabbit

Product Details

Background: Upon entry into mitosis, the cell's microtubule (MT) network forms the mitotic spindle, allowing the segregation of paired chromosomes. Proteinaceous structures on centromeric chromatin termed kinetochores (KT) are essential for the proper attachment of the chromosomes to the spindle MTs. A recently discovered spindle and kinetochore complex, comprised of proteins SKA1, SKA2, and SKA3, has been found to be required for stable KT-MT interactions and timely anaphase onset. Depletion of either SKA1 or SKA2 by siRNA results in the loss of both proteins from the KT, but does not impact overall KT structure. Cells depleted of the SKA complex undergo a prolonged checkpoint-dependent delay in a metaphase-like state, indicating the importance of the SKA complex in the maintenance of the metaphase plate and spindle checkpoint silencing. SKA2 has also been shown to interact with glucocorticoid receptors and to be involved in glucocorticoid signaling and cell proliferation.

Synonyms:	SKA2 Antibody, FAM33A, FAM33A, Spindle and kinetochore-associated protein 2, Protein FAM33A
Host Species:	Rabbit
Clonality:	Polyclonal
Format:	IgG

Target Details

Gene Name:	SKA2
Reactivity:	Human, Mouse

Immunogen Type:	Conjugated Peptide
Immunogen:	Anti-SKA2 antibody was prepared from whole rabbit serum produced by repeated immunizations with a 15 amino acid synthetic peptide from near the N-terminus of human SKA2.
Purity/Specificity:	Anti-SKA2 Antibody was affinity purified from monospecific antiserum by immunoaffinity chromatography. Cross reactivity with SKA2 from other sources has not been determined.
Relevant Links:	<ul style="list-style-type: none">• UniProtKB - Q8WVK7• GenelD - 348235• NCBI - NP_872426

Application Details

Tested Applications:	ELISA, WB
Application Note:	Anti-SKA2 Antibody has been tested for use in ELISA and Western Blotting. Specific conditions for reactivity should be optimized by the end user. Expect a band at approximately 14 kDa in Western Blots of specific cell lysates and tissues.
Assay Dilutions:	All assays should be optimized by the user. Recommended dilutions (if any) may be listed below.
ELISA:	1:5,000 - 1:10,000
WB:	0.5-1 µg/mL

Formulation

Physical State:	Liquid (sterile filtered)
Concentration:	1 mg/mL by UV absorbance at 280 nm
Buffer:	0.01 M Sodium Phosphate, 0.25 M Sodium Chloride, pH 7.2
Preservative:	0.02% (w/v) Sodium Azide
Stabilizer:	None

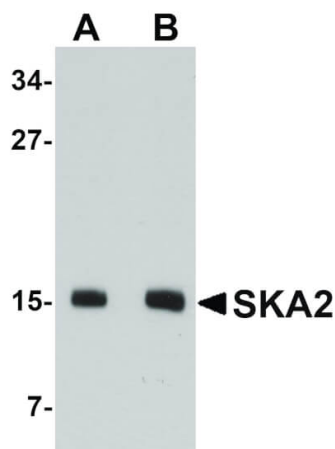
Shipping & Handling

Shipping Condition:	Dry Ice
----------------------------	---------

Storage Condition: Store vial at -20° C prior to opening. Aliquot contents and freeze at -20° C or below for extended storage. Avoid cycles of freezing and thawing. Centrifuge product if not completely clear after standing at room temperature. This product is stable for several weeks at 4° C as an undiluted liquid. Dilute only prior to immediate use.

Expiration: Expiration date is one (1) year from date of receipt.

Images



Western Blot

Western Blot of SKA2 antibody. Lane 1: 3T3 cell lysate with SKA2 antibody at 0.5 µg/mL. Lane 2: 3T3 cell lysate with SKA2 antibody at 1 µg/mL. Secondary antibody: Peroxidase rabbit secondary antibody at 1:10,000 for 45 min at RT. Block: 5% BLOTTO overnight at 4°C. Predicted/Observed size: 14 kDa, 15 kDa for SKA2. Other band(s): SKA2 splice variants and isoforms.

Disclaimer

This product is for research use only and is not intended for therapeutic or diagnostic applications. Please contact a technical service representative for more information. All products of animal origin manufactured by Rockland Immunochemicals are derived from starting materials of North American origin. Collection was performed in United States Department of Agriculture (USDA) inspected facilities and all materials have been inspected and certified to be free of disease and suitable for exportation. All properties listed are typical characteristics and are not specifications. All suggestions and data are offered in good faith but without guarantee as conditions and methods of use of our products are beyond our control. All claims must be made within 30 days following the date of delivery. The prospective user must determine the suitability of our materials before adopting them on a commercial scale. Suggested uses of our products are not recommendations to use our products in violation of any patent or as a license under any patent of Rockland Immunochemicals, Inc. If you require a commercial license to use this material and do not have one, then return this material, unopened to: Rockland Inc., P.O. BOX 5199, Limerick, Pennsylvania, USA.