

Datasheet for 600-401-EL7**SIRT2 Antibody****Overview**

Description:	Anti-SIRT2 (RABBIT) Antibody - 600-401-EL7
Item No.:	600-401-EL7
Size:	100 µg
Applications:	ELISA, IF, IHC, WB
Reactivity:	Human, Mouse, Rat
Host Species:	Rabbit

Product Details

Background:	Autophagy, the process of bulk degradation of cellular proteins through an autophagosomic-lysosomal pathway is important for normal growth control and may be defective in tumor cells. It is involved in the preservation of cellular nutrients under starvation conditions as well as the normal turnover of cytosolic components. This process is negatively regulated by TOR (Target of rapamycin) through phosphorylation of autophagy protein APG1. ATG16, another member of the autophagy protein family, forms a complex with the ATG5-ATG12 conjugate. This multimeric protein has been shown to be essential for autophagosome formation in both yeast and mammals and targets the ATG5-ATG12 complex to the autophagic isolation membrane during the formation of the autophagosome. Because mammalian ATG16 has seven WD-repeats in its C-terminal domain, it has been suggested that these may form a platform for further protein-protein interactions. Multiple isoforms of ATG16 are known to exist.
Synonyms:	SIRT2 Antibody, SIR2, SIR2L, SIR2L2, NAD-dependent protein deacetylase sirtuin-2, Regulatory protein SIR2 homolog 2
Host Species:	Rabbit
Clonality:	Polyclonal
Format:	IgG

Target Details

Gene Name:	SIRT2
Reactivity:	Human, Mouse, Rat

Immunogen Type:	Conjugated Peptide
Immunogen:	Anti-SIRT2 antibody was prepared from whole rabbit serum produced by repeated immunizations with a 17 amino acid synthetic peptide near the N-terminus of the human SIRT2.
Purity/Specificity:	Anti-SIRT2 Antibody was affinity purified from monospecific antiserum by immunoaffinity chromatography. Cross reactivity with SIRT2 from other sources has not been determined.
Relevant Links:	<ul style="list-style-type: none">• UniProtKB - Q8IXJ6• GenelD - 22933• NCBI - NP_036369

Application Details

Tested Applications:	ELISA, IF, IHC, WB
Application Note:	Anti-SIRT2 Antibody has been tested for use in ELISA, Western Blotting, Immunohistochemistry and Immunofluorescence. Specific conditions for reactivity should be optimized by the end user. Expect a band at approximately 43 kDa in Western Blots of specific cell lysates and tissues.
Assay Dilutions:	All assays should be optimized by the user. Recommended dilutions (if any) may be listed below.
ELISA:	1:25,000-1:100,000
IF:	20 µg/mL
IHC:	2.5 µg/mL
WB:	2.5-5 µg/mL

Formulation

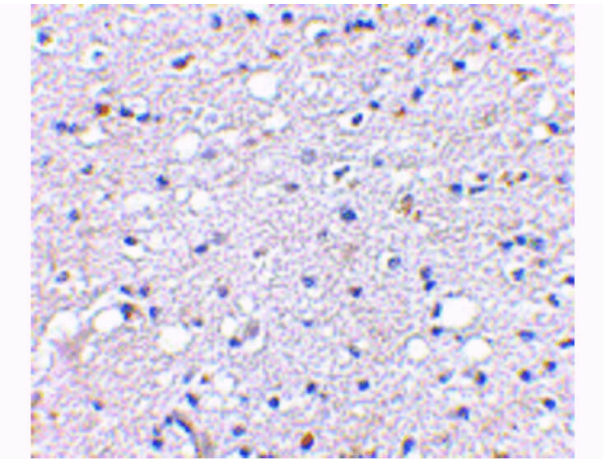
Physical State:	Liquid (sterile filtered)
Concentration:	1 mg/mL by UV absorbance at 280 nm
Buffer:	0.01 M Sodium Phosphate, 0.25 M Sodium Chloride, pH 7.2
Preservative:	0.02% (w/v) Sodium Azide
Stabilizer:	None

Shipping & Handling

Shipping Condition:	Dry Ice
----------------------------	---------

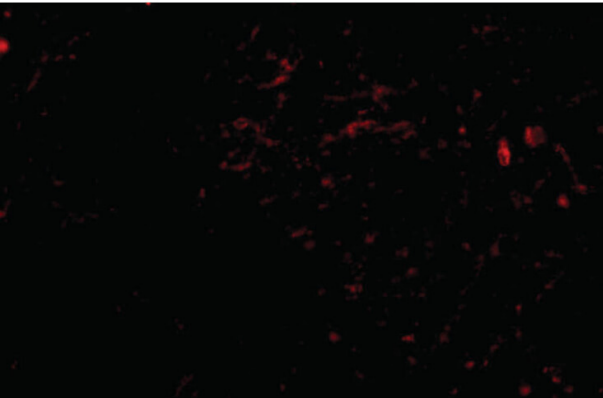
Storage Condition:	Store vial at -20° C prior to opening. Aliquot contents and freeze at -20° C or below for extended storage. Avoid cycles of freezing and thawing. Centrifuge product if not completely clear after standing at room temperature. This product is stable for several weeks at 4° C as an undiluted liquid. Dilute only prior to immediate use.
Expiration:	Expiration date is one (1) year from date of receipt.

Images



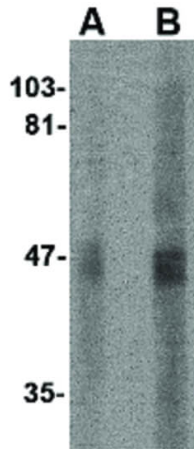
Immunohistochemistry

Immunohistochemistry of SIRT2 antibody. Tissue: Human brain tissue. Fixation: formalin fixed paraffin embedded. Antigen retrieval: not required. Primary antibody: SIRT2 antibody at 2.5 µg/mL for 1 h at RT. Secondary antibody: Peroxidase rabbit secondary antibody at 1:10,000 for 45 min at RT. Localization: SIRT2 is nuclear and occasionally cytoplasmic. Staining: SIRT2 as a precipitated red signal with hematoxylin purple nuclear counterstain.



Immunofluorescence Microscopy

Immunofluorescence Microscopy of SIRT2 antibody. Tissue: Human brain tissue. Fixation: 0.5% PFA. Antigen retrieval: not required. Primary antibody: SIRT2 antibody at 20 µg/mL for 1 h at RT. Secondary antibody: Fluorescein rabbit secondary antibody at 1:10,000 for 45 min at RT. Staining: SIRT2 as a red fluorescent signal.

**Western Blot**

Western Blot of SIRT2 antibody. Lane A: Human brain lysate at 2.5 $\mu\text{g}/\text{mL}$. Lane B: Human brain lysate at 5 $\mu\text{g}/\text{mL}$. Load: 35 μg per lane. Secondary antibody: Peroxidase rabbit secondary antibody at 1:10,000 for 45 min at RT. Block: 5% BLOTTO overnight at 4°C. Predicted/Observed size: 43.1 kDa, ~46 kDa for SIRT2.

Disclaimer

This product is for research use only and is not intended for therapeutic or diagnostic applications. Please contact a technical service representative for more information. All products of animal origin manufactured by Rockland Immunochemicals are derived from starting materials of North American origin. Collection was performed in United States Department of Agriculture (USDA) inspected facilities and all materials have been inspected and certified to be free of disease and suitable for exportation. All properties listed are typical characteristics and are not specifications. All suggestions and data are offered in good faith but without guarantee as conditions and methods of use of our products are beyond our control. All claims must be made within 30 days following the date of delivery. The prospective user must determine the suitability of our materials before adopting them on a commercial scale. Suggested uses of our products are not recommendations to use our products in violation of any patent or as a license under any patent of Rockland Immunochemicals, Inc. If you require a commercial license to use this material and do not have one, then return this material, unopened to: Rockland Inc., P.O. BOX 5199, Limerick, Pennsylvania, USA.