

**Datasheet for 600-401-EK4****SIK1 Antibody****Overview**

<b>Description:</b>	Anti-SIK1 (RABBIT) Antibody - 600-401-EK4
<b>Item No.:</b>	600-401-EK4
<b>Size:</b>	100 µg
<b>Applications:</b>	ELISA, IHC, WB
<b>Reactivity:</b>	Human
<b>Host Species:</b>	Rabbit

**Product Details**

<b>Background:</b>	Salt-inducible kinase 1 (SIK1), also known as SNF1LK or MSK, plays a role in histone modification and G2/M cell cycle regulation. It is a 783 amino acid protein that contains one UBA domain and belongs to the Ser/Thr protein kinase family (AMPK subfamily). Localized to both the nucleus and the cytoplasm, SIK1 is a class II HDAC kinase that uses magnesium as a cofactor to catalyze the ATP-dependent phosphorylation of target proteins and is thought to be important for the early stages of skeletal muscle growth and myocardial cell differentiation.
<b>Synonyms:</b>	SIK1 Antibody, MSK, SIK, SNF1LK, Salt-inducible kinase 1, SIK-1
<b>Host Species:</b>	Rabbit
<b>Clonality:</b>	Polyclonal
<b>Format:</b>	IgG

**Target Details**

<b>Gene Name:</b>	SIK1
<b>Reactivity:</b>	Human
<b>Immunogen Type:</b>	Conjugated Peptide
<b>Immunogen:</b>	Anti-SIK1 antibody was prepared from whole rabbit serum produced by repeated immunizations with an 18 amino acid synthetic peptide near the internal region of human SIK1.

**Purity/Specificity:** Anti-SIK1 Antibody was affinity purified from monospecific antiserum by immunoaffinity chromatography. Two isoforms of SIK1 are known to exist; this antibody will detect both isoforms. SIK1 antibody is predicted to not cross-react with other SIK protein family members.

**Relevant Links:**

- [UniProtKB - P57059](#)
- [GeneID - 150094](#)
- [NCBI - NP\\_775490](#)

## Application Details

**Tested Applications:** ELISA, IHC, WB

**Application Note:** Anti-SIK1 Antibody has been tested for use in ELISA, Western Blotting, and Immunohistochemistry. Specific conditions for reactivity should be optimized by the end user. Expect a band at approximately 85 kDa in Western Blots of specific cell lysates and tissues.

**Assay Dilutions:** All assays should be optimized by the user. Recommended dilutions (if any) may be listed below.

**ELISA:** 1:10,000

**IHC:** 5 µg/mL

**WB:** 1 µg/mL

## Formulation

**Physical State:** Liquid (sterile filtered)

**Concentration:** 1 mg/mL by UV absorbance at 280 nm

**Buffer:** 0.01 M Sodium Phosphate, 0.25 M Sodium Chloride, pH 7.2

**Preservative:** 0.02% (w/v) Sodium Azide

**Stabilizer:** None

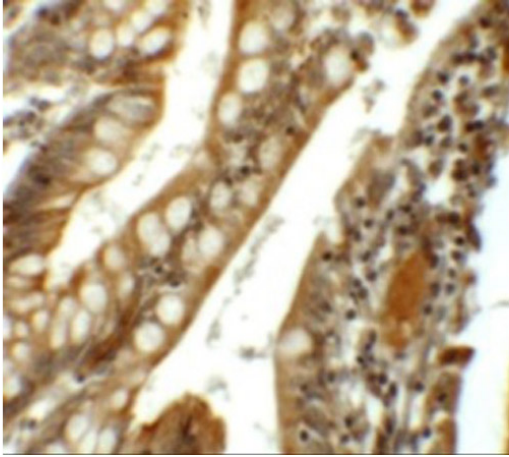
## Shipping & Handling

**Shipping Condition:** Dry Ice

**Storage Condition:** Store vial at -20° C prior to opening. Aliquot contents and freeze at -20° C or below for extended storage. Avoid cycles of freezing and thawing. Centrifuge product if not completely clear after standing at room temperature. This product is stable for several weeks at 4° C as an undiluted liquid. Dilute only prior to immediate use.

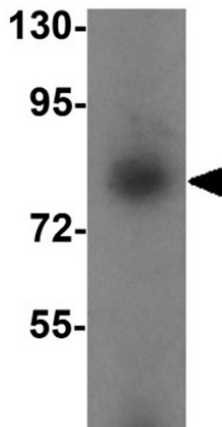
**Expiration:** Expiration date is one (1) year from date of receipt.

## Images



### Immunohistochemistry

Immunohistochemistry of SIK1.  
Tissue: human small intestine tissue.  
Primary Antibody: SIK1 antibody at 5 µg/mL.



### Western Blot

Western blot analysis of SIK1.  
Tissue: human small intestine tissue lysate.  
Primary Antibody: SIK1 antibody at 1 µg/mL.

## Disclaimer

This product is for research use only and is not intended for therapeutic or diagnostic applications. Please contact a technical service representative for more information. All products of animal origin manufactured by Rockland Immunochemicals are derived from starting materials of North American origin. Collection was performed in United States Department of Agriculture (USDA) inspected facilities and all materials have been inspected and certified to be free of disease and suitable for exportation. All properties listed are typical characteristics and are not specifications. All suggestions and data are offered in good faith but without guarantee as conditions and methods of use of our products are beyond our control. All claims must be made within 30 days following the date of delivery. The prospective user must determine the suitability of our materials before adopting them on a commercial scale. Suggested uses of our products are not recommendations to use our products in violation of any patent or as a license under any patent of Rockland Immunochemicals, Inc. If you require a commercial license to use this material and do not have one, then return this material, unopened to: Rockland Inc., P.O. BOX 5199, Limerick, Pennsylvania, USA.