

**Datasheet for 600-401-EJ3****SHISA9 Antibody****Overview**

<b>Description:</b>	Anti-SHISA9 (RABBIT) Antibody - 600-401-EJ3
<b>Item No.:</b>	600-401-EJ3
<b>Size:</b>	100 µg
<b>Applications:</b>	ELISA, IF, IHC, WB
<b>Reactivity:</b>	Human, Mouse, Rat
<b>Host Species:</b>	Rabbit

**Product Details**

<b>Background:</b>	Shisa proteins are a recently-identified family of modulators of both FGF and Wnt signaling that block both maturation and transport to the cell surface of their respective receptors. SHISA9, also known as CKAMP44a, is a brain-specific type I transmembrane protein that associates with AMPA receptors in synaptic spines and promotes AMPA receptor desensitization at excitatory synapses. It is thought to modulate short-term plasticity at specific excitatory synapses.
<b>Synonyms:</b>	SHISA9 Antibody, CKAMP44, Protein shisa-9
<b>Host Species:</b>	Rabbit
<b>Clonality:</b>	Polyclonal
<b>Format:</b>	IgG

**Target Details**

<b>Gene Name:</b>	SHISA9
<b>Reactivity:</b>	Human, Mouse, Rat
<b>Immunogen Type:</b>	Conjugated Peptide
<b>Immunogen:</b>	Anti-SHISA9 antibody was prepared from whole rabbit serum produced by repeated immunizations with a 22 amino acid synthetic peptide near the internal region of human SHISA9.
<b>Purity/Specificity:</b>	Anti-SHISA9 Antibody was affinity purified from monospecific antiserum by immunoaffinity chromatography. Cross reactivity with SHISA9 from other sources has not been determined.

<b>Relevant Links:</b>	<ul style="list-style-type: none"><li>• <a href="#">UniProtKB - B4DS77</a></li><li>• <a href="#">GeneID - 729993</a></li><li>• <a href="#">NCBI - NP_001138676</a></li></ul>
------------------------	--

## Application Details

<b>Tested Applications:</b>	ELISA, IF, IHC, WB
<b>Application Note:</b>	Anti-SHISA9 Antibody has been tested for use in ELISA, Western Blotting, Immunohistochemistry and Immunofluorescence. Specific conditions for reactivity should be optimized by the end user. Expect a band at approximately 47 kDa in Western Blots of specific cell lysates and tissues.
<b>Assay Dilutions:</b>	All assays should be optimized by the user. Recommended dilutions (if any) may be listed below.
<b>ELISA:</b>	1:10,000
<b>IF:</b>	20 µg/mL
<b>IHC:</b>	2.5 µg/mL
<b>WB:</b>	1 µg/mL

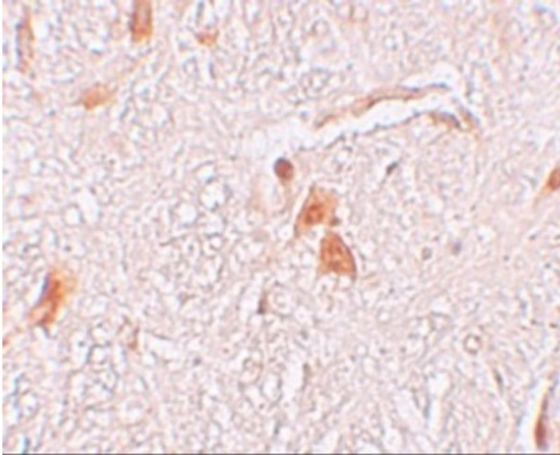
## Formulation

<b>Physical State:</b>	Liquid (sterile filtered)
<b>Concentration:</b>	1 mg/mL by UV absorbance at 280 nm
<b>Buffer:</b>	0.01 M Sodium Phosphate, 0.25 M Sodium Chloride, pH 7.2
<b>Preservative:</b>	0.02% (w/v) Sodium Azide
<b>Stabilizer:</b>	None

## Shipping & Handling

<b>Shipping Condition:</b>	Dry Ice
<b>Storage Condition:</b>	Store vial at -20° C prior to opening. Aliquot contents and freeze at -20° C or below for extended storage. Avoid cycles of freezing and thawing. Centrifuge product if not completely clear after standing at room temperature. This product is stable for several weeks at 4° C as an undiluted liquid. Dilute only prior to immediate use.
<b>Expiration:</b>	Expiration date is one (1) year from date of receipt.

## Images

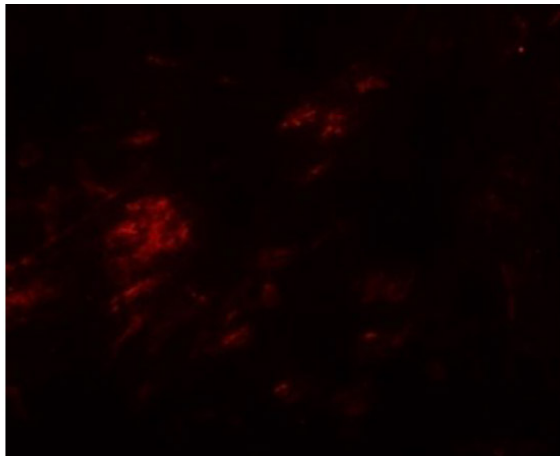


### Immunohistochemistry

Immunohistochemistry of SHISA9.

Tissue: human brain tissue.

Primary Antibody: Anti-SHISA9 antibody at 2.5 µg/mL.

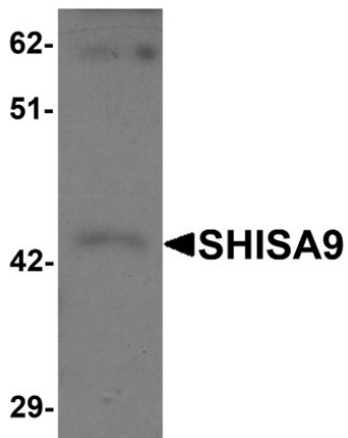


### Immunofluorescence Microscopy

Immunofluorescence of SHISA9.

Tissue: human brain tissue.

Primary Antibody: anti-SHISA9 antibody at 20 µg/mL.



### Western Blot

Western blot analysis of SHISA9.

Load: rat brain tissue lysate.

Primary Antibody: anti-SHISA9 antibody at 1 µg/mL.

## Disclaimer

This product is for research use only and is not intended for therapeutic or diagnostic applications. Please contact a technical service representative for more information. All products of animal origin manufactured by Rockland Immunochemicals are derived from starting materials of North American origin. Collection was performed in United States Department of Agriculture (USDA) inspected facilities and all materials have been inspected and certified to be free of disease and suitable for exportation. All properties listed are typical characteristics and are not specifications. All suggestions and data are offered in good faith but without guarantee as conditions and methods of use of our products are beyond our control. All claims must be made within 30 days following the date of delivery. The prospective user must determine the suitability of our materials before adopting them on a commercial scale. Suggested uses of our products are not recommendations to use our products in violation of any patent or as a license under any patent of Rockland Immunochemicals, Inc. If you require a commercial license to use this material and do not have one, then return this material, unopened to: Rockland Inc., P.O. BOX 5199, Limerick, Pennsylvania, USA.