

**Datasheet for 600-401-EH9****SHANK3 Antibody****Overview**

<b>Description:</b>	Anti-SHANK3 (RABBIT) Antibody - 600-401-EH9
<b>Item No.:</b>	600-401-EH9
<b>Size:</b>	100 µg
<b>Applications:</b>	ELISA, IF, IHC, WB
<b>Reactivity:</b>	Human, Mouse
<b>Host Species:</b>	Rabbit

**Product Details**

<b>Background:</b>	SH3 and multiple ankyrin repeat domains 3 (SHANK3), a member of the Shank gene family, plays a role in synapse formation and dendritic spine maturation. Shank proteins (Shank 1-3) containing PDZ domains are scaffold proteins of the postsynaptic density (PSD) that connect neurotransmitter receptors and ion channels proteins to the actin cytoskeleton and G-protein-coupled signaling pathways. Transcript splice variation in the Shank family influences the spectrum of Shank-interacting proteins in the PSDs of adult and developing brain to ensure normal development. Mutations of SHANK3 are a cause of autism spectrum disorder (ASD) and the neurological symptoms of 22q13.3 deletion syndrome.
<b>Synonyms:</b>	SHANK3 Antibody, PSAP2, SCZD15, PROSAP2, SPANK-2, DEL22q13.3, KIAA1650, PSAP2, SH3 and multiple ankyrin repeat domains protein 3, Proline-rich synapse-associated protein 2, Shank3
<b>Host Species:</b>	Rabbit
<b>Clonality:</b>	Polyclonal
<b>Format:</b>	IgG

**Target Details**

<b>Gene Name:</b>	SHANK3
<b>Reactivity:</b>	Human, Mouse
<b>Immunogen Type:</b>	Conjugated Peptide

<b>Immunogen:</b>	Anti-SHANK3 antibody was prepared from whole rabbit serum produced by repeated immunizations with a 19 amino acid synthetic peptide near the internal region of human SHANK3.
<b>Purity/Specificity:</b>	Anti-SHANK3 Antibody was affinity purified from monospecific antiserum by immunoaffinity chromatography. At least three alternatively spliced transcript isoforms of SHANK3 are known to exist.
<b>Relevant Links:</b>	<ul style="list-style-type: none"><li>• <a href="#">UniProtKB - Q9BYB0</a></li><li>• <a href="#">GeneID - 85358</a></li><li>• <a href="#">NCBI - NP_001073889</a></li></ul>

## Application Details

<b>Tested Applications:</b>	ELISA, IF, IHC, WB
<b>Application Note:</b>	Anti-SHANK3 Antibody has been tested for use in ELISA, Western Blotting, Immunohistochemistry and Immunofluorescence. Specific conditions for reactivity should be optimized by the end user. Expect a band at approximately 185 kDa in Western Blots of specific cell lysates and tissues.
<b>Assay Dilutions:</b>	All assays should be optimized by the user. Recommended dilutions (if any) may be listed below.
<b>ELISA:</b>	1:10,000
<b>IF:</b>	2.5 µg/mL
<b>IHC:</b>	2.5 µg/mL
<b>WB:</b>	1 µg/mL

## Formulation

<b>Physical State:</b>	Liquid (sterile filtered)
<b>Concentration:</b>	1 mg/mL by UV absorbance at 280 nm
<b>Buffer:</b>	0.01 M Sodium Phosphate, 0.25 M Sodium Chloride, pH 7.2
<b>Preservative:</b>	0.02% (w/v) Sodium Azide
<b>Stabilizer:</b>	None

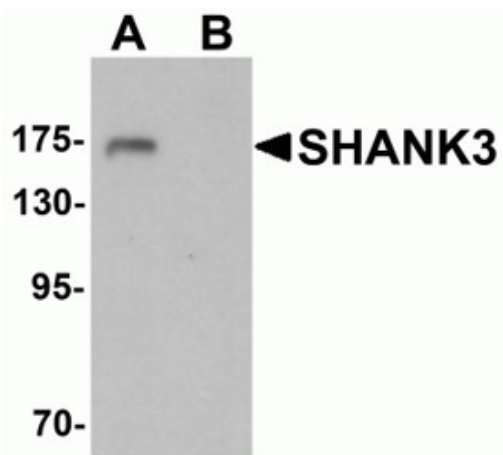
## Shipping & Handling

<b>Shipping Condition:</b>	Dry Ice
----------------------------	---------

**Storage Condition:** Store vial at -20° C prior to opening. Aliquot contents and freeze at -20° C or below for extended storage. Avoid cycles of freezing and thawing. Centrifuge product if not completely clear after standing at room temperature. This product is stable for several weeks at 4° C as an undiluted liquid. Dilute only prior to immediate use.

**Expiration:** Expiration date is one (1) year from date of receipt.

## Images

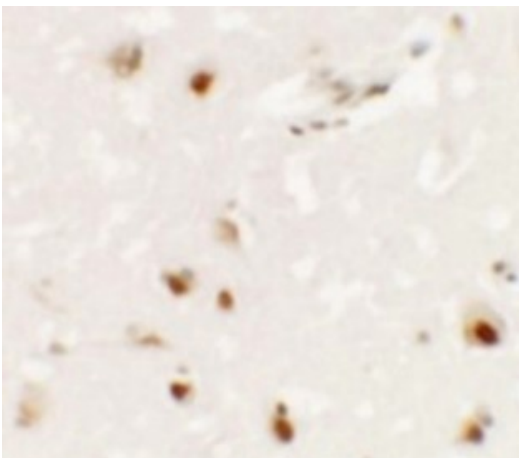


### Western Blot

Western blot analysis of SHANK3.

Load: 3T3 cell lysate.

Primary Antibody: SHANK3 antibody at 1 µg/ml in (A) the absence and (B) the presence of blocking peptide.

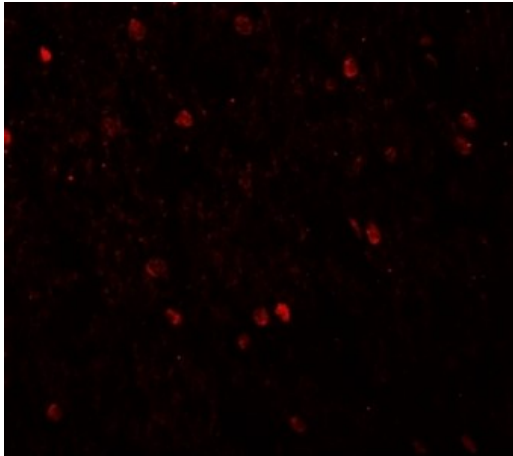


### Immunohistochemistry

Immunohistochemistry of SHANK3.

Tissue: human brain tissue.

Primary Antibody: SHANK3 antibody at 2.5 µg/mL.

**Immunofluorescence Microscopy**

Immunofluorescence of SHANK3.

Tissue: human brain tissue.

Primary Antibody: SHANK3 antibody at 20 µg/mL.

**Disclaimer**

This product is for research use only and is not intended for therapeutic or diagnostic applications. Please contact a technical service representative for more information. All products of animal origin manufactured by Rockland Immunochemicals are derived from starting materials of North American origin. Collection was performed in United States Department of Agriculture (USDA) inspected facilities and all materials have been inspected and certified to be free of disease and suitable for exportation. All properties listed are typical characteristics and are not specifications. All suggestions and data are offered in good faith but without guarantee as conditions and methods of use of our products are beyond our control. All claims must be made within 30 days following the date of delivery. The prospective user must determine the suitability of our materials before adopting them on a commercial scale. Suggested uses of our products are not recommendations to use our products in violation of any patent or as a license under any patent of Rockland Immunochemicals, Inc. If you require a commercial license to use this material and do not have one, then return this material, unopened to: Rockland Inc., P.O. BOX 5199, Limerick, Pennsylvania, USA.