

## Datasheet for 600-401-EH6

# SGSM3 Antibody

### Overview

<b>Description:</b>	Anti-SGSM3 (RABBIT) Antibody - 600-401-EH6
<b>Item No.:</b>	600-401-EH6
<b>Size:</b>	100 µg
<b>Applications:</b>	ELISA, IF, WB
<b>Reactivity:</b>	Human
<b>Host Species:</b>	Rabbit

### Product Details

<b>Background:</b>	Small G proteins such as RAP and RAB proteins are the key molecules in intracellular signal transduction and vesicle transportation. A novel protein family small G protein signaling modulator (SGSM) consisting of three members SGSM1-3 bind to RAP and RAB family proteins. All three SGSM proteins possess both a RUN domain and a TBC domain. Little is known of the exact function of SGSM3.
<b>Synonyms:</b>	SGSM3 Antibody, MAP, RUSC3, RUTBC3, RABGAP5, RabGAP-5, MAP, RABGAPLP, Small G protein signaling modulator 3, Merlin-associated protein, RabGAPLP
<b>Host Species:</b>	Rabbit
<b>Clonality:</b>	Polyclonal
<b>Format:</b>	IgG

### Target Details

<b>Gene Name:</b>	SGSM3
<b>Reactivity:</b>	Human
<b>Immunogen Type:</b>	Conjugated Peptide
<b>Immunogen:</b>	Anti-SGSM3 antibody was prepared from whole rabbit serum produced by repeated immunizations with an 18 amino acid synthetic peptide near the N-terminus of human SGSM3.

**Purity/Specificity:** Anti-SGSM3 Antibody was affinity purified from monospecific antiserum by immunoaffinity chromatography. Multiple isoforms of SGSM3 are known to exist. SGSM3 antibody is predicted to not cross react with other SGSM family proteins.

**Relevant Links:**

- [UniProtKB - Q96HU1](#)
- [GeneID - 27352](#)
- [NCBI - CAQ08933](#)

## Application Details

**Tested Applications:** ELISA, IF, WB

**Application Note:** Anti-SGSM3 Antibody has been tested for use in ELISA, Western Blotting and Immunofluorescence. Specific conditions for reactivity should be optimized by the end user. Expect a band at approximately 85 kDa in Western Blots of specific cell lysates and tissues.

**Assay Dilutions:** All assays should be optimized by the user. Recommended dilutions (if any) may be listed below.

**ELISA:** 1:10,000

**IF:** 20 µg/mL

**WB:** 1 µg/mL

## Formulation

**Physical State:** Liquid (sterile filtered)

**Concentration:** 1 mg/mL by UV absorbance at 280 nm

**Buffer:** 0.01 M Sodium Phosphate, 0.25 M Sodium Chloride, pH 7.2

**Preservative:** 0.02% (w/v) Sodium Azide

**Stabilizer:** None

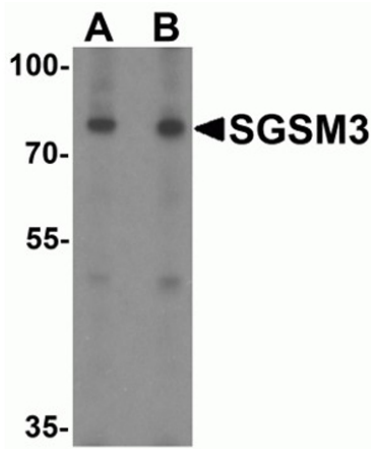
## Shipping & Handling

**Shipping Condition:** Dry Ice

**Storage Condition:** Store vial at -20° C prior to opening. Aliquot contents and freeze at -20° C or below for extended storage. Avoid cycles of freezing and thawing. Centrifuge product if not completely clear after standing at room temperature. This product is stable for several weeks at 4° C as an undiluted liquid. Dilute only prior to immediate use.

**Expiration:** Expiration date is one (1) year from date of receipt.

## Images

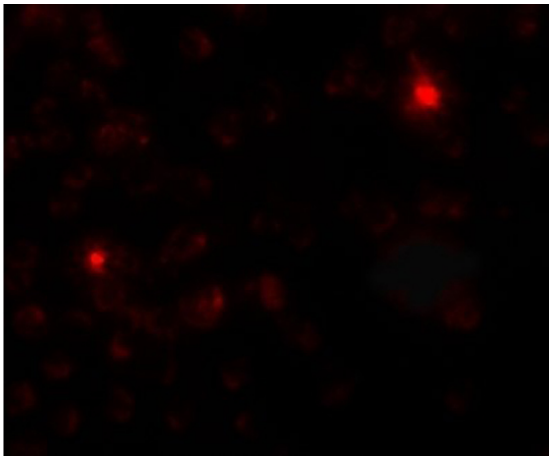


### Western Blot

Western blot analysis of SGSM3.

Load: 293 cell lysate.

Primary Antibody: SGSM3 antibody at (A) 1 and (B) 2  $\mu\text{g}/\text{mL}$ .



### Immunofluorescence Microscopy

Immunofluorescence of SGSM3.

Tissue: 293 cells.

Primary Antibody: SGSM3 antibody at 20  $\mu\text{g}/\text{mL}$ .

## Disclaimer

This product is for research use only and is not intended for therapeutic or diagnostic applications. Please contact a technical service representative for more information. All products of animal origin manufactured by Rockland Immunochemicals are derived from starting materials of North American origin. Collection was performed in United States Department of Agriculture (USDA) inspected facilities and all materials have been inspected and certified to be free of disease and suitable for exportation. All properties listed are typical characteristics and are not specifications. All suggestions and data are offered in good faith but without guarantee as conditions and methods of use of our products are beyond our control. All claims must be made within 30 days following the date of delivery. The prospective user must determine the suitability of our materials before adopting them on a commercial scale. Suggested uses of our products are not recommendations to use our products in violation of any patent or as a license under any patent of Rockland Immunochemicals, Inc. If you require a commercial license to use this material and do not have one, then return this material, unopened to: Rockland Inc., P.O. BOX 5199, Limerick, Pennsylvania, USA.