

Datasheet for 600-401-EF2

SCUBE3 Antibody

Overview

Description:	Anti-SCUBE3 (RABBIT) Antibody - 600-401-EF2
Item No.:	600-401-EF2
Size:	100 µg
Applications:	ELISA, IF, WB
Reactivity:	Human, Mouse
Host Species:	Rabbit

Product Details

Background:	SCUBE3 is a member of a family of secreted glycoproteins that contain N-terminal EGF-like repeats and C-terminal cysteine-rich motifs and CUB domain and is highly expressed in primary osteoblasts and bones, and to a lesser extent in heart. Other studies have shown that overexpression of SCUBE3 in mice induced cardiac hypertrophy, suggesting that it may also play a role in the regulation of cardiac growth.. SCUBE3 has been shown to be an endogenous TGF- β receptor ligand and is thought to promote lung cancer cell mobility and invasiveness. In lung cancer cells, the secreted SCUBE3 protein was cleaved by MMP2 and MMP9, allowing the activation of the TGF- β receptor, the increase of Smad2/3 transcriptional activity and the upregulation of expression of proteins such as TGF- β 1, VEGF, Snail, and Slug.
Synonyms:	SCUBE3 Antibody, CEGF3, CEGF3, Signal peptide, CUB and EGF-like domain-containing protein 3
Host Species:	Rabbit
Clonality:	Polyclonal
Format:	IgG

Target Details

Gene Name:	SCUBE3
Reactivity:	Human, Mouse
Immunogen Type:	Conjugated Peptide

Immunogen:	Anti-SCUBE3 antibody was prepared from whole rabbit serum produced by repeated immunizations with a 15 amino acid synthetic peptide near the internal region of human SCUBE3.
Purity/Specificity:	Anti-SCUBE3 Antibody was affinity purified from monospecific antiserum by immunoaffinity chromatography. At least two isoforms of SCUBE3 are known to exist. SCUBE3 antibody is predicted to not cross-react with other SCUBE members.
Relevant Links:	<ul style="list-style-type: none">• UniProtKB - Q8IX30• GeneID - 222663• NCBI - NP_689966

Application Details

Tested Applications:	ELISA, IF, WB
Application Note:	Anti-SCUBE3 Antibody has been tested for use in ELISA, Western Blotting and Immunofluorescence. Specific conditions for reactivity should be optimized by the end user. Expect a band at approximately 109 kDa in Western Blots of specific cell lysates and tissues.
Assay Dilutions:	All assays should be optimized by the user. Recommended dilutions (if any) may be listed below.
ELISA:	1:10,000 - 1:20,000
IF:	20 µg/mL
WB:	1-2 µg/mL

Formulation

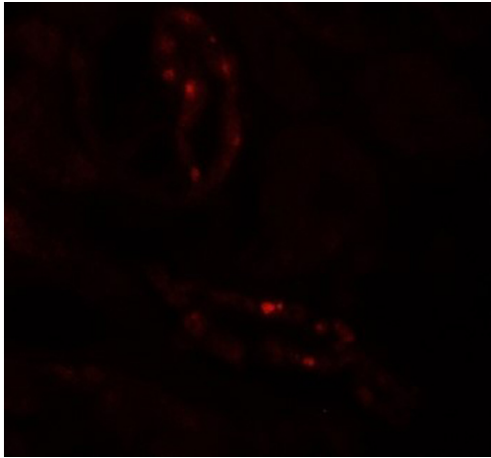
Physical State:	Liquid (sterile filtered)
Concentration:	1 mg/mL by UV absorbance at 280 nm
Buffer:	0.01 M Sodium Phosphate, 0.25 M Sodium Chloride, pH 7.2
Preservative:	0.02% (w/v) Sodium Azide
Stabilizer:	None

Shipping & Handling

Shipping Condition:	Wet Ice
Storage Condition:	Antibody can be stored at 4°C up to one year. Antibodies should not be exposed to prolonged high temperatures.

Expiration: Expiration date is one (1) year from date of receipt.

Images

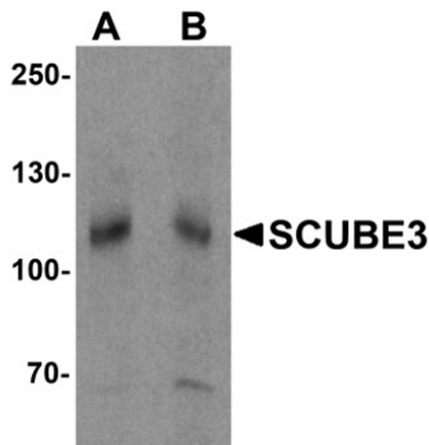


Immunofluorescence Microscopy

Immunofluorescence of SCUBE3.

Tissue: human kidney tissue.

Primary Antibody: SCUBE3 antibody at 20 µg/mL.



Western Blot

Western blot analysis of SCUBE3.

Load: mouse kidney tissue lysate.

Primary Antibody: SCUBE3 antibody at (A) 1 and (B) 2 µg/mL.

Disclaimer

This product is for research use only and is not intended for therapeutic or diagnostic applications. Please contact a technical service representative for more information. All products of animal origin manufactured by Rockland Immunochemicals are derived from starting materials of North American origin. Collection was performed in United States Department of Agriculture (USDA) inspected facilities and all materials have been inspected and certified to be free of disease and suitable for exportation. All properties listed are typical characteristics and are not specifications. All suggestions and data are offered in good faith but without guarantee as conditions and methods of use of our products are beyond our control. All claims must be made within 30 days following the date of delivery. The prospective user must determine the suitability of our materials before adopting them on a commercial scale. Suggested uses of our products are not recommendations to use our products in violation of any patent or as a license under any patent of Rockland Immunochemicals, Inc. If you require a commercial license to use this material and do not have one, then return this material, unopened to: Rockland Inc., P.O. BOX 5199, Limerick, Pennsylvania, USA.