

**Datasheet for 600-401-EE7****SCRN2 Antibody****Overview**

<b>Description:</b>	Anti-SCRN2 (RABBIT) Antibody - 600-401-EE7
<b>Item No.:</b>	600-401-EE7
<b>Size:</b>	100 µg
<b>Applications:</b>	ELISA, IF, IHC, WB
<b>Reactivity:</b>	Human, Mouse, Rat
<b>Host Species:</b>	Rabbit

**Product Details**

<b>Background:</b>	SCRN2 is a member of the secernin family of proteins which includes the homologous SCRN1, a protein that was first identified as being involved in the regulation of exocytosis from peritoneal mast cells. Little is known of SCRN2, but studies have shown that SCRN1 may possess epitopes that function as tumor-associated antigens in gastric cancers and increased SCRN1 expression in patients with colorectal cancer correlated with poor prognosis, suggesting that SCRN2 may also be involved in protein secretion or the regulation of cell growth.
<b>Synonyms:</b>	SCRN2 Antibody, Ses2, Secernin-2
<b>Host Species:</b>	Rabbit
<b>Clonality:</b>	Polyclonal
<b>Format:</b>	IgG

**Target Details**

<b>Gene Name:</b>	SCRN2
<b>Reactivity:</b>	Human, Mouse, Rat
<b>Immunogen Type:</b>	Conjugated Peptide
<b>Immunogen:</b>	Anti-SCRN2 antibody was prepared from whole rabbit serum produced by repeated immunizations with an 18 amino acid synthetic peptide near the C-terminus of human SCRN2.
<b>Purity/Specificity:</b>	Anti-SCRN2 Antibody was affinity purified from monospecific antiserum by immunoaffinity chromatography. Cross reactivity with SCRN2 from other sources has not been determined.

<b>Relevant Links:</b>	<ul style="list-style-type: none"><li>• <a href="#">UniProtKB - Q96FV2</a></li><li>• <a href="#">GeneID - 90507</a></li><li>• <a href="#">NCBI - EAW94970</a></li></ul>
------------------------	---

## Application Details

<b>Tested Applications:</b>	ELISA, IF, IHC, WB
<b>Application Note:</b>	Anti-SCRN2 Antibody has been tested for use in ELISA, Western Blotting, Immunocytochemistry and Immunofluorescence. Specific conditions for reactivity should be optimized by the end user. Expect a band at approximately 47 kDa in Western Blots of specific cell lysates and tissues.
<b>Assay Dilutions:</b>	All assays should be optimized by the user. Recommended dilutions (if any) may be listed below.
<b>ELISA:</b>	1:5,000 - 1:10,000
<b>IF:</b>	20 µg/mL
<b>WB:</b>	.5-1 µg/mL

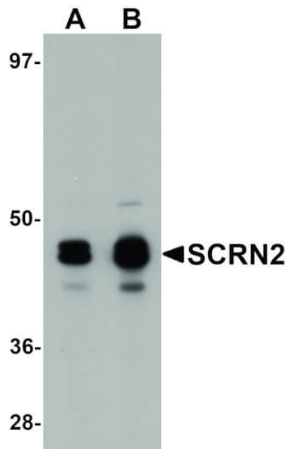
## Formulation

<b>Physical State:</b>	Liquid (sterile filtered)
<b>Concentration:</b>	1 mg/mL by UV absorbance at 280 nm
<b>Buffer:</b>	0.01 M Sodium Phosphate, 0.25 M Sodium Chloride, pH 7.2
<b>Preservative:</b>	0.02% (w/v) Sodium Azide
<b>Stabilizer:</b>	None

## Shipping & Handling

<b>Shipping Condition:</b>	Dry Ice
<b>Storage Condition:</b>	Store vial at -20° C prior to opening. Aliquot contents and freeze at -20° C or below for extended storage. Avoid cycles of freezing and thawing. Centrifuge product if not completely clear after standing at room temperature. This product is stable for several weeks at 4° C as an undiluted liquid. Dilute only prior to immediate use.
<b>Expiration:</b>	Expiration date is one (1) year from date of receipt.

## Images

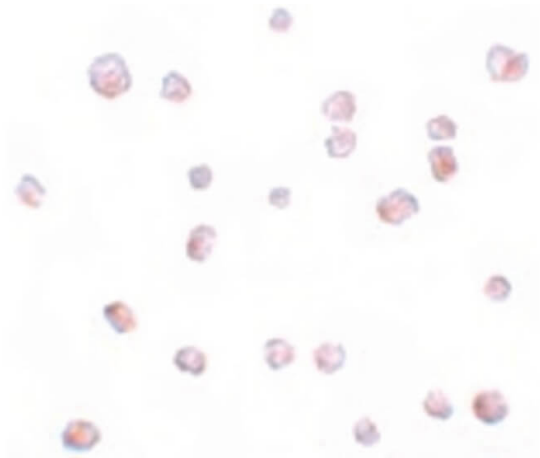


#### Western Blot

Western Blot of SCR2 antibody. Lane 1: 293 cell tissue lysate with SCR2 antibody at 0.5  $\mu\text{g}/\text{mL}$ . Lane 2: 293 cell tissue lysate with SCR2 antibody at 1  $\mu\text{g}/\text{mL}$ . Secondary antibody: Peroxidase rabbit secondary antibody at 1:10,000 for 45 min at RT. Block: 5% BLOTTO overnight at 4°C. Predicted/Observed size: 47 kDa, 47 kDa for SCR2. Other band(s): SCR2 splice variants and isoforms.

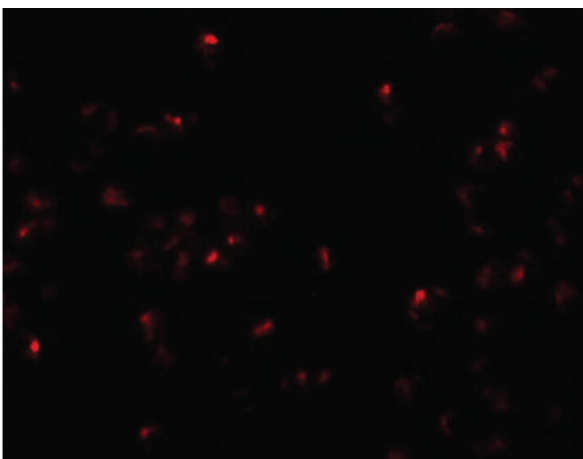
#### Immunohistochemistry

Immunocytochemistry of SCR2 antibody. Tissue: 293 cells. Fixation: formalin fixed paraffin embedded. Antigen retrieval: not required. Primary antibody: SCR2 antibody at 20  $\mu\text{g}/\text{mL}$  for 1 h at RT. Secondary antibody: Peroxidase rabbit secondary antibody at 1:10,000 for 45 min at RT. Localization: SCR2 is localized in the extracellular exosome. Staining: SCR2 as precipitated blue signal with pink nuclear counterstain.



#### Immunofluorescence Microscopy

Immunofluorescence Microscopy of SCR2 antibody. Tissue: 293 cells. Fixation: 0.5% PFA. Antigen retrieval: not required. Primary antibody: SCR2 antibody at 20  $\mu\text{g}/\text{mL}$  for 1 h at RT. Secondary antibody: Fluorescein rabbit secondary antibody at 1:10,000 for 45 min at RT. Localization: SCR2 is localized in the extracellular exosome. Staining: SCR2 as red fluorescent signal.



#### Disclaimer

This product is for research use only and is not intended for therapeutic or diagnostic applications. Please contact a technical service representative for more information. All products of animal origin manufactured by Rockland Immunochemicals are derived from starting materials of North American origin. Collection was performed in United States Department of Agriculture (USDA) inspected facilities and all materials have been inspected and certified to be free of disease and suitable for exportation. All properties listed are typical characteristics and are not specifications. All suggestions and data are offered in good faith but without guarantee as conditions and methods of use of our products are beyond our control. All claims must be made within 30 days following the date of delivery. The prospective user must determine the suitability of our materials before adopting them on a commercial scale. Suggested uses of our products are not recommendations to use our products in violation of any patent or as a license under any patent of Rockland Immunochemicals, Inc. If you require a commercial license to use this material and do not have one, then return this material, unopened to: Rockland Inc., P.O. BOX 5199, Limerick, Pennsylvania, USA.