

Datasheet for 600-401-ED8**SAMSN Antibody****Overview**

Description:	Anti-SAMSN (RABBIT) Antibody - 600-401-ED8
Item No.:	600-401-ED8
Size:	100 µg
Applications:	ELISA, IF, IHC, WB
Reactivity:	Human
Host Species:	Rabbit

Product Details

Background:	SAMSN (HACS1) is a member of a novel gene family of putative adaptors and scaffold proteins containing SH3 and SAM (sterile alpha motif) domains. It encodes a 441 amino acid protein that is differentially expressed in hematopoietic cells and malignancies including myeloid leukemia, lymphoma, and myeloma. SAMSN has restricted expression in human tissues. It has been shown to be up-regulated by B cell activation signals and is a participant in B cell activation and differentiation. SAMSN is an immunoinhibitory adaptor that might be a useful target for immune suppression therapy.
Synonyms:	SAMSN Antibody, SLy2, HACS1, NASH1, SASH2, SH3D6B, SAM domain-containing protein SAMSN-1, Hematopoietic adaptor containing SH3 and SAM domains 1
Host Species:	Rabbit
Clonality:	Polyclonal
Format:	IgG

Target Details

Gene Name:	SAMSN1
Reactivity:	Human
Immunogen Type:	Conjugated Peptide
Immunogen:	Anti- SAMSN antibody was prepared from whole rabbit serum produced by repeated immunizations with an 18 amino acid peptide near the C-terminus of human SAMSN.

Purity/Specificity: Anti-SAMSN Antibody was affinity purified from monospecific antiserum by immunoaffinity chromatography. At least two isoforms of SAMSN are known to exist.

Relevant Links:

- [UniProtKB - Q9NSI8](#)
- [GeneID - 64092](#)
- [NCBI - NP_071419](#)

Application Details

Tested Applications: ELISA, IF, IHC, WB

Application Note: Anti-SAMSN Antibody has been tested for use in ELISA, Western Blotting, Immunocytochemistry and Immunofluorescence. Specific conditions for reactivity should be optimized by the end user. Expect a band at approximately 42 kDa in Western Blots of specific cell lysates and tissues.

Assay Dilutions: All assays should be optimized by the user. Recommended dilutions (if any) may be listed below.

ELISA: 1:10,000 - 1:20,000

IF: User Optimized

IHC: User Optimized

WB: 1-2 µg/mL

Formulation

Physical State: Liquid (sterile filtered)

Concentration: 1 mg/mL by UV absorbance at 280 nm

Buffer: 0.01 M Sodium Phosphate, 0.25 M Sodium Chloride, pH 7.2

Preservative: 0.02% (w/v) Sodium Azide

Stabilizer: None

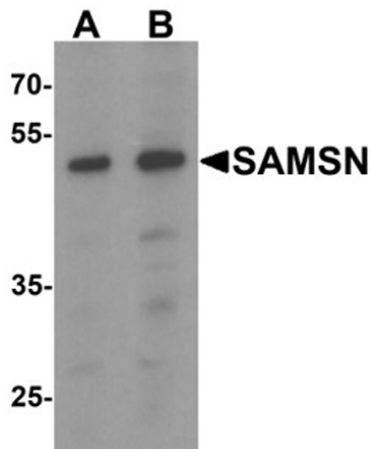
Shipping & Handling

Shipping Condition: Dry Ice

Storage Condition: Store vial at -20° C prior to opening. Aliquot contents and freeze at -20° C or below for extended storage. Avoid cycles of freezing and thawing. Centrifuge product if not completely clear after standing at room temperature. This product is stable for several weeks at 4° C as an undiluted liquid. Dilute only prior to immediate use.

Expiration: Expiration date is one (1) year from date of receipt.

Images

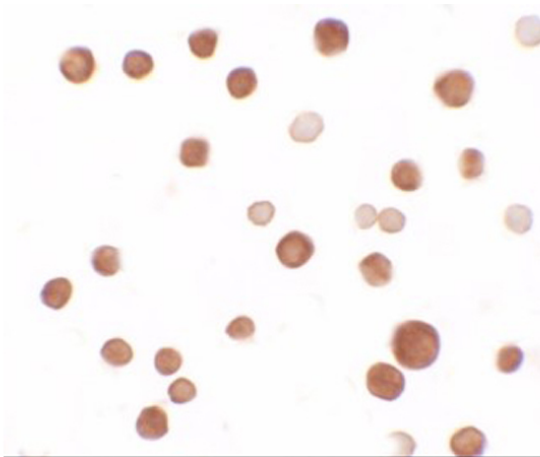


Western Blot

Western blot analysis of SAMSN.

Load: HeLa cell lysate.

Primary Antibody: SAMSN antibody at (A) 0.5 and (B) 1 $\mu\text{g}/\text{mL}$.

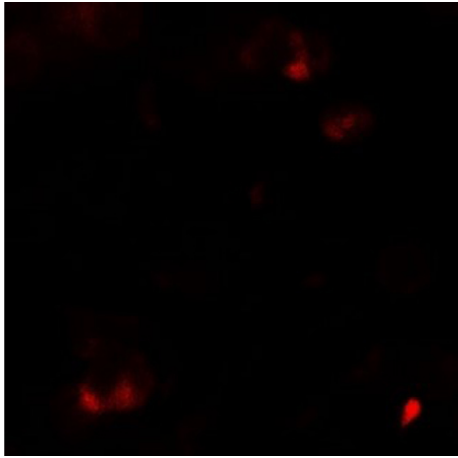


Immunocytochemistry

Immunocytochemistry of SAMSN.

Tissue: HeLa cells.

Primary Antibody: SAMSN antibody at 2.5 $\mu\text{g}/\text{ml}$.

**Immunofluorescence Microscopy**

Immunofluorescence of SAMSN.

Tissue: HeLa cells.

Primary Antibody: SAMSN antibody at 5 µg/ml.

Disclaimer

This product is for research use only and is not intended for therapeutic or diagnostic applications. Please contact a technical service representative for more information. All products of animal origin manufactured by Rockland Immunochemicals are derived from starting materials of North American origin. Collection was performed in United States Department of Agriculture (USDA) inspected facilities and all materials have been inspected and certified to be free of disease and suitable for exportation. All properties listed are typical characteristics and are not specifications. All suggestions and data are offered in good faith but without guarantee as conditions and methods of use of our products are beyond our control. All claims must be made within 30 days following the date of delivery. The prospective user must determine the suitability of our materials before adopting them on a commercial scale. Suggested uses of our products are not recommendations to use our products in violation of any patent or as a license under any patent of Rockland Immunochemicals, Inc. If you require a commercial license to use this material and do not have one, then return this material, unopened to: Rockland Inc., P.O. BOX 5199, Limerick, Pennsylvania, USA.