

Datasheet for 600-401-ED4

RWDD3 Antibody

Overview

Description:	Anti-RWDD3 (RABBIT) Antibody - 600-401-ED4
Item No.:	600-401-ED4
Size:	100 µg
Applications:	ELISA, WB
Reactivity:	Human, Mouse, Rat
Host Species:	Rabbit

Product Details

Background:	RWDD3 (RSUME), a small RWD-containing protein, has a central role in sumoylation by enhancing SUMO conjugation in the regulatory network of immune-inflammatory signals. RWDD3 increases IκBα sumoylation and stability. In addition, RWDD3 inhibits TNF-α-induced kappaB-LUC (Luciferase) reporter activity, showing the functional consequence of IκBα increased stability. RSUME-enhanced sumoylation of IκBα leads to the inhibition of NF-κB activity on two well-known inflammatory genes, IL-8 and cyclooxygenase-2 (Cox-2) and therefore may also favor anti-inflammatory pathways. Expression of RWDD3 was induced under hypoxic conditions and it has a potential role during vascularization. Both BMP-4 and RWDD3 may be interesting targets for inhibiting steps involved in pituitary tumorigenesis.
Synonyms:	RWDD3 Antibody, RSUME, RSUME, RWD domain-containing protein 3, RWD-containing sumoylation enhancer
Host Species:	Rabbit
Clonality:	Polyclonal
Format:	IgG

Target Details

Gene Name:	RWDD3
Reactivity:	Human, Mouse, Rat
Immunogen Type:	Conjugated Peptide

Immunogen:	Anti-RWDD3 antibody was prepared from whole rabbit serum produced by repeated immunizations with a 17 amino acid synthetic peptide from near the N-terminus of human RWDD3.
Purity/Specificity:	Anti-RWDD3 Antibody was affinity purified from monospecific antiserum by immunoaffinity chromatography. Cross reactivity with RWDD3 from other sources has not been determined.
Relevant Links:	<ul style="list-style-type: none">• UniProtKB - Q9Y3V2• GeneID - 25950• NCBI - NP_056300

Application Details

Tested Applications:	ELISA, WB
Application Note:	Anti-RWDD3 Antibody has been tested for use in ELISA and Western Blotting. Specific conditions for reactivity should be optimized by the end user. Expect a band at approximately 30 kDa in Western Blots of specific cell lysates and tissues.
Assay Dilutions:	All assays should be optimized by the user. Recommended dilutions (if any) may be listed below.
ELISA:	1:5,000
WB:	0.5 µg/mL

Formulation

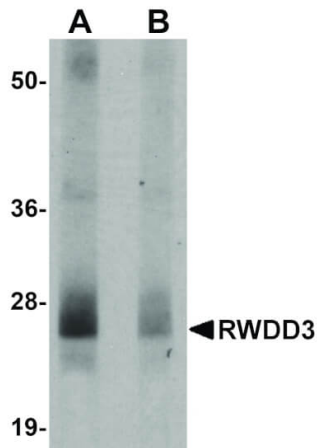
Physical State:	Liquid (sterile filtered)
Concentration:	1 mg/mL by UV absorbance at 280 nm
Buffer:	0.01 M Sodium Phosphate, 0.25 M Sodium Chloride, pH 7.2
Preservative:	0.02% (w/v) Sodium Azide
Stabilizer:	None

Shipping & Handling

Shipping Condition:	Dry Ice
Storage Condition:	Store vial at -20° C prior to opening. Aliquot contents and freeze at -20° C or below for extended storage. Avoid cycles of freezing and thawing. Centrifuge product if not completely clear after standing at room temperature. This product is stable for several weeks at 4° C as an undiluted liquid. Dilute only prior to immediate use.

Expiration: Expiration date is one (1) year from date of receipt.

Images



Western Blot

Western Blot of RWDD3 antibody. Lane 1: mouse kidney tissue lysate in the absence of blocking peptide. Lane 2: mouse kidney tissue lysate in the presence of blocking peptide. Primary Antibody: with RWDD3 antibody at 0.5 µg/mL. Secondary antibody: Goat Anti-Rabbit HRP 611-103-122 at 1:10,000 for 45 min at RT. Block: 5% BLOTTO overnight at 4°C. Predicted/Observed size: 30 kDa, 34 kDa for RWDD3. Other band(s): RWDD3 splice variants and isoforms.

Disclaimer

This product is for research use only and is not intended for therapeutic or diagnostic applications. Please contact a technical service representative for more information. All products of animal origin manufactured by Rockland Immunochemicals are derived from starting materials of North American origin. Collection was performed in United States Department of Agriculture (USDA) inspected facilities and all materials have been inspected and certified to be free of disease and suitable for exportation. All properties listed are typical characteristics and are not specifications. All suggestions and data are offered in good faith but without guarantee as conditions and methods of use of our products are beyond our control. All claims must be made within 30 days following the date of delivery. The prospective user must determine the suitability of our materials before adopting them on a commercial scale. Suggested uses of our products are not recommendations to use our products in violation of any patent or as a license under any patent of Rockland Immunochemicals, Inc. If you require a commercial license to use this material and do not have one, then return this material, unopened to: Rockland Inc., P.O. BOX 5199, Limerick, Pennsylvania, USA.