

Datasheet for 600-401-EC6**RTP801 Antibody****Overview**

Description:	Anti-RTP801 (RABBIT) Antibody - 600-401-EC6
Item No.:	600-401-EC6
Size:	100 µg
Applications:	ELISA, IF, IHC, WB
Reactivity:	Human, Mouse, Rat
Host Species:	Rabbit

Product Details

Background:	RTP801 was initially identified as a gene induced by DNA damage, and later found to also be regulated by other cellular stresses such as hypoxia and glucocorticoid treatment. Recently, RTP801 has been shown to act as a mediator of tuberous sclerosis complex (TSC)-dependent regulation of the mammalian Target of Rapamycin (mTOR), an evolutionarily conserved serine/threonine kinase that regulates cell growth and cell cycle. In response to energy stress, RTP801 inhibits mTOR function, resulting in dephosphorylation of downstream targets such as ribosomal protein S6 kinase 1 and 4EBP1 and decreasing cell growth. Disregulation of RTP801 may thus contribute to human tumorigenesis.
Synonyms:	RTP801 Antibody, Dig2, REDD1, REDD-1, RTP801, DNA damage-inducible transcript 4 protein, HIF-1 responsive protein RTP801
Host Species:	Rabbit
Clonality:	Polyclonal
Format:	IgG

Target Details

Gene Name:	DDIT4
Reactivity:	Human, Mouse, Rat
Immunogen Type:	Conjugated Peptide

Immunogen:	Anti-RTP801 antibody was prepared from whole rabbit serum produced by repeated immunizations with a 12 amino acid synthetic peptide from near the internal region of human RTP801.
Purity/Specificity:	Anti-RTP801 Antibody was affinity purified from monospecific antiserum by immunoaffinity chromatography. Cross reactivity with RTP801 from other sources has not been determined.
Relevant Links:	<ul style="list-style-type: none">• UniProtKB - Q9NX09• GeneID - 54541• NCBI - NP_061931

Application Details

Tested Applications:	ELISA, IF, IHC, WB
Application Note:	Anti-RTP801 Antibody has been tested for use in ELISA, Western Blotting, Immunofluorescence, and Immunohistochemistry. Specific conditions for reactivity should be optimized by the end user. Expect a band at approximately 25 kDa in Western Blots of specific cell lysates and tissues.
Assay Dilutions:	All assays should be optimized by the user. Recommended dilutions (if any) may be listed below.
ELISA:	1:5,000 - 1:10,000
IF:	User Optimized
IHC:	5 µg/mL
WB:	.5-1 µg/mL

Formulation

Physical State:	Liquid (sterile filtered)
Concentration:	1 mg/mL by UV absorbance at 280 nm
Buffer:	0.01 M Sodium Phosphate, 0.25 M Sodium Chloride, pH 7.2
Preservative:	0.02% (w/v) Sodium Azide
Stabilizer:	None

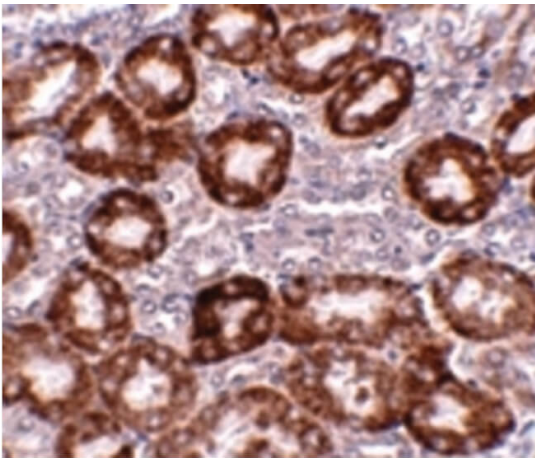
Shipping & Handling

Shipping Condition:	Dry Ice
----------------------------	---------

Storage Condition: Store vial at -20° C prior to opening. Aliquot contents and freeze at -20° C or below for extended storage. Avoid cycles of freezing and thawing. Centrifuge product if not completely clear after standing at room temperature. This product is stable for several weeks at 4° C as an undiluted liquid. Dilute only prior to immediate use.

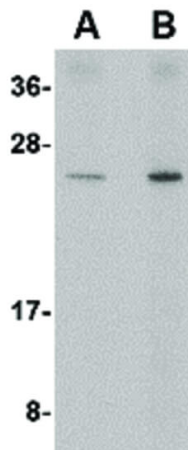
Expiration: Expiration date is one (1) year from date of receipt.

Images



Immunohistochemistry

Immunohistochemistry of RTP801 antibody. Tissue: Mouse kidney tissue. Fixation: formalin fixed paraffin embedded. Antigen retrieval: not required. Primary antibody: RTP801 antibody at 5 µg/mL for 1 h at RT. Secondary antibody: Peroxidase rabbit secondary antibody at 1:10,000 for 45 min at RT. Localization: RTP801 is nuclear and occasionally cytoplasmic. Staining: RTP801 as a precipitated red signal with hematoxylin purple nuclear counterstain.



Western Blot

Western Blot of RTP801 antibody. Lane A: Human kidney tissue lysate at 0.5 µg/mL. Lane B: Human kidney tissue lysate at 1 µg/mL. Load: 35 µg per lane. Secondary antibody: Peroxidase rabbit secondary antibody at 1:10,000 for 45 min at RT. Block: 5% BLOTTO overnight at 4°C. Predicted/Observed size: 25.3 kDa, ~25 kDa for RTP801.

Disclaimer

This product is for research use only and is not intended for therapeutic or diagnostic applications. Please contact a technical service representative for more information. All products of animal origin manufactured by Rockland Immunochemicals are derived from starting materials of North American origin. Collection was performed in United States Department of Agriculture (USDA) inspected facilities and all materials have been inspected and certified to be free of disease and suitable for exportation. All properties listed are typical characteristics and are not specifications. All suggestions and data are offered in good faith but without guarantee as conditions and methods of use of our products are beyond our control. All claims must be made within 30 days following the date of delivery. The prospective user must determine the suitability of our materials before adopting them on a commercial scale. Suggested uses of our products are not recommendations to use our products in violation of any patent or as a license under any patent of Rockland Immunochemicals, Inc. If you require a commercial license to use this material and do not have one, then return this material, unopened to: Rockland Inc., P.O. BOX 5199, Limerick, Pennsylvania, USA.