

Datasheet for 600-401-EB9**RPA Interacting Protein Antibody****Overview**

Description:	Anti-RPA Interacting Protein (RABBIT) Antibody - 600-401-EB9
Item No.:	600-401-EB9
Size:	100 µg
Applications:	ELISA, WB
Reactivity:	Human, Mouse, Rat
Host Species:	Rabbit

Product Details

Background:	Replication protein A (RPA) is a single-stranded-DNA binding protein involved in numerous eukaryotic DNA processes including replication, repair and recombination. RPA interacting protein (RPA IP) has been identified as an adapter protein that is involved in RPA nuclear import instead of the prototypical importin proteins that normally mediate nuclear import. Multiple isoforms of RPA IP are known to exist, with the longest isoform localized to the cytoplasm. Isoform 2 is sumoylated and is located in the PML nuclear body within the nucleus. It has been suggested that this isoform mediates the localization of the RPA complex into the PML nuclear body, thereby participating in RPA function in DNA metabolism.
Synonyms:	RPA Interacting Protein Antibody, RIP, HRIP, RPA-interacting protein, hRIP
Host Species:	Rabbit
Clonality:	Polyclonal
Format:	IgG

Target Details

Gene Name:	RPAIN
Reactivity:	Human, Mouse, Rat
Immunogen Type:	Conjugated Peptide
Immunogen:	Anti-RPA Interacting Protein antibody was prepared from whole rabbit serum produced by repeated immunizations with a 17 amino acid synthetic peptide from near the C-terminus of human RPA Interacting Protein.

Purity/Specificity: Anti-RPA Interacting Protein Antibody was affinity purified from monospecific antiserum by immunoaffinity chromatography. Cross reactivity with RPA Interacting Protein from other sources has not been determined.

Relevant Links:

- [UniProtKB - Q86UA6](#)
- [GeneID - 84268](#)
- [NCBI - NP_001028174](#)

Application Details

Tested Applications: ELISA, WB

Application Note: Anti-RPA Interacting Protein Antibody has been tested for use in ELISA and Western Blotting. Specific conditions for reactivity should be optimized by the end user. Expect a band at approximately 25 kDa in Western Blots of specific cell lysates and tissues.

Assay Dilutions: All assays should be optimized by the user. Recommended dilutions (if any) may be listed below.

ELISA: 1:5,000 - 1:10,000

WB: .5-1 µg/mL

Formulation

Physical State: Liquid (sterile filtered)

Concentration: 1 mg/mL by UV absorbance at 280 nm

Buffer: 0.01 M Sodium Phosphate, 0.25 M Sodium Chloride, pH 7.2

Preservative: 0.02% (w/v) Sodium Azide

Stabilizer: None

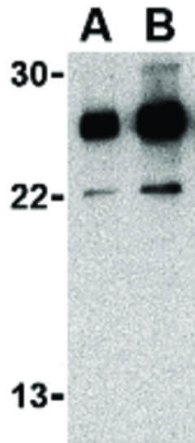
Shipping & Handling

Shipping Condition: Dry Ice

Storage Condition: Store vial at -20° C prior to opening. Aliquot contents and freeze at -20° C or below for extended storage. Avoid cycles of freezing and thawing. Centrifuge product if not completely clear after standing at room temperature. This product is stable for several weeks at 4° C as an undiluted liquid. Dilute only prior to immediate use.

Expiration: Expiration date is one (1) year from date of receipt.

Images



Western Blot

Western Blot of RPA Interacting Protein antibody. Lane A: Jurkat cell lysate at 0.5 $\mu\text{g}/\text{mL}$. Lane B: Jurkat cell lysate at 1 $\mu\text{g}/\text{mL}$. Load: 35 μg per lane. Secondary antibody: Peroxidase rabbit secondary antibody at 1:10,000 for 45 min at RT. Block: 5% BLOTTO overnight at 4°C. Predicted/Observed size: 24.78 kDa, ~25 kDa for RPAI.

Disclaimer

This product is for research use only and is not intended for therapeutic or diagnostic applications. Please contact a technical service representative for more information. All products of animal origin manufactured by Rockland Immunochemicals are derived from starting materials of North American origin. Collection was performed in United States Department of Agriculture (USDA) inspected facilities and all materials have been inspected and certified to be free of disease and suitable for exportation. All properties listed are typical characteristics and are not specifications. All suggestions and data are offered in good faith but without guarantee as conditions and methods of use of our products are beyond our control. All claims must be made within 30 days following the date of delivery. The prospective user must determine the suitability of our materials before adopting them on a commercial scale. Suggested uses of our products are not recommendations to use our products in violation of any patent or as a license under any patent of Rockland Immunochemicals, Inc. If you require a commercial license to use this material and do not have one, then return this material, unopened to: Rockland Inc., P.O. BOX 5199, Limerick, Pennsylvania, USA.