

Datasheet for 600-401-EB3**RNF8 Antibody****Overview**

Description:	Anti-RNF8 (RABBIT) Antibody - 600-401-EB3
Item No.:	600-401-EB3
Size:	100 µg
Applications:	ELISA, IF, WB
Reactivity:	Human, Mouse, Rat
Host Species:	Rabbit

Product Details

Background:	RNF8 was identified as a ubiquitin ligase (E3) containing a RING finger motif and a FHA domain. This protein has been shown to interact with several class II ubiquitin-conjugating enzymes including UBE2E1/UBCH6, UBE2E2, and UBE2E3. RNF8 assembles at DNA double-strand breaks (DSBs) via interactions through the FHA domain with the adaptor protein MDC1, resulting in an increase in DSB-associated H2A histone ubiquitinations mediated by the associated ubiquitin ligase RNF168 followed by the accumulation of 53BP1 and BRCA1 repair proteins. Together with RNF168, RNF8 plays an integral part of class switch recombination in B cells, allowing the production of several classes of antibodies, through the recruitment of 53BP1 and BRCA1 to the DSB sites.
Synonyms:	RNF8 Antibody, hRNF8, KIAA0646, E3 ubiquitin-protein ligase RNF8, RING finger protein 8, hRNF8
Host Species:	Rabbit
Clonality:	Polyclonal
Format:	IgG

Target Details

Gene Name:	RNF8
Reactivity:	Human, Mouse, Rat
Immunogen Type:	Conjugated Peptide

Immunogen:	Anti-RNF8 antibody was prepared from whole rabbit serum produced by repeated immunizations with a 14 amino acid synthetic peptide near the C-terminus of human RNF8.
Purity/Specificity:	Anti-RNF8 Antibody was affinity purified from monospecific antiserum by immunoaffinity chromatography. Cross reactivity with RNF8 from other sources has not been determined.
Relevant Links:	<ul style="list-style-type: none">• UniProtKB - O76064• GeneID - 9025• NCBI - NP_003949

Application Details

Tested Applications:	ELISA, IF, WB
Application Note:	Anti-RNF8 Antibody has been tested for use in ELISA, Western Blotting and Immunofluorescence. Specific conditions for reactivity should be optimized by the end user. Expect a band at approximately 56 kDa in Western Blots of specific cell lysates and tissues.
Assay Dilutions:	All assays should be optimized by the user. Recommended dilutions (if any) may be listed below.
ELISA:	1:10,000 - 1:20,000
IF:	20 µg/mL
WB:	1-2 µg/mL

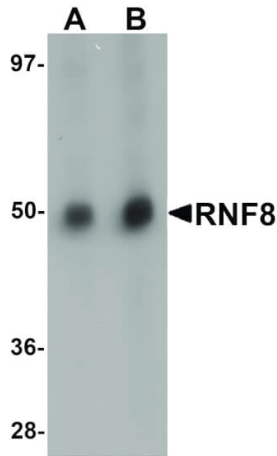
Formulation

Physical State:	Liquid (sterile filtered)
Concentration:	1 mg/mL by UV absorbance at 280 nm
Buffer:	0.01 M Sodium Phosphate, 0.25 M Sodium Chloride, pH 7.2
Preservative:	0.02% (w/v) Sodium Azide
Stabilizer:	None

Shipping & Handling

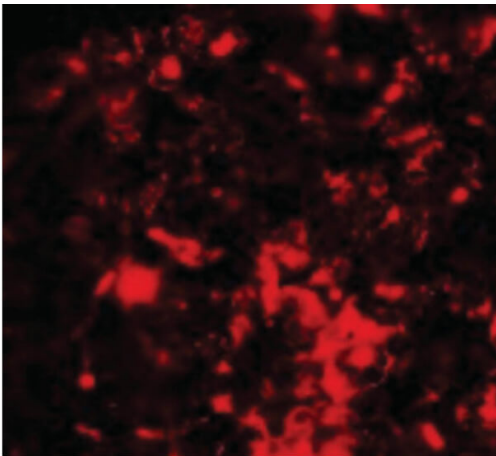
Shipping Condition:	Wet Ice
Storage Condition:	Antibody can be stored at 4°C up to one year. Antibodies should not be exposed to prolonged high temperatures.
Expiration:	Expiration date is one (1) year from date of receipt.

Images



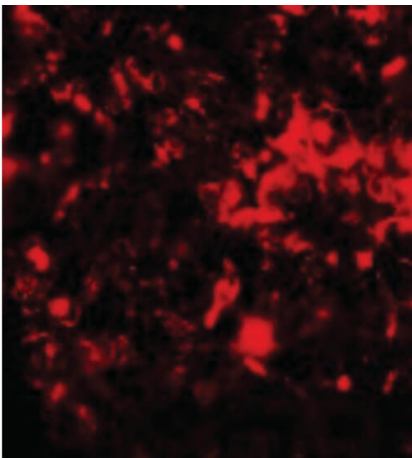
Western Blot

Western Blot of RNF8 antibody. Lane 1: Human lung tissue lysate with RNF8 antibody at 1 µg/mL. Lane 2: Human lung tissue lysate with RNF8 antibody at 2 µg/mL. Secondary antibody: Peroxidase rabbit secondary antibody at 1:10,000 for 45 min at RT. Block: 5% BLOTTO overnight at 4°C. Predicted/Observed size: 56 kDa, 50 kDa for RNF8. Other band(s): RNF8 splice variants and isoforms.



Immunofluorescence Microscopy

Immunofluorescence Microscopy of RNF8 antibody. Tissue: Rat lung cells. Fixation: 0.5% PFA. Antigen retrieval: not required. Primary antibody: RNF8 antibody at 20 µg/mL for 1 h at RT. Secondary antibody: Fluorescein rabbit secondary antibody at 1:10,000 for 45 min at RT. Localization: RNF8 is nuclear. Staining: RNF8 as red fluorescent signal.



Immunofluorescence Microscopy

Immunofluorescence Microscopy of RNF8 antibody. Tissue: Rat lung tissue. Fixation: 0.5% PFA. Antigen retrieval: not required. Primary antibody: RNF8 antibody at 20 µg/mL for 1 h at RT. Secondary antibody: Fluorescein rabbit secondary antibody at 1:10,000 for 45 min at RT. Localization: RNF8 is nuclear. Staining: RNF8 as red fluorescent signal.

Disclaimer

This product is for research use only and is not intended for therapeutic or diagnostic applications. Please contact a technical service representative for more information. All products of animal origin manufactured by Rockland Immunochemicals are derived from starting materials of North American origin. Collection was performed in United States Department of Agriculture (USDA) inspected facilities and all materials have been inspected and certified to be free of disease and suitable for exportation. All properties listed are typical characteristics and are not specifications. All suggestions and data are offered in good faith but without guarantee as conditions and methods of use of our products are beyond our control. All claims must be made within 30 days following the date of delivery. The prospective user must determine the suitability of our materials before adopting them on a commercial scale. Suggested uses of our products are not recommendations to use our products in violation of any patent or as a license under any patent of Rockland Immunochemicals, Inc. If you require a commercial license to use this material and do not have one, then return this material, unopened to: Rockland Inc., P.O. BOX 5199, Limerick, Pennsylvania, USA.