

Datasheet for 600-401-EB0**RNASET2 Antibody****Overview**

Description:	Anti-RNASET2 (RABBIT) Antibody - 600-401-EB0
Item No.:	600-401-EB0
Size:	100 µg
Applications:	ELISA, IF, IHC, WB
Reactivity:	Human, Mouse, Rat
Host Species:	Rabbit

Product Details

Background:	RNASET2 is a novel member of the Rh/T2/S-glycoprotein class of extracellular ribonucleases. It is a single copy gene that maps to 6q27, a region associated with human malignancies and chromosomal rearrangement, and has been suggested to function as a tumor suppressor protein. Its expression is suppressed in Human T-cell Leukemia Virus type 1 (HTLV-1) infected cells following the binding of the HTLV-1 Tax protein to the RNASET2 promoter. As Adult T-cell leukemia (ATL) is one of the primary diseases caused by HTLV-1 infection, a reduction in the level of RNASET2 by Tax may play a role in ATL development.
Synonyms:	RNASET2 Antibody, RNASE6PL, bA514O12.3, RNASE6PL, Ribonuclease T2, Ribonuclease 6
Host Species:	Rabbit
Clonality:	Polyclonal
Format:	IgG

Target Details

Gene Name:	RNASET2
Reactivity:	Human, Mouse, Rat
Immunogen Type:	Conjugated Peptide
Immunogen:	Anti-RNASET2 antibody was prepared from whole rabbit serum produced by repeated immunizations with a 16 amino acid synthetic peptide near the C-terminus of human RNASET2.

Purity/Specificity:	Anti-RNASET2 Antibody was affinity purified from monospecific antiserum by immunoaffinity chromatography. Cross reactivity with RNASET2 from other sources has not been determined.
Relevant Links:	<ul style="list-style-type: none">• UniProtKB - O00584• GeneID - 8635• NCBI - NP_003721

Application Details

Tested Applications:	ELISA, IF, IHC, WB
Application Note:	Anti-RNASET2 Antibody has been tested for use in ELISA, Western Blotting, Immunocytochemistry and Immunofluorescence. Specific conditions for reactivity should be optimized by the end user. Expect a band at approximately 29 kDa in Western Blots of specific cell lysates and tissues.
Assay Dilutions:	All assays should be optimized by the user. Recommended dilutions (if any) may be listed below.
ELISA:	1:10,000
IF:	User Optimized
IHC:	User Optimized
WB:	1 µg/mL

Formulation

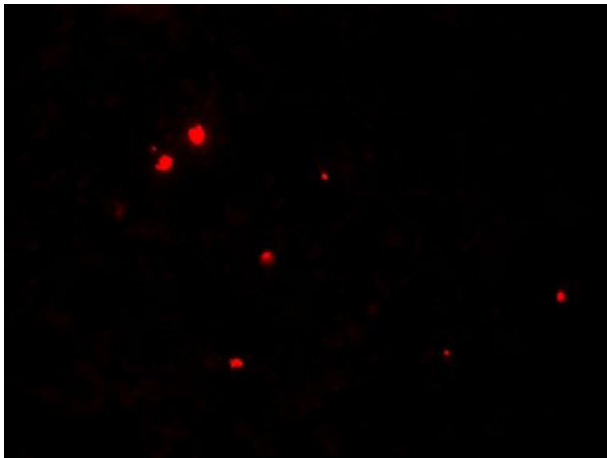
Physical State:	Liquid (sterile filtered)
Concentration:	1 mg/mL by UV absorbance at 280 nm
Buffer:	0.01 M Sodium Phosphate, 0.25 M Sodium Chloride, pH 7.2
Preservative:	0.02% (w/v) Sodium Azide
Stabilizer:	None

Shipping & Handling

Shipping Condition:	Dry Ice
Storage Condition:	Store vial at -20° C prior to opening. Aliquot contents and freeze at -20° C or below for extended storage. Avoid cycles of freezing and thawing. Centrifuge product if not completely clear after standing at room temperature. This product is stable for several weeks at 4° C as an undiluted liquid. Dilute only prior to immediate use.

Expiration: Expiration date is one (1) year from date of receipt.

Images

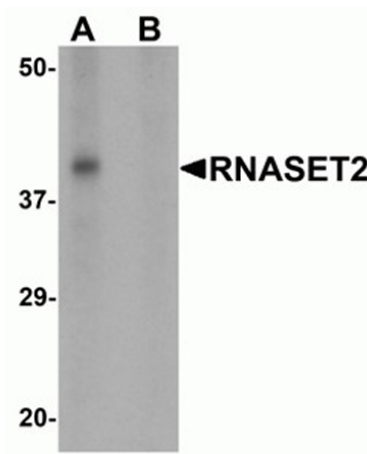


Immunofluorescence Microscopy

Immunofluorescence of RNASET2.

Cell: SW480 cells.

Primary Antibody: RNASET2 antibody at 5 µg/ml.

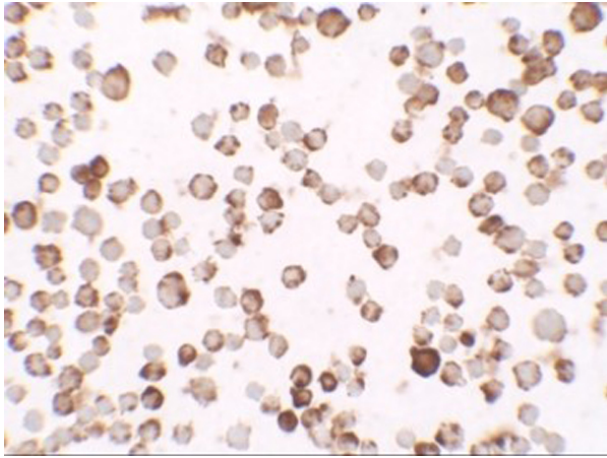


Western Blot

Western blot analysis of RNASET2.

Load: SW480 cell lysate.

Primary Antibody: RNASET2 antibody at 1 µg/mL in (A) the absence and (B) the presence of blocking peptide.

**Immunocytochemistry**

Immunocytochemistry of RNASET2.

Cell: SW480 cells.

Primary Antibody: RNASET2 antibody at 2.5 µg/ml.

Disclaimer

This product is for research use only and is not intended for therapeutic or diagnostic applications. Please contact a technical service representative for more information. All products of animal origin manufactured by Rockland Immunochemicals are derived from starting materials of North American origin. Collection was performed in United States Department of Agriculture (USDA) inspected facilities and all materials have been inspected and certified to be free of disease and suitable for exportation. All properties listed are typical characteristics and are not specifications. All suggestions and data are offered in good faith but without guarantee as conditions and methods of use of our products are beyond our control. All claims must be made within 30 days following the date of delivery. The prospective user must determine the suitability of our materials before adopting them on a commercial scale. Suggested uses of our products are not recommendations to use our products in violation of any patent or as a license under any patent of Rockland Immunochemicals, Inc. If you require a commercial license to use this material and do not have one, then return this material, unopened to: Rockland Inc., P.O. BOX 5199, Limerick, Pennsylvania, USA.