

Datasheet for 600-401-E68

Sprouty-2 Antibody

Overview

Description:	Anti-Sprouty-2 (RABBIT) Antibody - 600-401-E68
Item No.:	600-401-E68
Size:	100 µg
Applications:	ELISA, IF, IHC, Multiplex
Reactivity:	Human
Host Species:	Rabbit

Product Details

Background:	Sprouty was originally identified as an inhibitor of Drosophila epidermal growth factor (EGF) and fibroblast growth factor (FGF) receptor signaling during tracheal development. Four isoforms of mammalian sprouty are known (Spry1-Spry4). The role of the mammalian analogs has not been clearly elucidated although it is believed that human Sprouty-2 (hSpry2) may be an inhibitor of cellular migration and proliferation. Spry2 and Spry4 show considerable sequence homology between human and mouse at the C-terminus of the protein. Significant sequence divergence occurs at the N-terminus. Spry2 appears to be abundant in brain, lung and heart tissue, with lesser amounts found in kidney and skeletal muscle.
Synonyms:	Rabbit anti-Sprouty2 antibody, Rabbit anti-Sprouty-2 antibody, Sprouty 2, SPRY2, SPRY 2, Spry-2, Protein sprouty homolog 2
Host Species:	Rabbit
Clonality:	Polyclonal
Format:	IgG

Target Details

Gene Name:	SPRY2
Reactivity:	Human
Immunogen Type:	Conjugated Peptide

Immunogen:	Anti-Sprouty-2 affinity purified antibody was purified from monospecific rabbit antiserum prepared via repeated immunizations with peptide corresponding to an internal region of human sprouty-2.
Purity/Specificity:	Anti-Sprouty-2 was affinity purified from monospecific antiserum by immunoaffinity chromatography. Sprouty-2 antibody reacts with human Sprouty 2 protein. A BLAST analysis was used to suggest reactivity with Sprouty 2 from human, monkey, and orangutan based on a 100% homology with the immunizing sequence. Cross-reactivity with Sprouty2 from other sources has not been determined.
Relevant Links:	<ul style="list-style-type: none">• UniProtKB - O43597• NCBI - AAC04258.1• GeneID - 10253

Application Details

Tested Applications:	ELISA, IF, IHC, Multiplex
Application Note:	Anti-Sprouty-2 antibody has been tested by ELISA, Immunofluorescence, Immunohistochemistry, and is suitable for western blotting. Specific conditions for reactivity should be optimized by the end user.
Assay Dilutions:	All assays should be optimized by the user. Recommended dilutions (if any) may be listed below.
ELISA:	User Optimized
IF:	User Optimized
IHC:	10 µg/mL
WB:	1:500-1:5,000

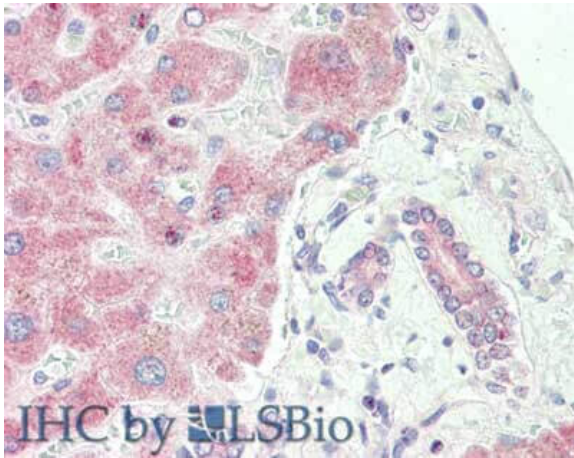
Formulation

Physical State:	Liquid (sterile filtered)
Concentration:	1.04 mg/mL by UV absorbance at 280 nm
Buffer:	0.02 M Potassium Phosphate, 0.15 M Sodium Chloride, pH 7.2
Preservative:	0.01% (w/v) Sodium Azide
Stabilizer:	None

Shipping & Handling

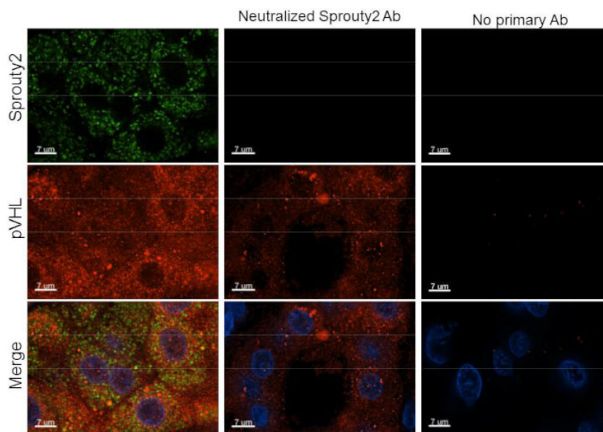
Shipping Condition:	Dry Ice
Storage Condition:	Store vial at -20° C prior to opening. Aliquot contents and freeze at -20° C or below for extended storage. Avoid cycles of freezing and thawing. Centrifuge product if not completely clear after standing at room temperature. This product is stable for several weeks at 4° C as an undiluted liquid. Dilute only prior to immediate use.
Expiration:	Expiration date is one (1) year from date of receipt.

Images



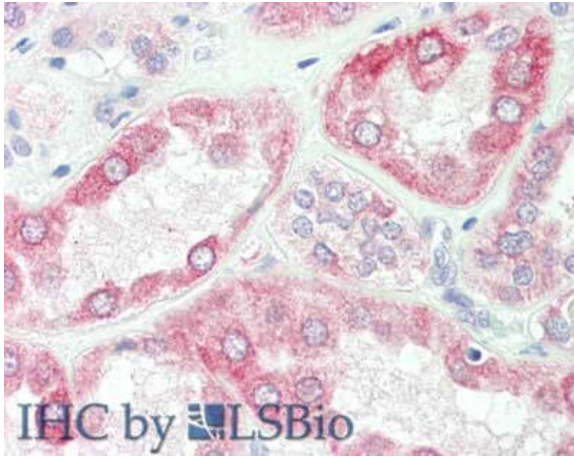
Immunohistochemistry

Immunohistochemistry of rabbit anti-Sprouty-2 antibody. Tissue: liver. Fixation: formalin fixed paraffin embedded. Antigen retrieval: not required. Primary antibody: Anti-sprouty 2 at 10 µg/mL for 1 h at RT. Secondary antibody: Peroxidase rabbit secondary antibody at 1:10,000 for 45 min at RT. Staining: Sprouty-2 as precipitated red signal with hematoxylin purple nuclear counterstain.



Immunohistochemistry

Immunohistochemistry of Rabbit anti-Sprouty2 antibody. Tissue: human kidney clear cell tumor. Fixation: formalin fixed, paraffin embedded. Antigen retrieval: yes. Primary antibody: Sprouty2 antibody at 1:250. Secondary antibody: alexafluor 488 secondary at 1:500 overnight at 4°C. Localization: nucleus and cytoplasm. Staining: green = sprouty2, Blue = dapi, red= vhl.

**Immunohistochemistry**

Immunohistochemistry of rabbit anti-Sprouty-2 antibody.
Tissue: kidney. Fixation: formalin fixed paraffin embedded.

Antigen retrieval: not required. Primary antibody: Anti-sprouty 2 at 10 µg/mL for 1 h at RT. Secondary antibody: Peroxidase rabbit secondary antibody at 1:10,000 for 45 min at RT. Staining: Sprouty-2 as precipitated red signal with hematoxylin purple nuclear counterstain.

Disclaimer

This product is for research use only and is not intended for therapeutic or diagnostic applications. Please contact a technical service representative for more information. All products of animal origin manufactured by Rockland Immunochemicals are derived from starting materials of North American origin. Collection was performed in United States Department of Agriculture (USDA) inspected facilities and all materials have been inspected and certified to be free of disease and suitable for exportation. All properties listed are typical characteristics and are not specifications. All suggestions and data are offered in good faith but without guarantee as conditions and methods of use of our products are beyond our control. All claims must be made within 30 days following the date of delivery. The prospective user must determine the suitability of our materials before adopting them on a commercial scale. Suggested uses of our products are not recommendations to use our products in violation of any patent or as a license under any patent of Rockland Immunochemicals, Inc. If you require a commercial license to use this material and do not have one, then return this material, unopened to: Rockland Inc., P.O. BOX 5199, Limerick, Pennsylvania, USA.