

**Datasheet for 600-401-E30****p90 RSK2 Antibody****Overview**

<b>Description:</b>	Anti-p90 RSK2 (RABBIT) Antibody - 600-401-E30
<b>Item No.:</b>	600-401-E30
<b>Size:</b>	100 µL
<b>Applications:</b>	WB
<b>Reactivity:</b>	Human
<b>Host Species:</b>	Rabbit

**Product Details**

<b>Background:</b>	p90 RSK2 Antibody detects p90 RSK2 protein. The p90 ribosomal S6 kinases (RSK)1–4 are downstream members of the extracellular signal-regulated kinase (ERK)/MAPK cascade. The loss of RSK2 activity in humans leads to Coffin–Lowry syndrome, which is characterized by mental retardation and growth deficits. Recent work suggests that RSK2 exerts a tonic regulation on G-protein coupled signaling. RSK1 is studied in cancer research and is known to inactivate tumor suppressor complexes and death kinases. Anti-p90 RSK1 Antibody is ideal for investigators involved in Neuroscience, Cell Signaling, and Cancer research.
<b>Synonyms:</b>	p90 RSK2, Ribosomal S6 Kinase 2, RSK2, S6K-alpha 2, 90 kDa Ribosomal Protein S6 Kinase 2, MAP kinase-activated protein kinase 2a, or MAPKAPK2A
<b>Host Species:</b>	Rabbit
<b>Clonality:</b>	Polyclonal
<b>Format:</b>	IgG

**Target Details**

<b>Gene Name:</b>	RPS6KA2
<b>Reactivity:</b>	Human
<b>Immunogen Type:</b>	Conjugated Peptide
<b>Immunogen:</b>	Anti-p90 RSK2 Antibody was produced by repeated immunizations with a synthetic peptide corresponding to amino acid residues from the C-terminal region.

**Purity/Specificity:** Anti-p90 RSK2 antibody is directed against mouse p90 RSK2 protein. The antibody was affinity purified from monospecific antiserum by immunoaffinity purification. Reactivity is expected from the following species based on 100% sequence homology: bovine, canine, chicken, mouse and rat. Cross reactivity with p90 RSK2 from other species has not been determined.

**Relevant Links:**

- [UniProtKB - Q15349](#)
- [GeneID - 6196](#)

## Application Details

**Tested Applications:** WB

**Application Note:** Anti-p90 RSK2 Antibody is tested for use in Western Blotting. Specific conditions for reactivity should be optimized by the end user. Expect a band of approximately 90 kDa in size corresponding to the RSK protein in the appropriate cell lysate or extract.

**Assay Dilutions:** All assays should be optimized by the user. Recommended dilutions (if any) may be listed below.

**WB:** 1:1000

## Formulation

**Physical State:** Liquid

**Buffer:** 0.01 M HEPES, 0.15 M Sodium Chloride, pH 7.5

**Stabilizer:** 0.1 mg/ml Bovine Serum Albumin (BSA) - IgG and Protease free, 50% (v/v) Glycerol

## Shipping & Handling

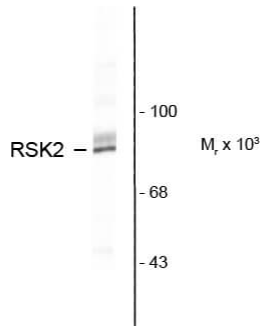
**Shipping Condition:** Dry Ice

**Storage Condition:** Store vial at -20° C prior to opening. This product is stable at 4° C as an undiluted liquid. For extended storage, aliquot contents and freeze at -20° C or below. Avoid cycles of freezing and thawing. Dilute only prior to immediate use.

**Expiration:** Expiration date is one (1) year from date of receipt.

## Images

### Anti-Ribosomal S6 Kinase



Western blot of rat hippocampal lysate showing specific immunolabeling of the ~90k RSK2 protein.

### Western Blot

Western blot of p90 RSK2 Antibody. Lane 1: rat hippocampal lysate. Primary Antibody: Anti-p90RSK2 Antibody at 1 $\mu$ g/mL. Secondary Antibody: Goat anti-Rabbit HRP. Observed: ~90kDa for RSK2 protein.

## Disclaimer

This product is for research use only and is not intended for therapeutic or diagnostic applications. Please contact a technical service representative for more information. All products of animal origin manufactured by Rockland Immunochemicals are derived from starting materials of North American origin. Collection was performed in United States Department of Agriculture (USDA) inspected facilities and all materials have been inspected and certified to be free of disease and suitable for exportation. All properties listed are typical characteristics and are not specifications. All suggestions and data are offered in good faith but without guarantee as conditions and methods of use of our products are beyond our control. All claims must be made within 30 days following the date of delivery. The prospective user must determine the suitability of our materials before adopting them on a commercial scale. Suggested uses of our products are not recommendations to use our products in violation of any patent or as a license under any patent of Rockland Immunochemicals, Inc. If you require a commercial license to use this material and do not have one, then return this material, unopened to: Rockland Inc., P.O. BOX 5199, Limerick, Pennsylvania, USA.