

Datasheet for 600-401-E23

Raf-1 phospho S301 Antibody**Overview**

Description:	Anti-Raf-1 pS301 (RABBIT) Antibody - 600-401-E23
Item No.:	600-401-E23
Size:	100 µL
Applications:	WB
Reactivity:	Human, Rat
Host Species:	Rabbit

Product Details

Background:	Raf-1 pS301 antibody detects phosphorylated Raf-1. The Ras pathway is a critical signal transduction cascade involved in regulating cellular proliferation, differentiation, survival, and oncogenic transformation. Members of the Raf serine/threonine kinase family are key intermediates in this cascade, functioning to relay signals from activated Ras to the downstream protein kinases MEK and ERK. Previous studies have shown that phosphorylation is required for Raf-1 activation. Recent work has demonstrated that phosphorylation also regulates the downregulation of Raf with two sites participating: Ser301 and Ser642. Anti-Raf-1 pS301 Antibody is ideal for investigators involved in Cancer, Neuroscience, Signal Transduction research.
Synonyms:	RAF proto-oncogene serine/threonine-protein kinase, Proto-oncogene c-RAF, cRaf
Host Species:	Rabbit
Clonality:	Polyclonal
Format:	IgG

Target Details

Gene Name:	Raf1
Reactivity:	Human, Rat
PTM Specificity:	Phosphorylation
Immunogen Type:	Conjugated Peptide

Immunogen:	Anti-Raf-1 pS301 Antibody was produced in rabbit by repeated immunizations with synthetic phospho-peptide corresponding to amino acid residues surrounding Ser301 conjugated to KLH.
Purity/Specificity:	Anti-Raf-1 pS301 antibodies are affinity purified from monospecific antiserum by immunoaffinity purification. Reactivity is expected the following species based on 100% sequence homology: bovine, canine, chicken, mouse, non-human primate and Xenopus.
Relevant Links:	<ul style="list-style-type: none">• UniProtKB - P11345• GeneID - 24703• UniProtKB - P11345.1

Application Details

Tested Applications:	WB
Application Note:	Anti-Raf-1 pS301 antibody is tested for use in Western Blotting. Specific conditions for reactivity should be optimized by the end user. Expect a band of approximately 74 kDa in size corresponding to the Raf-1 protein phosphorylated at Ser301 in the appropriate cell lysate or extract. Immunolabeling of the Raf-1 protein band is blocked by lambda-phosphatase treatment.
Assay Dilutions:	All assays should be optimized by the user. Recommended dilutions (if any) may be listed below.
WB:	1:1000

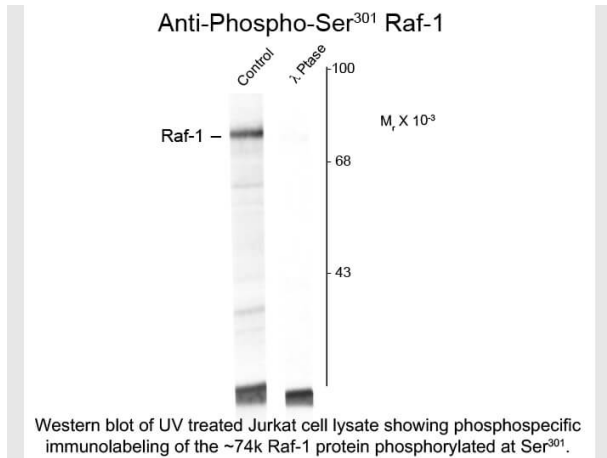
Formulation

Physical State:	Liquid
Buffer:	0.01 M HEPES, 0.15 M Sodium Chloride, pH 7.5
Stabilizer:	0.1 mg/ml Bovine Serum Albumin (BSA) - IgG and Protease free, 50% (v/v) Glycerol

Shipping & Handling

Shipping Condition:	Dry Ice
Storage Condition:	Store vial at -20° C prior to opening. This product is stable at 4° C as an undiluted liquid. For extended storage, aliquot contents and freeze at -20° C or below. Avoid cycles of freezing and thawing. Dilute only prior to immediate use.
Expiration:	Expiration date is one (1) year from date of receipt.

Images



Western Blot

Western Blot of Rabbit anti-Raf-1 pS301 antibody. Lane 1: UV treated human Jurkat cell lysate (Control). Lane 2: λ -Ptase. Load: 10 μ g per lane. Primary antibody: Raf-1 pS301 antibody at 1:1,000 for overnight at 4°C. Secondary antibody: IRDye800™ rabbit secondary antibody at 1:10,000 for 45 min at RT. Block: 5% BLOTTO overnight at 4°C. Predicted/Observed size: 74 kDa for Raf-1 pS301. Other band(s): Raf-1 pS301 splice variants and isoforms.

Disclaimer

This product is for research use only and is not intended for therapeutic or diagnostic applications. Please contact a technical service representative for more information. All products of animal origin manufactured by Rockland Immunochemicals are derived from starting materials of North American origin. Collection was performed in United States Department of Agriculture (USDA) inspected facilities and all materials have been inspected and certified to be free of disease and suitable for exportation. All properties listed are typical characteristics and are not specifications. All suggestions and data are offered in good faith but without guarantee as conditions and methods of use of our products are beyond our control. All claims must be made within 30 days following the date of delivery. The prospective user must determine the suitability of our materials before adopting them on a commercial scale. Suggested uses of our products are not recommendations to use our products in violation of any patent or as a license under any patent of Rockland Immunochemicals, Inc. If you require a commercial license to use this material and do not have one, then return this material, unopened to: Rockland Inc., P.O. BOX 5199, Limerick, Pennsylvania, USA.