

Datasheet for 600-401-DZ1**RICK Antibody****Overview**

Description:	Anti-RICK (RABBIT) Antibody - 600-401-DZ1
Item No.:	600-401-DZ1
Size:	100 µg
Applications:	ELISA, IF, IHC, WB
Reactivity:	Human, Mouse, Rat
Host Species:	Rabbit

Product Details

Background:	Apoptosis is mediated by death domain (DD) and/or caspase recruitment domain (CARD) containing molecules and a caspase family of proteases. DD-containing serine/threonine kinase RIP regulates Fas-induced apoptosis. A novel CARD-containing serine/threonine kinase was recently identified and designated RICK/RIP2/CARDIAK for RIP-like interacting CLARP kinase, receptor interacting protein-2, and CARD-containing ICE associated kinase, respectively. RICK contains an N-terminal kinase catalytic domain and a C-terminal CARD domain. Overexpression of RICK induced apoptosis and activation of NF-κB and JNK. RICK interacts with members of the TRAF family, CLARP and caspase-1. Thus, RICK represents a novel kinase that regulates TNF and Fas induced-apoptosis and that is involved in the generation of proinflammatory cytokine IL-1β. The messenger RNA of RICK is expressed in multiple human tissues.
Synonyms:	RICK Antibody, CCK, RICK, RIP2, CARD3, GIG30, CARDIAK, UNQ277/PRO314/PRO34092, CARD-containing interleukin-1 beta-converting enzyme-associated kinase, CARD-containing IL-1 beta ICE-kinase
Host Species:	Rabbit
Clonality:	Polyclonal
Format:	IgG

Target Details

Gene Name:	RIPK2
Reactivity:	Human, Mouse, Rat

Immunogen Type:	Conjugated Peptide
Immunogen:	Anti-RICK antibody was prepared from whole rabbit serum produced by repeated immunizations with a peptide corresponding to amino acids near the N-terminus of human RICK.
Purity/Specificity:	Anti-RICK Antibody was affinity purified from monospecific antiserum by immunoaffinity chromatography. Cross reactivity with RICK from other sources has not been determined.
Relevant Links:	<ul style="list-style-type: none">• UniProtKB - O43353• GenelD - 8767• NCBI - O43353

Application Details

Tested Applications:	ELISA, IF, IHC, WB
Application Note:	Anti-RICK Antibody has been tested for use in ELISA, Western Blotting, Immunocytochemistry, and immunofluorescence. Specific conditions for reactivity should be optimized by the end user. Expect a band at approximately 62 kDa in Western Blots of specific cell lysates and tissues.
Assay Dilutions:	All assays should be optimized by the user. Recommended dilutions (if any) may be listed below.
ELISA:	1:10,000
IF:	20 µg/mL
WB:	1 µg/mL

Formulation

Physical State:	Liquid (sterile filtered)
Concentration:	1mg/ml by UV absorbance at 280 nm
Buffer:	0.01 M Sodium Phosphate, 0.25 M Sodium Chloride, pH 7.2
Preservative:	0.02% (w/v) Sodium Azide
Stabilizer:	None

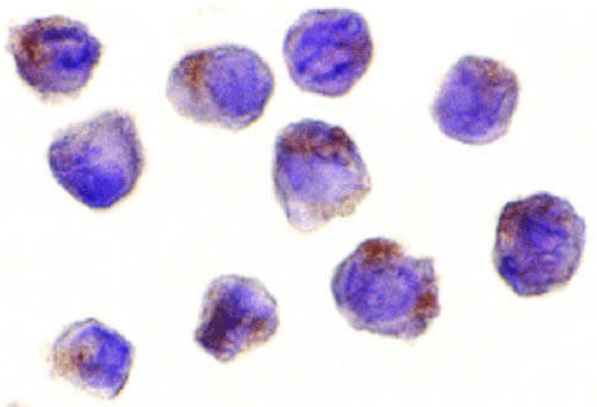
Shipping & Handling

Shipping Condition:	Wet Ice
----------------------------	---------

Storage Condition: Antibody can be stored at 4°C up to one year. Antibodies should not be exposed to prolonged high temperatures.

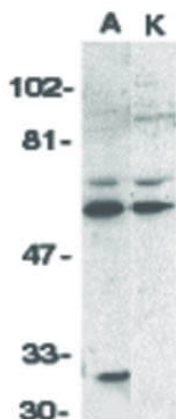
Expiration: Expiration date is one (1) year from date of receipt.

Images



Immunocytochemistry

Immunocytochemistry of RICK antibody. Cells: A431 cells. Fixation: formalin fixed paraffin embedded. Antigen retrieval: not required. Primary antibody: RICK antibody at 10 µg/mL for 1 h at RT. Secondary antibody: Peroxidase rabbit secondary antibody at 1:10,000 for 45 min at RT. Localization: RICK is cytoplasmic. Staining: RICK as precipitated brown signal with hematoxylin blue nuclear counterstain.



Western Blot

Western Blot of RICK antibody. Lane 1: A431 whole cell lysate. Lane 2: K562 whole cell lysate. Load: 35 µg per lane. Primary antibody: RICK antibody at 1:1000 for overnight at 4°C. Secondary antibody: Peroxidase rabbit secondary antibody at 1:10,000 for 45 min at RT. Block: 5% BLOTTO overnight at 4°C. Predicted/Observed size: 61.2 kDa, 60 kDa for RICK. Other band(s): RICK splice variants and isoforms.

Disclaimer

This product is for research use only and is not intended for therapeutic or diagnostic applications. Please contact a technical service representative for more information. All products of animal origin manufactured by Rockland Immunochemicals are derived from starting materials of North American origin. Collection was performed in United States Department of Agriculture (USDA) inspected facilities and all materials have been inspected and certified to be free of disease and suitable for exportation. All properties listed are typical characteristics and are not specifications. All suggestions and data are offered in good faith but without guarantee as conditions and methods of use of our products are beyond our control. All claims must be made within 30 days following the date of delivery. The prospective user must determine the suitability of our materials before adopting them on a commercial scale. Suggested uses of our products are not recommendations to use our products in violation of any patent or as a license under any patent of Rockland Immunochemicals, Inc. If you require a commercial license to use this material and do not have one, then return this material, unopened to: Rockland Inc., P.O. BOX 5199, Limerick, Pennsylvania, USA.