

Datasheet for 600-401-DZ0**RHOT1 Antibody****Overview**

Description:	Anti-RHOT1 (RABBIT) Antibody - 600-401-DZ0
Item No.:	600-401-DZ0
Size:	100 µg
Applications:	ELISA, IF, IHC, WB
Reactivity:	Human, Mouse, Rat
Host Species:	Rabbit

Product Details

Background:	The Ras homolog family member T1 (RHOT) is an atypical Rho Ca ²⁺ -binding GTPase that localizes to the mitochondria (1). RHOT1, the related protein RHOT2, the adaptor protein Milton, and the PTEN induced putative kinase 1 (PINK1), form a complex that is involved in axonal transport of mitochondria (2,3). Both PINK1 and Parkin target RHOT1 for phosphorylation and degradation, causing the arrest of mitochondrial motility (4).
Synonyms:	Ras homolog family member T1, mitochondrial Rho GTPase 1, ARHT1, MIRO-1, MIRO1, MIRO
Host Species:	Rabbit
Clonality:	Polyclonal
Format:	IgG

Target Details

Gene Name:	RHOT1
Reactivity:	Human, Mouse, Rat
Immunogen Type:	Conjugated Peptide
Immunogen:	Anti-RHOT1 antibody was prepared from whole rabbit serum produced by repeated immunizations with a 15 amino acid peptide near the N-terminus of human RHOT1.
Purity/Specificity:	Anti-RHOT1 antibody was affinity purified from monospecific antiserum by immunoaffinity chromatography. RHOT1 antibody is human, mouse and rat reactive. At least three isoforms of RHOT1 are known to exist; this antibody will detect all three isoforms.

Relevant Links:	<ul style="list-style-type: none">• UniProtKB - Q8IXI2• GeneID - 55288• NCBI - NP_001028740
------------------------	---

Application Details

Tested Applications:	ELISA, IF, IHC, WB
Application Note:	Anti-RHOT1 Antibody has been tested for use in ELISA, immunohistochemistry, immunofluorescence, and Western Blotting. Specific conditions for reactivity should be optimized by the end user. Expect a band at approximately 71 kDa in Western Blots of specific cell lysates and tissues.
Assay Dilutions:	All assays should be optimized by the user. Recommended dilutions (if any) may be listed below.
ELISA:	1:10,000 - 1:20,000
IF:	20 µg/mL
IHC:	5 µg/mL
WB:	1-2 µg/mL

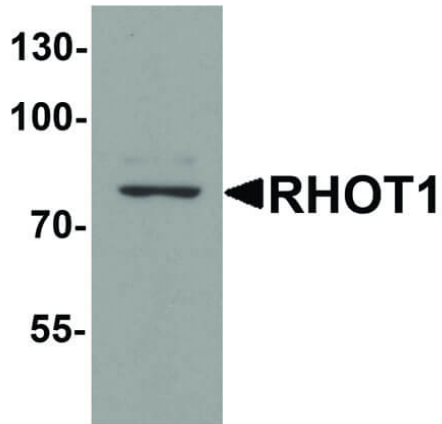
Formulation

Physical State:	Liquid (sterile filtered)
Concentration:	1 mg/mL by UV absorbance at 280 nm
Buffer:	0.01 M Sodium Phosphate, 0.25 M Sodium Chloride, pH 7.2
Preservative:	0.02% (w/v) Sodium Azide
Stabilizer:	None

Shipping & Handling

Shipping Condition:	Dry Ice
Storage Condition:	Store vial at -20° C prior to opening. Aliquot contents and freeze at -20° C or below for extended storage. Avoid cycles of freezing and thawing. Centrifuge product if not completely clear after standing at room temperature. This product is stable for several weeks at 4° C as an undiluted liquid. Dilute only prior to immediate use.
Expiration:	Expiration date is one (1) year from date of receipt.

Images



Western Blot

Western Blot of Rabbit anti-RHOT1 antibody. Lane A: rat brain tissue lysate. Primary antibody: RHOT1 antibody at 1 $\mu\text{g}/\text{mL}$ overnight at 4C. Secondary antibody: Goat anti-Rabbit secondary antibody. Block: 5% BLOTTO. Predicted/Observed size: 76 kDa, 78 kDa for RHOT1.

Disclaimer

This product is for research use only and is not intended for therapeutic or diagnostic applications. Please contact a technical service representative for more information. All products of animal origin manufactured by Rockland Immunochemicals are derived from starting materials of North American origin. Collection was performed in United States Department of Agriculture (USDA) inspected facilities and all materials have been inspected and certified to be free of disease and suitable for exportation. All properties listed are typical characteristics and are not specifications. All suggestions and data are offered in good faith but without guarantee as conditions and methods of use of our products are beyond our control. All claims must be made within 30 days following the date of delivery. The prospective user must determine the suitability of our materials before adopting them on a commercial scale. Suggested uses of our products are not recommendations to use our products in violation of any patent or as a license under any patent of Rockland Immunochemicals, Inc. If you require a commercial license to use this material and do not have one, then return this material, unopened to: Rockland Inc., P.O. BOX 5199, Limerick, Pennsylvania, USA.