

Datasheet for 600-401-DY4 RHBDD1 Antibody

Overview

Description:	Anti-RHBDD1 (RABBIT) Antibody - 600-401-DY4
Item No.:	600-401-DY4
Size:	100 µg
Applications:	ELISA, WB
Reactivity:	Human, Mouse
Host Species:	Rabbit

Product Details

Background:	The Rhomboid family of proteins is made up of several widely conserved polytopic membrane serine proteases that play roles in growth and development. RHBDD1 is highly expressed in the testis and is involved in the cleavage of BIK, a proapoptotic member of the Bcl-2 family. Overexpression or suppression by RNAi of RHBDD1 in 293 cells will reduce or enhance BIK-mediated apoptosis, respectively, demonstrating that RHBDD1 modulates BIK-mediated apoptotic activity. In GC-1 cells, a spermatogonia cell line that can differentiate into spermatids within the seminiferous tubules, suppression of RHBDD1 expression by RNAi caused the cells to lose the ability to survive and differentiate in mouse seminiferous tubules, suggesting that RHBDD1 may be associated with mammalian spermatogenesis.
Synonyms:	RHBDD1 Antibody, RRP4, RHBDL4, HSD-50, HSD50, Rhomboid-related protein 4, Rhomboid domain-containing protein 1, RRP4
Host Species:	Rabbit
Clonality:	Polyclonal
Format:	IgG

Target Details

Gene Name:	RHBDD1
Reactivity:	Human, Mouse
Immunogen Type:	Conjugated Peptide

Immunogen:	Anti-RHBDD1 antibody was prepared from whole rabbit serum produced by repeated immunizations with a 14 amino acid synthetic peptide from near the C-terminus of human RHBDD1.
Purity/Specificity:	Anti-RHBDD1 Antibody was affinity purified from monospecific antiserum by immunoaffinity chromatography. Cross reactivity with RHBDD1 from other sources has not been determined.
Relevant Links:	<ul style="list-style-type: none">• UniProtKB - Q8TEB9• GeneID - 84236• NCBI - AAI01265

Application Details

Tested Applications:	ELISA, WB
Application Note:	Anti-RHBDD1 Antibody has been tested for use in ELISA and Western Blotting. Specific conditions for reactivity should be optimized by the end user. Expect a band at approximately 36 kDa in Western Blots of specific cell lysates and tissues.
Assay Dilutions:	All assays should be optimized by the user. Recommended dilutions (if any) may be listed below.
ELISA:	1:10,000
WB:	1 µg/mL

Formulation

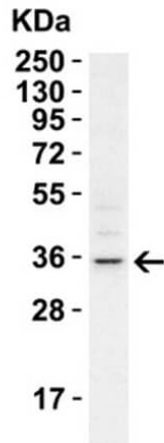
Physical State:	Liquid (sterile filtered)
Concentration:	1 mg/mL by UV absorbance at 280 nm
Buffer:	0.01 M Sodium Phosphate, 0.25 M Sodium Chloride, pH 7.2
Preservative:	0.02% (w/v) Sodium Azide
Stabilizer:	None

Shipping & Handling

Shipping Condition:	Dry Ice
Storage Condition:	Store vial at -20° C prior to opening. Aliquot contents and freeze at -20° C or below for extended storage. Avoid cycles of freezing and thawing. Centrifuge product if not completely clear after standing at room temperature. This product is stable for several weeks at 4° C as an undiluted liquid. Dilute only prior to immediate use.

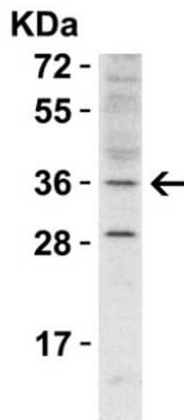
Expiration: Expiration date is one (1) year from date of receipt.

Images



Western Blot

Western Blot of Rabbit Anti-RHBDD1 Antibody. Lane 1: A549 Whole cell lysate [15 µg]. Primary Antibody: Anti-RHBDD1 at 1µg/ml for 1hr at RT Blocking in 5% Blotto/TBST. Secondary Antibody: Goat Anti-Rabbit IgG HRP conjugate at 1:10000 dilution. Predicted MW: 36kDa. Exposure: 1 min.



Western Blot

Western Blot of Rabbit Anti-RHBDD1 Antibody. Lane 1: Mouse Heart Lysate [15 µg]. Primary Antibody: Anti-RHBDD1 at 1µg/ml for 1hr at RT in 5% Blotto/TBST. Secondary Antibody: Goat Anti-Rabbit IgG HRP conjugate at 1:10000 dilution. Predicted MW: 36kDa. Exposure: 5 min.

Disclaimer

This product is for research use only and is not intended for therapeutic or diagnostic applications. Please contact a technical service representative for more information. All products of animal origin manufactured by Rockland Immunochemicals are derived from starting materials of North American origin. Collection was performed in United States Department of Agriculture (USDA) inspected facilities and all materials have been inspected and certified to be free of disease and suitable for exportation. All properties listed are typical characteristics and are not specifications. All suggestions and data are offered in good faith but without guarantee as conditions and methods of use of our products are beyond our control. All claims must be made within 30 days following the date of delivery. The prospective user must determine the suitability of our materials before adopting them on a commercial scale. Suggested uses of our products are not recommendations to use our products in violation of any patent or as a license under any patent of Rockland Immunochemicals, Inc. If you require a commercial license to use this material and do not have one, then return this material, unopened to: Rockland Inc., P.O. BOX 5199, Limerick, Pennsylvania, USA.