

Datasheet for 600-401-DX5**REEP3 Antibody****Overview**

Description:	Anti-REEP3 (RABBIT) Antibody - 600-401-DX5
Item No.:	600-401-DX5
Size:	100 µg
Applications:	ELISA, IF, IHC, WB
Reactivity:	Human, Mouse, Rat
Host Species:	Rabbit

Product Details

Background:	Mammalian odorant receptors require accessory proteins such as RTP1 and RTP2 for functional cell surface expression. Receptor expression-enhancing protein (REEP) family members are transmembrane proteins which interact with odorant receptor proteins and may enhance the odorant receptor responses to odorants. Recently studies have shown other chemosensory receptors such as bitter taste receptors are also influenced by RTP and REEP family members. REEP3 has also been suggested as a novel candidate gene for autism and as a loci influencing the plasma levels of the liver enzyme alkaline phosphatase.
Synonyms:	REEP3 Antibody, C10orf74, C10orf74, Receptor expression-enhancing protein 3
Host Species:	Rabbit
Clonality:	Polyclonal
Format:	IgG

Target Details

Gene Name:	REEP3
Reactivity:	Human, Mouse, Rat
Immunogen Type:	Conjugated Peptide
Immunogen:	Anti-REEP3 antibody was prepared from whole rabbit serum produced by repeated immunizations with a 17 amino acid synthetic peptide near the C-terminus of human REEP3.

Purity/Specificity: Anti-REEP3 Antibody was affinity purified from monospecific antiserum by immunoaffinity chromatography. Cross reactivity with REEP3 from other sources has not been determined.

Relevant Links:

- [UniProtKB - Q6NUK4](#)
- [GeneID - 221035](#)
- [NCBI - NP_001001330](#)

Application Details

Tested Applications: ELISA, IF, IHC, WB

Application Note: Anti-REEP3 Antibody has been tested for use in ELISA, Western Blotting, Immunohistochemistry and Immunofluorescence. Specific conditions for reactivity should be optimized by the end user. Expect a band at approximately 29 kDa in Western Blots of specific cell lysates and tissues.

Assay Dilutions: All assays should be optimized by the user. Recommended dilutions (if any) may be listed below.

ELISA: 1:10,000

IF: 20 µg/mL

IHC: 5 µg/mL

WB: 1 µg/mL

Formulation

Physical State: Liquid (sterile filtered)

Concentration: 1 mg/mL by UV absorbance at 280 nm

Buffer: 0.01 M Sodium Phosphate, 0.25 M Sodium Chloride, pH 7.2

Preservative: 0.02% (w/v) Sodium Azide

Stabilizer: None

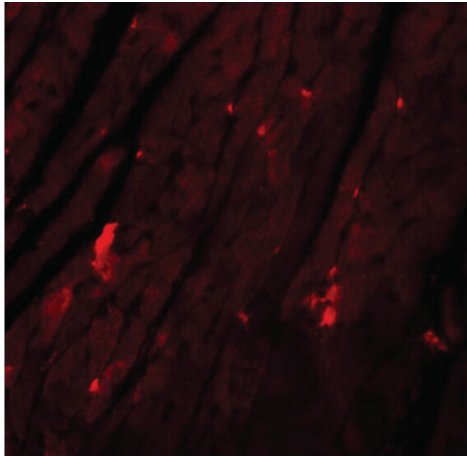
Shipping & Handling

Shipping Condition: Dry Ice

Storage Condition: Store vial at -20° C prior to opening. Aliquot contents and freeze at -20° C or below for extended storage. Avoid cycles of freezing and thawing. Centrifuge product if not completely clear after standing at room temperature. This product is stable for several weeks at 4° C as an undiluted liquid. Dilute only prior to immediate use.

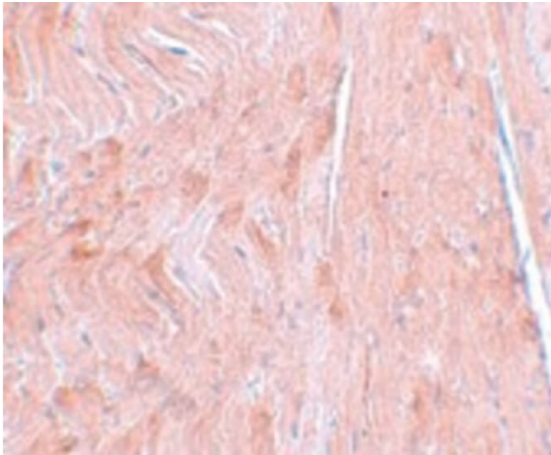
Expiration: Expiration date is one (1) year from date of receipt.

Images



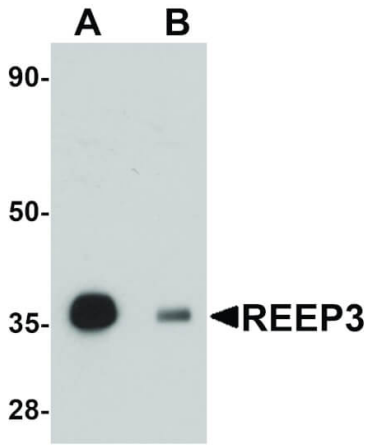
Immunofluorescence Microscopy

Immunofluorescence Microscopy of REEP3 antibody.
Tissue: Mouse heart tissue. Fixation: 0.5% PFA. Antigen retrieval: not required. Primary antibody: REEP3 antibody at 20 $\mu\text{g}/\text{mL}$ for 1 h at RT. Secondary antibody: Fluorescein rabbit secondary antibody at 1:10,000 for 45 min at RT. Localization: REEP3 is a membrane protein. Staining: REEP3 as red fluorescent signal.



Immunohistochemistry

Immunohistochemistry of REEP3 antibody. Tissue: Mouse heart tissue. Fixation: formalin fixed paraffin embedded. Antigen retrieval: not required. Primary antibody: REEP3 antibody at 5 $\mu\text{g}/\text{mL}$ for 1 h at RT. Secondary antibody: Peroxidase rabbit secondary antibody at 1:10,000 for 45 min at RT. Localization: REEP3 is a membrane protein. Staining: REEP3 as precipitated pink signal with purple nuclear counterstain.

**Western Blot**

Western Blot of REEP3 antibody. Lane 1: Rat heart tissue lysate in the absence of blocking peptide. Lane 2: Rat heart tissue lysate in the presence of blocking peptide. Primary Antibody: with REEP3 antibody at 1 $\mu\text{g}/\text{mL}$. Secondary antibody: Peroxidase rabbit secondary antibody at 1:10,000 for 45 min at RT. Block: 5% BLOTTO overnight at 4°C. Predicted/Observed size: 29 kDa, 35 kDa for REEP3. Other band(s): REEP3 splice variants and isoforms.

Disclaimer

This product is for research use only and is not intended for therapeutic or diagnostic applications. Please contact a technical service representative for more information. All products of animal origin manufactured by Rockland Immunochemicals are derived from starting materials of North American origin. Collection was performed in United States Department of Agriculture (USDA) inspected facilities and all materials have been inspected and certified to be free of disease and suitable for exportation. All properties listed are typical characteristics and are not specifications. All suggestions and data are offered in good faith but without guarantee as conditions and methods of use of our products are beyond our control. All claims must be made within 30 days following the date of delivery. The prospective user must determine the suitability of our materials before adopting them on a commercial scale. Suggested uses of our products are not recommendations to use our products in violation of any patent or as a license under any patent of Rockland Immunochemicals, Inc. If you require a commercial license to use this material and do not have one, then return this material, unopened to: Rockland Inc., P.O. BOX 5199, Limerick, Pennsylvania, USA.