

Datasheet for 600-401-DX1 RBM35B Antibody

Overview

Description:	Anti-RBM35B (RABBIT) Antibody - 600-401-DX1
Item No.:	600-401-DX1
Size:	100 µg
Applications:	ELISA, IF, IHC, WB
Reactivity:	Human, Mouse
Host Species:	Rabbit

Product Details

Background:	RBM35A, also known as ESRP2, is a mRNA splicing factor that with its related protein RBM35A (ESRP1) are coordinators of an epithelial cell-type-specific splicing program. Both RBM35B and RBM35A are involved in posttranscriptional regulation of a number of genes such as FGFR2, CD44, CTNND1, and ENAH by exerting a differential effect on protein translation via 5' UTRs of mRNAs, suggesting that these proteins are global regulators of an epithelial regulatory network. Loss of this global ESRP-regulated epithelial splicing programmer induces the phenotypic changes in cell morphology that are observed during the epithelial-mesenchymal transition.
Synonyms:	RBM35B Antibody, RBM35B, RBM35B, PP7059, Epithelial splicing regulatory protein 2, RNA-binding motif protein 35B
Host Species:	Rabbit
Clonality:	Polyclonal
Format:	IgG

Target Details

Gene Name:	ESRP2
Reactivity:	Human, Mouse
Immunogen Type:	Conjugated Peptide
Immunogen:	Anti-RBM35B antibody was prepared from whole rabbit serum produced by repeated immunizations with a 17 amino acid synthetic peptide near the C-terminus of human RBM35B.

Purity/Specificity: Anti-RBM35B Antibody was affinity purified from monospecific antiserum by immunoaffinity chromatography. RBM35B antibody is predicted to not cross-react with other RBM35/ESRP family members. At least three isoforms of RBM35B are known to exist; this antibody will detect all three.

Relevant Links:

- [UniProtKB - Q9H6T0](#)
- [GeneID - 80004](#)
- [NCBI - NP_079215](#)

Application Details

Tested Applications: ELISA, IF, IHC, WB

Application Note: Anti-RBM35B Antibody has been tested for use in ELISA, Western Blotting, Immunohistochemistry and Immunofluorescence. Specific conditions for reactivity should be optimized by the end user. Expect a band at approximately 78 kDa in Western Blots of specific cell lysates and tissues.

Assay Dilutions: All assays should be optimized by the user. Recommended dilutions (if any) may be listed below.

ELISA: 1:10,000

IF: 20 µg/mL

IHC: 5 µg/mL

WB: 1 µg/mL

Formulation

Physical State: Liquid (sterile filtered)

Concentration: 1 mg/mL by UV absorbance at 280 nm

Buffer: 0.01 M Sodium Phosphate, 0.25 M Sodium Chloride, pH 7.2

Preservative: 0.02% (w/v) Sodium Azide

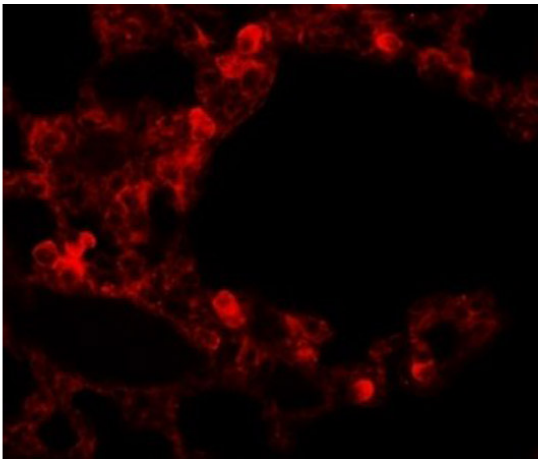
Stabilizer: None

Shipping & Handling

Shipping Condition: Dry Ice

Storage Condition:	Store vial at -20° C prior to opening. Aliquot contents and freeze at -20° C or below for extended storage. Avoid cycles of freezing and thawing. Centrifuge product if not completely clear after standing at room temperature. This product is stable for several weeks at 4° C as an undiluted liquid. Dilute only prior to immediate use.
Expiration:	Expiration date is one (1) year from date of receipt.

Images

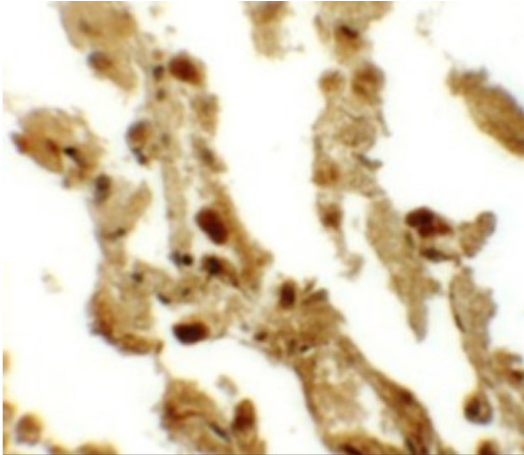


Immunofluorescence Microscopy

Immunofluorescence of RBM35B.

Tissue: human lung tissue cells.

Primary Antibody: RBM35B antibody at 20 µg/mL.

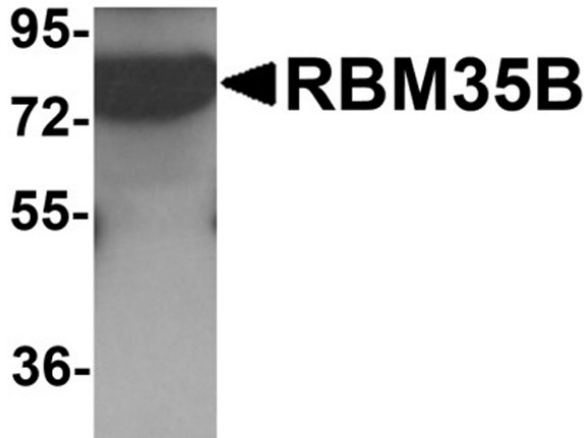


Immunohistochemistry

Immunohistochemistry of RBM35B.

Tissue: human lung tissue.

Primary Antibody: RBM35B antibody at 5 µg/mL.

**Western Blot**

Western blot analysis of RBM35B.

Load: human lung tissue lysate.

Primary Antibody: RBM35B antibody at 1 µg/mL.

Disclaimer

This product is for research use only and is not intended for therapeutic or diagnostic applications. Please contact a technical service representative for more information. All products of animal origin manufactured by Rockland Immunochemicals are derived from starting materials of North American origin. Collection was performed in United States Department of Agriculture (USDA) inspected facilities and all materials have been inspected and certified to be free of disease and suitable for exportation. All properties listed are typical characteristics and are not specifications. All suggestions and data are offered in good faith but without guarantee as conditions and methods of use of our products are beyond our control. All claims must be made within 30 days following the date of delivery. The prospective user must determine the suitability of our materials before adopting them on a commercial scale. Suggested uses of our products are not recommendations to use our products in violation of any patent or as a license under any patent of Rockland Immunochemicals, Inc. If you require a commercial license to use this material and do not have one, then return this material, unopened to: Rockland Inc., P.O. BOX 5199, Limerick, Pennsylvania, USA.