

**Datasheet for 600-401-DX0****RBM35A Antibody****Overview**

<b>Description:</b>	Anti-RBM35A (RABBIT) Antibody - 600-401-DX0
<b>Item No.:</b>	600-401-DX0
<b>Size:</b>	100 µg
<b>Applications:</b>	ELISA, IF, IHC, WB
<b>Reactivity:</b>	Human, Mouse, Rat
<b>Host Species:</b>	Rabbit

**Product Details**

<b>Background:</b>	RBM35A, also known as ESRP1, is a mRNA splicing factor that with its related protein RBM35B (ESRP2) are coordinators of an epithelial cell-type-specific splicing program. RBM35A contains three putative RNA recognition motifs and acts by directly binding specific sequences in mRNAs. RBM35A is involved in posttranscriptional regulation of a number of genes such as FGFR2, CD44, CTNND1, and ENAH by exerting a differential effect on protein translation via 5' UTRs of mRNAs. Other recent studies have shown that RBM35A may also act as a novel tumor suppressor.
<b>Synonyms:</b>	RBM35A Antibody, RBM35A, RMB35A, RBM35A, Epithelial splicing regulatory protein 1, RNA-binding motif protein 35A
<b>Host Species:</b>	Rabbit
<b>Clonality:</b>	Polyclonal
<b>Format:</b>	IgG

**Target Details**

<b>Gene Name:</b>	ESRP1
<b>Reactivity:</b>	Human, Mouse, Rat
<b>Immunogen Type:</b>	Conjugated Peptide
<b>Immunogen:</b>	Anti-RBM35A antibody was prepared from whole rabbit serum produced by repeated immunizations with a 18 amino acid synthetic peptide near the N-terminus of human RBM35A.

**Purity/Specificity:** Anti-RBM35A Antibody was affinity purified from monospecific antiserum by immunoaffinity chromatography. RBM35A antibody is predicted to not cross-react with other RBM35/ESRP family members. At least five isoforms of RBM35A are known to exist; this antibody will detect all five.

**Relevant Links:**

- [UniProtKB - Q6NXG1](#)
- [GeneID - 54845](#)
- [NCBI - NP\\_001030087](#)

## Application Details

**Tested Applications:** ELISA, IF, IHC, WB

**Application Note:** Anti-RBM35A Antibody has been tested for use in ELISA, Western Blotting, Immunohistochemistry and Immunofluorescence. Specific conditions for reactivity should be optimized by the end user. Expect a band at approximately 76 kDa in Western Blots of specific cell lysates and tissues.

**Assay Dilutions:** All assays should be optimized by the user. Recommended dilutions (if any) may be listed below.

**ELISA:** 1:5,000

**IF:** 20 µg/mL

**IHC:** 2.5 µg/mL

**WB:** .5 µg/mL

## Formulation

**Physical State:** Liquid (sterile filtered)

**Concentration:** 1 mg/mL by UV absorbance at 280 nm

**Buffer:** 0.01 M Sodium Phosphate, 0.25 M Sodium Chloride, pH 7.2

**Preservative:** 0.02% (w/v) Sodium Azide

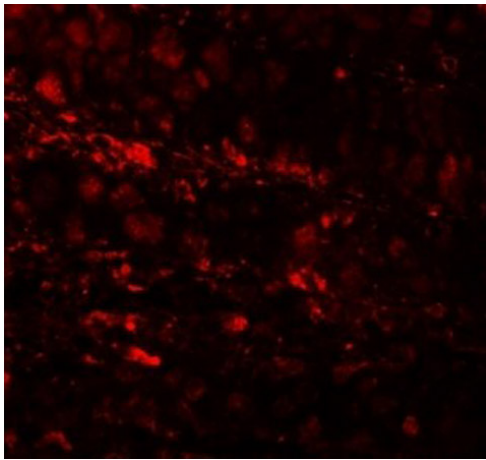
**Stabilizer:** None

## Shipping & Handling

**Shipping Condition:** Dry Ice

<b>Storage Condition:</b>	Store vial at -20° C prior to opening. Aliquot contents and freeze at -20° C or below for extended storage. Avoid cycles of freezing and thawing. Centrifuge product if not completely clear after standing at room temperature. This product is stable for several weeks at 4° C as an undiluted liquid. Dilute only prior to immediate use.
<b>Expiration:</b>	Expiration date is one (1) year from date of receipt.

## Images

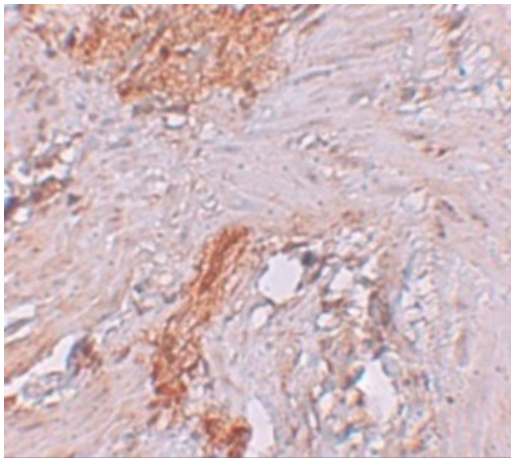


### Immunofluorescence Microscopy

Immunofluorescence of RBM35A.

Tissue: human colon tissue cells.

Primary Antibody: RBM35A antibody at 20 µg/mL.

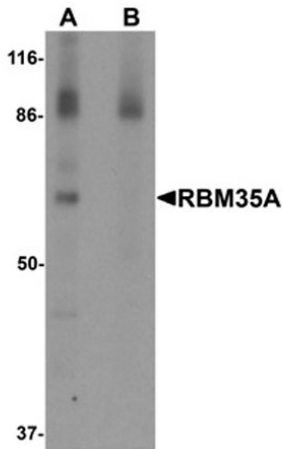


### Immunohistochemistry

Immunohistochemistry of RBM35A.

Tissue: human colon tissue.

Primary Antibody: RBM35A antibody at 2.5 µg/mL.

**Western Blot**

Western blot analysis of RBM35A.

Load: rat colon tissue lysate.

Primary Antibody: RBM35A antibody at 0.5  $\mu\text{g}/\text{mL}$  in (A) the absence and (B) the presence of blocking peptide.

**Disclaimer**

This product is for research use only and is not intended for therapeutic or diagnostic applications. Please contact a technical service representative for more information. All products of animal origin manufactured by Rockland Immunochemicals are derived from starting materials of North American origin. Collection was performed in United States Department of Agriculture (USDA) inspected facilities and all materials have been inspected and certified to be free of disease and suitable for exportation. All properties listed are typical characteristics and are not specifications. All suggestions and data are offered in good faith but without guarantee as conditions and methods of use of our products are beyond our control. All claims must be made within 30 days following the date of delivery. The prospective user must determine the suitability of our materials before adopting them on a commercial scale. Suggested uses of our products are not recommendations to use our products in violation of any patent or as a license under any patent of Rockland Immunochemicals, Inc. If you require a commercial license to use this material and do not have one, then return this material, unopened to: Rockland Inc., P.O. BOX 5199, Limerick, Pennsylvania, USA.