

**Datasheet for 600-401-DW1****RANBP10 Antibody****Overview**

<b>Description:</b>	Anti-RANBP10 (RABBIT) Antibody - 600-401-DW1
<b>Item No.:</b>	600-401-DW1
<b>Size:</b>	100 µg
<b>Applications:</b>	ELISA, IF, IHC, WB
<b>Reactivity:</b>	Human
<b>Host Species:</b>	Rabbit

**Product Details**

**Background:** The RAN binding protein 10 (RANBP10) is a cytoplasmic guanine nucleotide exchange factor that shares high sequence similarity to the MET-interacting protein RANBP9. RANBP10 is expressed in the cytoplasm of mature megakaryocytes (MKs) and platelets where it localizes to polymerized noncentrosomal microtubules. RANBP10 possesses guanine nucleotide exchange factor activity towards RAN, a GTPase involved in nucleocytoplasmic traffic, spindle formation at mitosis, and nuclear envelope assembly during telophase, suggesting that RANBP10 may also be involved in these activities. RANBP10 depletion in vitro caused the disturbance of polymerized filaments in MKs and platelets in RANBP10-null mice exhibited disorders in microtubule filament numbers and localization, indicating that RANBP10 may play a significant role in maintaining microtubule dynamics.

<b>Synonyms:</b>	RANBP10 Antibody, KIAA1464, Ran-binding protein 10, RanBP10
<b>Host Species:</b>	Rabbit
<b>Clonality:</b>	Polyclonal
<b>Format:</b>	IgG

**Target Details**

<b>Gene Name:</b>	RANBP10
<b>Reactivity:</b>	Human
<b>Immunogen Type:</b>	Conjugated Peptide

<b>Immunogen:</b>	Anti-RANBP10 antibody was prepared from whole rabbit serum produced by repeated immunizations with a 15 amino acid synthetic peptide near the internal region of human RANBP10.
<b>Purity/Specificity:</b>	Anti-RANBP10 Antibody was affinity purified from monospecific antiserum by immunoaffinity chromatography. Cross reactivity with RANBP10 from other sources has not been determined.
<b>Relevant Links:</b>	<ul style="list-style-type: none"><li>• <a href="#">UniProtKB - Q6VN20</a></li><li>• <a href="#">GeneID - 57610</a></li><li>• <a href="#">NCBI - EAW83167</a></li></ul>

## Application Details

<b>Tested Applications:</b>	ELISA, IF, IHC, WB
<b>Application Note:</b>	Anti-RANBP10 Antibody has been tested for use in ELISA, Western Blotting, Immunohistochemistry and Immunofluorescence. Specific conditions for reactivity should be optimized by the end user. Expect a band at approximately 68 kDa in Western Blots of specific cell lysates and tissues.
<b>Assay Dilutions:</b>	All assays should be optimized by the user. Recommended dilutions (if any) may be listed below.
<b>ELISA:</b>	1:10,000 - 1:20,000
<b>IF:</b>	20 µg/mL
<b>IHC:</b>	5 µg/mL
<b>WB:</b>	1-2 µg/mL

## Formulation

<b>Physical State:</b>	Liquid (sterile filtered)
<b>Concentration:</b>	1 mg/mL by UV absorbance at 280 nm
<b>Buffer:</b>	0.01 M Sodium Phosphate, 0.25 M Sodium Chloride, pH 7.2
<b>Preservative:</b>	0.02% (w/v) Sodium Azide
<b>Stabilizer:</b>	None

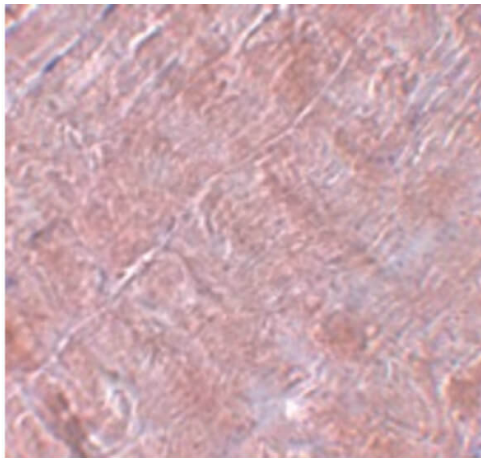
## Shipping & Handling

<b>Shipping Condition:</b>	Dry Ice
----------------------------	---------

**Storage Condition:** Store vial at -20° C prior to opening. Aliquot contents and freeze at -20° C or below for extended storage. Avoid cycles of freezing and thawing. Centrifuge product if not completely clear after standing at room temperature. This product is stable for several weeks at 4° C as an undiluted liquid. Dilute only prior to immediate use.

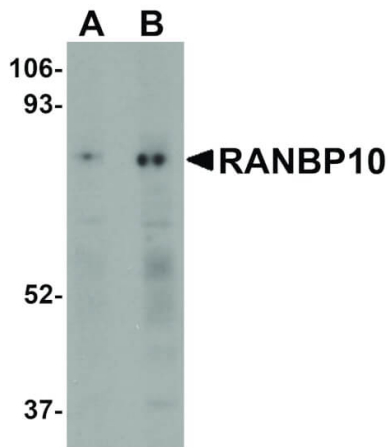
**Expiration:** Expiration date is one (1) year from date of receipt.

## Images



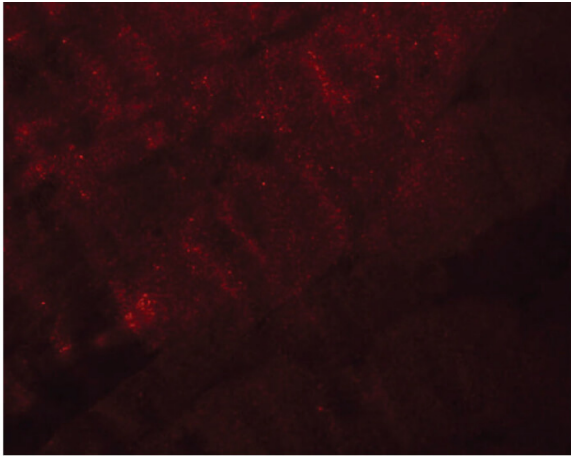
### Immunohistochemistry

Immunohistochemistry of RANBP10 antibody. Tissue: Human skeletal muscle tissue. Fixation: formalin fixed paraffin embedded. Antigen retrieval: not required. Primary antibody: RANBP10 antibody at 5 µg/mL for 1 h at RT. Secondary antibody: Peroxidase rabbit secondary antibody at 1:10,000 for 45 min at RT. Localization: RANBP10 is nuclear and cytoplasmic. Staining: RANBP10 as precipitated brown signal with blue counterstain.



### Western Blot

Western Blot of RANBP10 antibody. Lane 1: Human skeletal muscle tissue lysate with RANBP10 antibody at 1 µg/mL. Lane 2: Human skeletal muscle tissue lysate with RANBP10 antibody at 2 µg/mL. Secondary antibody: Peroxidase rabbit secondary antibody at 1:10,000 for 45 min at RT. Block: 5% BLOTTO overnight at 4°C. Predicted/Observed size: 68 kDa, 85 kDa for RANBP10. Other band(s): RANBP10 splice variants and isoforms.

**Immunofluorescence Microscopy**

Immunofluorescence Microscopy of RANBP10 antibody.  
Tissue: Mouse skeletal muscle tissue. Fixation: 0.5% PFA.  
Antigen retrieval: not required. Primary antibody: RANBP10 antibody at 20 µg/mL for 1 h at RT. Secondary antibody: Fluorescein rabbit secondary antibody at 1:10,000 for 45 min at RT. Localization: RANBP10 is nuclear and cytoplasmic.  
Staining: RANBP10 as red fluorescent signal.

**Disclaimer**

This product is for research use only and is not intended for therapeutic or diagnostic applications. Please contact a technical service representative for more information. All products of animal origin manufactured by Rockland Immunochemicals are derived from starting materials of North American origin. Collection was performed in United States Department of Agriculture (USDA) inspected facilities and all materials have been inspected and certified to be free of disease and suitable for exportation. All properties listed are typical characteristics and are not specifications. All suggestions and data are offered in good faith but without guarantee as conditions and methods of use of our products are beyond our control. All claims must be made within 30 days following the date of delivery. The prospective user must determine the suitability of our materials before adopting them on a commercial scale. Suggested uses of our products are not recommendations to use our products in violation of any patent or as a license under any patent of Rockland Immunochemicals, Inc. If you require a commercial license to use this material and do not have one, then return this material, unopened to: Rockland Inc., P.O. BOX 5199, Limerick, Pennsylvania, USA.