

Datasheet for 600-401-DU1 PTCHD2 Antibody

Overview

Description:	Anti-PTCHD2 (RABBIT) Antibody - 600-401-DU1
Item No.:	600-401-DU1
Size:	100 µg
Applications:	ELISA, IHC
Reactivity:	Human
Host Species:	Rabbit

Product Details

Background:	PTCHD2, also known as DISP3, is the third of three known homologs of the <i>D. melanogaster</i> protein Dispatched. It is a multi-transmembrane protein containing two PTCH/DISP domains and is thought to be involved in the release of lipid-anchored secreted proteins. Like DISP1 and DISP2, DISP3 has been implicated in signaling pathways during embryogenesis, tissue regeneration, and carcinogenesis. It is highly expressed in Purkinje cells, hippocampal neurons, and retinal ganglion cells. Recently, it has been shown that PTCHD2 localizes within the endoplasmic reticulum and colocalizes with cholesterol, and given that its expression is regulated by thyroid hormone (T3), it has been suggested that DISP3 may be a link between thyroid hormone and cholesterol metabolism.
Synonyms:	PTCHD2 Antibody, DISP3, KIAA1337, Patched domain-containing protein 2, Protein dispatched homolog 3
Host Species:	Rabbit
Clonality:	Polyclonal
Format:	IgG

Target Details

Gene Name:	DISP3
Reactivity:	Human
Immunogen Type:	Conjugated Peptide

Immunogen:	Anti-PTCHD2 antibody was prepared from whole rabbit serum produced by repeated immunizations with a 14 amino acid synthetic peptide from near the C-terminus of human PTCHD2.
Purity/Specificity:	Anti-PTCHD2 Antibody was affinity purified from monospecific antiserum by immunoaffinity chromatography. At least two isoforms of PTCHD2 are known to exist. This antibody is specific for PTCHD2 and will not recognize the other DISP family of proteins.
Relevant Links:	<ul style="list-style-type: none">• UniProtKB - Q9P2K9• GeneID - 57540• NCBI - Q9P2K9

Application Details

Tested Applications:	ELISA, IHC
Application Note:	Anti-PTCHD2 Antibody has been tested for use in ELISA and Immunohistochemistry. Specific conditions for reactivity should be optimized by the end user. Expect a band at approximately 153 kDa in Western Blots of specific cell lysates and tissues.
Assay Dilutions:	All assays should be optimized by the user. Recommended dilutions (if any) may be listed below.
ELISA:	User Optimized
IHC:	5 µg/mL

Formulation

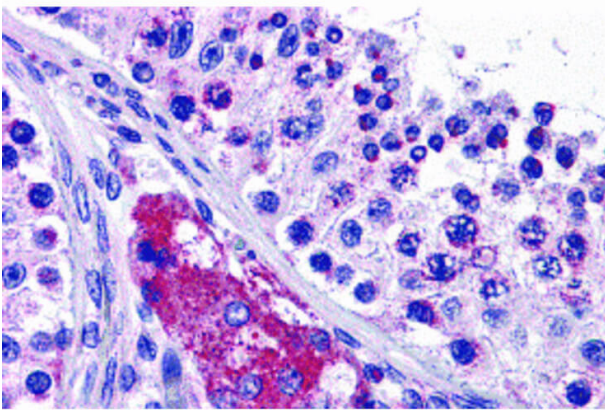
Physical State:	Liquid (sterile filtered)
Concentration:	1 mg/mL by UV absorbance at 280 nm
Buffer:	0.01 M Sodium Phosphate, 0.25 M Sodium Chloride, pH 7.2
Preservative:	0.02% (w/v) Sodium Azide
Stabilizer:	None

Shipping & Handling

Shipping Condition:	Dry Ice
----------------------------	---------

Storage Condition:	Store vial at -20° C prior to opening. Aliquot contents and freeze at -20° C or below for extended storage. Avoid cycles of freezing and thawing. Centrifuge product if not completely clear after standing at room temperature. This product is stable for several weeks at 4° C as an undiluted liquid. Dilute only prior to immediate use.
Expiration:	Expiration date is one (1) year from date of receipt.

Images



Immunohistochemistry

Immunohistochemistry of PTCHD2 antibody. Tissue: Human testis tissue. Fixation: formalin fixed paraffin embedded. Antigen retrieval: not required. Primary antibody: PTCHD2 antibody at 5 µg/mL for 1 h at RT. Secondary antibody: Peroxidase rabbit secondary antibody at 1:10,000 for 45 min at RT. Localization: PTCHD2 is nuclear and occasionally cytoplasmic. Staining: PTCHD2 as a precipitated red signal with hematoxylin purple nuclear counterstain.

Disclaimer

This product is for research use only and is not intended for therapeutic or diagnostic applications. Please contact a technical service representative for more information. All products of animal origin manufactured by Rockland Immunochemicals are derived from starting materials of North American origin. Collection was performed in United States Department of Agriculture (USDA) inspected facilities and all materials have been inspected and certified to be free of disease and suitable for exportation. All properties listed are typical characteristics and are not specifications. All suggestions and data are offered in good faith but without guarantee as conditions and methods of use of our products are beyond our control. All claims must be made within 30 days following the date of delivery. The prospective user must determine the suitability of our materials before adopting them on a commercial scale. Suggested uses of our products are not recommendations to use our products in violation of any patent or as a license under any patent of Rockland Immunochemicals, Inc. If you require a commercial license to use this material and do not have one, then return this material, unopened to: Rockland Inc., P.O. BOX 5199, Limerick, Pennsylvania, USA.