

Datasheet for 600-401-DT6**PRR5L Antibody****Overview**

Description:	Anti-PRR5L (RABBIT) Antibody - 600-401-DT6
Item No.:	600-401-DT6
Size:	100 µg
Applications:	ELISA, IF, IHC, WB
Reactivity:	Human, Mouse
Host Species:	Rabbit

Product Details

Background:	Proline-rich protein 5-like (PRR5L), also known as Protor-2, is structurally similar to PRR5 and also binds to the mTOR complex 2 (mTORC2). PRR5L is not required for mTORC2 integrity or kinase activity, but dissociates from mTORC2 upon knockdown of tuberous sclerosis complex 1 (TSC1) and TSC2. Knockdown of PRR5L reduced apoptosis in mTORC2 deficient cells as well as cells where mTOR was active, suggesting that mTORC2-dissociated PRR5L may promote apoptosis, and thus play a role in the balance between cell growth and cell death.
Synonyms:	PRR5L Antibody, PROTOR2, PROTOR2, Proline-rich protein 5-like, Protein observed with Rictor-2, Protor-2
Host Species:	Rabbit
Clonality:	Polyclonal
Format:	IgG

Target Details

Gene Name:	PRR5L
Reactivity:	Human, Mouse
Immunogen Type:	Conjugated Peptide
Immunogen:	Anti-PRR5L antibody was prepared from whole rabbit serum produced by repeated immunizations with a 17 amino acid synthetic peptide near the internal region of human PRR5L.

Purity/Specificity: Anti-PRR5L Antibody was affinity purified from monospecific antiserum by immunoaffinity chromatography. At least three isoforms of PRR5L are known to exist; this antibody will recognize only isoforms a and b. PRR5L antibody will not cross-react with PPR5.

Relevant Links:

- [UniProtKB - Q6MZQ0](#)
- [GeneID - 79899](#)
- [NCBI - NP_001153639](#)

Application Details

Tested Applications: ELISA, IF, IHC, WB

Application Note: Anti-PRR5L Antibody has been tested for use in ELISA, Western Blotting, Immunocytochemistry and Immunofluorescence. Specific conditions for reactivity should be optimized by the end user. Expect a band at approximately 41 kDa in Western Blots of specific cell lysates and tissues.

Assay Dilutions: All assays should be optimized by the user. Recommended dilutions (if any) may be listed below.

ELISA: 1:10,000

IF: 20 µg/mL

WB: 1 µg/mL

Formulation

Physical State: Liquid (sterile filtered)

Concentration: 1 mg/mL by UV absorbance at 280 nm

Buffer: 0.01 M Sodium Phosphate, 0.25 M Sodium Chloride, pH 7.2

Preservative: 0.02% (w/v) Sodium Azide

Stabilizer: None

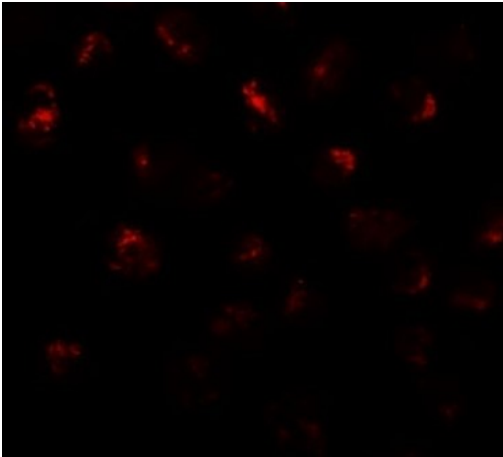
Shipping & Handling

Shipping Condition: Dry Ice

Storage Condition: Store vial at -20° C prior to opening. Aliquot contents and freeze at -20° C or below for extended storage. Avoid cycles of freezing and thawing. Centrifuge product if not completely clear after standing at room temperature. This product is stable for several weeks at 4° C as an undiluted liquid. Dilute only prior to immediate use.

Expiration: Expiration date is one (1) year from date of receipt.

Images



Immunofluorescence Microscopy

Immunofluorescence of PRR5L.

Cell: 3T3 cells.

Primary Antibody: PRR5L antibody at 20 $\mu\text{g}/\text{mL}$.

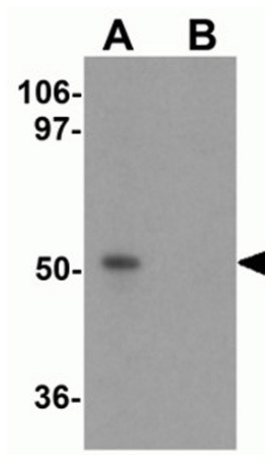


Immunocytochemistry

Immunocytochemistry of PRR5L.

Cell: 293 cells.

Primary Antibody: PRR5L antibody at 10 $\mu\text{g}/\text{mL}$.



Western Blot

Western blot analysis of PRR5L.

Load: 3T3 cell lysate.

Primary Antibody: PRR5L antibody at 1 $\mu\text{g}/\text{mL}$ in (A) the absence and (B) the presence of blocking peptide.

Disclaimer

This product is for research use only and is not intended for therapeutic or diagnostic applications. Please contact a technical service representative for more information. All products of animal origin manufactured by Rockland Immunochemicals are derived from starting materials of North American origin. Collection was performed in United States Department of Agriculture (USDA) inspected facilities and all materials have been inspected and certified to be free of disease and suitable for exportation. All properties listed are typical characteristics and are not specifications. All suggestions and data are offered in good faith but without guarantee as conditions and methods of use of our products are beyond our control. All claims must be made within 30 days following the date of delivery. The prospective user must determine the suitability of our materials before adopting them on a commercial scale. Suggested uses of our products are not recommendations to use our products in violation of any patent or as a license under any patent of Rockland Immunochemicals, Inc. If you require a commercial license to use this material and do not have one, then return this material, unopened to: Rockland Inc., P.O. BOX 5199, Limerick, Pennsylvania, USA.