

Datasheet for 600-401-DT1

Protein Kinase C delta-Binding Protein Antibody

Overview

Description:	Anti-PRKCDBP (RABBIT) Antibody - 600-401-DT1
Item No.:	600-401-DT1
Size:	100 µg
Applications:	ELISA, IF, IHC, WB
Reactivity:	Human, Mouse
Host Species:	Rabbit

Product Details

Background:	The protein kinase C delta (PKC-d) binding protein (PRKCDBP), also known as cavin-3, is a member of the cavin family of proteins that are involved in caveolin formation and regulation. PRKCDBP was initially identified in a screen of cultured cell lines for proteins that were strongly induced by serum starvation. Studies indicate that PRKCDBP binds not only to PKC-d but also to caveolin-1 and helps regulate caveolin traffic and function. Similar to other members of the cavin family, the expression of PRKCDBP was found to be down-regulated in various cancer cell lines, suggesting a possible tumor suppressor function of PRKCDBP.
Synonyms:	PRKCDBP Antibody, SRBC, HSRBC, CAVIN3, cavin-3, SRBC, Protein kinase C delta-binding protein, Cavin-3, hSRBC
Host Species:	Rabbit
Clonality:	Polyclonal
Format:	IgG

Target Details

Gene Name:	CAVIN3
Reactivity:	Human, Mouse
Immunogen Type:	Conjugated Peptide
Immunogen:	Anti- PRKCDBP antibody was prepared from whole rabbit serum produced by repeated immunizations with an 17 amino acid peptide near the internal region of human PRKCDBP.

Purity/Specificity: Anti-PRKCDBP Antibody was affinity purified from monospecific antiserum by immunoaffinity chromatography. It is predicted to not cross-react with other members of the cavin family.

Relevant Links:

- [UniProtKB - Q969G5](#)
- [GeneID - 112464](#)
- [NCBI - NP_659477](#)

Application Details

Tested Applications: ELISA, IF, IHC, WB

Application Note: Anti-PRKCDBP Antibody has been tested for use in ELISA, Western Blotting, Immunohistochemistry and Immunofluorescence. Specific conditions for reactivity should be optimized by the end user. Expect a band at approximately 28 kDa in Western Blots of specific cell lysates and tissues.

Assay Dilutions: All assays should be optimized by the user. Recommended dilutions (if any) may be listed below.

ELISA: 1:10,000 - 1:20,000

IF: User Optimized

IHC: User Optimized

WB: 1-2 µg/mL

Formulation

Physical State: Liquid (sterile filtered)

Concentration: 1 mg/mL by UV absorbance at 280 nm

Buffer: 0.01 M Sodium Phosphate, 0.25 M Sodium Chloride, pH 7.2

Preservative: 0.02% (w/v) Sodium Azide

Stabilizer: None

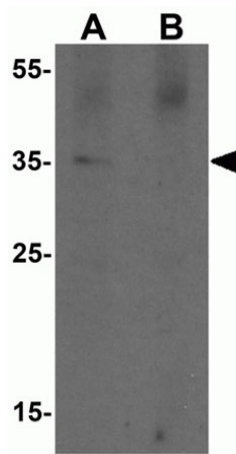
Shipping & Handling

Shipping Condition: Dry Ice

Storage Condition: Store vial at -20° C prior to opening. Aliquot contents and freeze at -20° C or below for extended storage. Avoid cycles of freezing and thawing. Centrifuge product if not completely clear after standing at room temperature. This product is stable for several weeks at 4° C as an undiluted liquid. Dilute only prior to immediate use.

Expiration: Expiration date is one (1) year from date of receipt.

Images

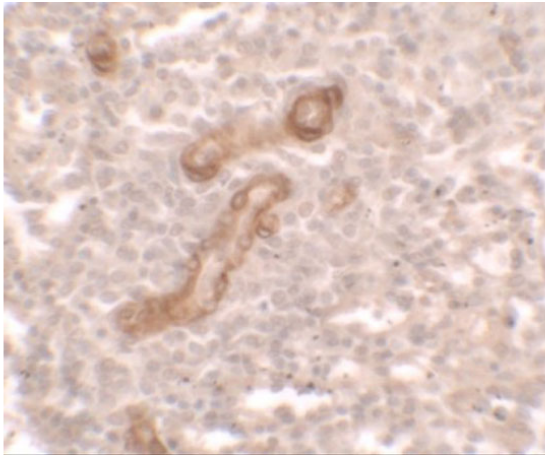


Western Blot

Western blot analysis of PRKCDBP.

Load: A20 cell lysate.

Primary Antibody: PRKCDBP antibody at 1 $\mu\text{g}/\text{mL}$ in (A) the absence and (B) the presence of blocking peptide.

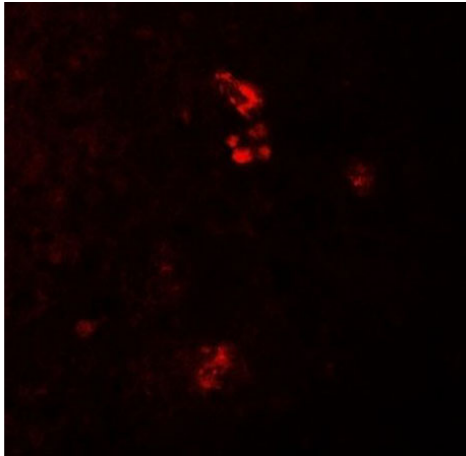


Immunohistochemistry

Immunohistochemistry of PRKCDBP.

Tissue: human spleen tissue.

Primary Antibody: PRKCDBP antibody at 2.5 $\mu\text{g}/\text{mL}$.

**Immunofluorescence Microscopy**

Immunofluorescence of PRKCDBP.

Tissue: human spleen tissue.

Primary Antibody: PRKCDBP antibody at 20 µg/mL.

Disclaimer

This product is for research use only and is not intended for therapeutic or diagnostic applications. Please contact a technical service representative for more information. All products of animal origin manufactured by Rockland Immunochemicals are derived from starting materials of North American origin. Collection was performed in United States Department of Agriculture (USDA) inspected facilities and all materials have been inspected and certified to be free of disease and suitable for exportation. All properties listed are typical characteristics and are not specifications. All suggestions and data are offered in good faith but without guarantee as conditions and methods of use of our products are beyond our control. All claims must be made within 30 days following the date of delivery. The prospective user must determine the suitability of our materials before adopting them on a commercial scale. Suggested uses of our products are not recommendations to use our products in violation of any patent or as a license under any patent of Rockland Immunochemicals, Inc. If you require a commercial license to use this material and do not have one, then return this material, unopened to: Rockland Inc., P.O. BOX 5199, Limerick, Pennsylvania, USA.