

Datasheet for 600-401-DR9**PPAPDC3 Antibody****Overview**

Description:	Anti-PPAPDC3 (RABBIT) Antibody - 600-401-DR9
Item No.:	600-401-DR9
Size:	100 µg
Applications:	ELISA, IF, WB
Reactivity:	Human, Mouse, Rat
Host Species:	Rabbit

Product Details

Background:	PPAPDC3, also known as nuclear envelope transmembrane protein 39 (NET39), was initially discovered in an in silico screen for secreted or membrane proteins. It is a member of the PAP2 superfamily of phosphatases and haloperoxidases. PPAPDC3 has recently been shown to act as a negative regulator of myoblast differentiation by diminishing the activity of the mammalian target of rapamycin TOR. PPAPDC3 is highly expressed in cardiac and skeletal muscle and becomes strongly upregulated during cultured myoblast differentiation tissues. Overexpression of PPAPDC3 in myoblasts repressed myogenesis while knockdown by RNA interference promoted differentiation indicating its part in the regulatory mechanism for myogenesis.
Synonyms:	PPAPDC3 Antibody, NET39, C9orf67, Probable lipid phosphate phosphatase PPAPDC3, Phosphatidic acid phosphatase type 2 domain-containing protein 3
Host Species:	Rabbit
Clonality:	Polyclonal
Format:	IgG

Target Details

Gene Name:	PLPP7
Reactivity:	Human, Mouse, Rat
Immunogen Type:	Conjugated Peptide

Immunogen:	Anti-PPAPDC3 antibody was prepared from whole rabbit serum produced by repeated immunizations with a 19 amino acid synthetic peptide from near the amino of terminus human PPAPDC3.
Purity/Specificity:	Anti-PPAPDC3 Antibody was affinity purified from monospecific antiserum by immunoaffinity chromatography. Cross reactivity with PPAPDC3 from other sources has not been determined.
Relevant Links:	<ul style="list-style-type: none">• UniProtKB - Q8NBV4• GeneID - 84814• NCBI - EAW87966

Application Details

Tested Applications:	ELISA, IF, WB
Application Note:	Anti-PPAPDC3 Antibody has been tested for use in ELISA, Western Blotting and Immunofluorescence. Specific conditions for reactivity should be optimized by the end user. Expect a band at approximately 29 kDa in Western Blots of specific cell lysates and tissues.
Assay Dilutions:	All assays should be optimized by the user. Recommended dilutions (if any) may be listed below.
ELISA:	1:10,000 - 1:20,000
IF:	20 µg/mL
WB:	1-2 µg/mL

Formulation

Physical State:	Liquid (sterile filtered)
Concentration:	1 mg/mL by UV absorbance at 280 nm
Buffer:	0.01 M Sodium Phosphate, 0.25 M Sodium Chloride, pH 7.2
Preservative:	0.02% (w/v) Sodium Azide
Stabilizer:	None

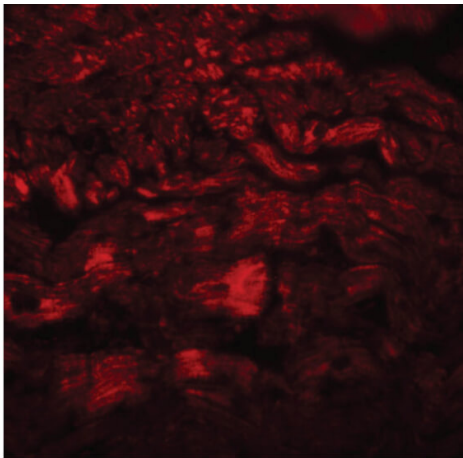
Shipping & Handling

Shipping Condition:	Dry Ice
----------------------------	---------

Storage Condition: Store vial at -20° C prior to opening. Aliquot contents and freeze at -20° C or below for extended storage. Avoid cycles of freezing and thawing. Centrifuge product if not completely clear after standing at room temperature. This product is stable for several weeks at 4° C as an undiluted liquid. Dilute only prior to immediate use.

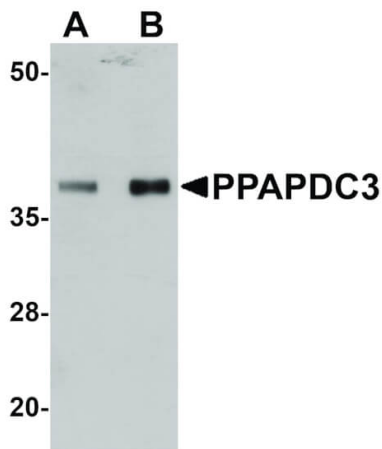
Expiration: Expiration date is one (1) year from date of receipt.

Images



Immunofluorescence Microscopy

Immunofluorescence Microscopy of PPAPDC3 antibody.
Tissue: Mouse heart tissue. Fixation: 0.5% PFA. Antigen retrieval: not required. Primary antibody: PPAPDC3 antibody at 20 µg/mL for 1 h at RT. Secondary antibody: Fluorescein rabbit secondary antibody at 1:10,000 for 45 min at RT. Localization: PPAPDC3 is nuclear and a membrane protein. Staining: PPAPDC3 as red fluorescent signal.



Western Blot

Western Blot of PPAPDC3 antibody. Lane 1: Mouse heart tissue lysate with PPAPDC3 antibody at 1 µg/mL. Lane 2: Mouse heart tissue lysate with PPAPDC3 antibody at 2 µg/mL. Secondary antibody: Peroxidase rabbit secondary antibody at 1:10,000 for 45 min at RT. Block: 5% BLOTTO overnight at 4°C. Predicted/Observed size: 29 kDa, 38 kDa for PPAPDC3. Other band(s): PPAPDC3 splice variants and isoforms.

Disclaimer

This product is for research use only and is not intended for therapeutic or diagnostic applications. Please contact a technical service representative for more information. All products of animal origin manufactured by Rockland Immunochemicals are derived from starting materials of North American origin. Collection was performed in United States Department of Agriculture (USDA) inspected facilities and all materials have been inspected and certified to be free of disease and suitable for exportation. All properties listed are typical characteristics and are not specifications. All suggestions and data are offered in good faith but without guarantee as conditions and methods of use of our products are beyond our control. All claims must be made within 30 days following the date of delivery. The prospective user must determine the suitability of our materials before adopting them on a commercial scale. Suggested uses of our products are not recommendations to use our products in violation of any patent or as a license under any patent of Rockland Immunochemicals, Inc. If you require a commercial license to use this material and do not have one, then return this material, unopened to: Rockland Inc., P.O. BOX 5199, Limerick, Pennsylvania, USA.