

Datasheet for 600-401-DR2**POLR3F Antibody****Overview**

Description:	Anti-POLR3F (RABBIT) Antibody - 600-401-DR2
Item No.:	600-401-DR2
Size:	100 µg
Applications:	ELISA, IF, IHC, WB
Reactivity:	Human, Mouse, Rat
Host Species:	Rabbit

Product Details

Background:	The human POLR3F is a component of RNA III polymerase. RNA polymerase III transcribes many essential, small, noncoding RNAs, including the 5S rRNAs and tRNAs. While most pol III-transcribed genes are found scattered throughout the linear chromosome maps or in multiple linear clusters, there is increasing evidence that many of these genes prefer to be spatially clustered, often at or near the nucleolus. This association could create an environment that fosters the coregulation of transcription by pol III with transcription of the large ribosomal RNA repeats by RNA polymerase I (pol I) within the nucleolus. Given the high number of pol III-transcribed genes in all eukaryotic genomes, the spatial organization of these genes is likely to affect a large portion of the other genes in a genome. POLR3F has also been recently identified as an HIV dependency factor (HDF), suggesting that POLR3F may be an important drug target in HIV treatment. At least two isoforms of POLR3F are known to exist.
Synonyms:	POLR3F Antibody, RPC6, RPC39, DNA-directed RNA polymerase III subunit RPC6, DNA-directed RNA polymerase III subunit F, RNA polymerase III subunit C6
Host Species:	Rabbit
Clonality:	Polyclonal
Format:	IgG

Target Details

Gene Name:	POLR3F
Reactivity:	Human, Mouse, Rat

Immunogen Type:	Conjugated Peptide
Immunogen:	Anti-POLR3F antibody was prepared from whole rabbit serum produced by repeated immunizations with a 21 amino acid synthetic peptide from near the N-terminus of human POLR3F.
Purity/Specificity:	Anti-POLR3F Antibody was affinity purified from monospecific antiserum by immunoaffinity chromatography. Cross reactivity with POLR3F from other sources has not been determined.
Relevant Links:	<ul style="list-style-type: none">• UniProtKB - Q9H1D9• GeneID - 10621• NCBI - CAC11110

Application Details

Tested Applications:	ELISA, IF, IHC, WB
Application Note:	Anti-POLR3F Antibody has been tested for use in ELISA, Western Blotting, Immunohistochemistry and Immunofluorescence. Specific conditions for reactivity should be optimized by the end user. Expect a band at approximately 36 kDa in Western Blots of specific cell lysates and tissues.
Assay Dilutions:	All assays should be optimized by the user. Recommended dilutions (if any) may be listed below.
ELISA:	1:5,000 - 1:10,000
IF:	20 µg/mL
IHC:	2.5 µg/mL
WB:	.5-1 µg/mL

Formulation

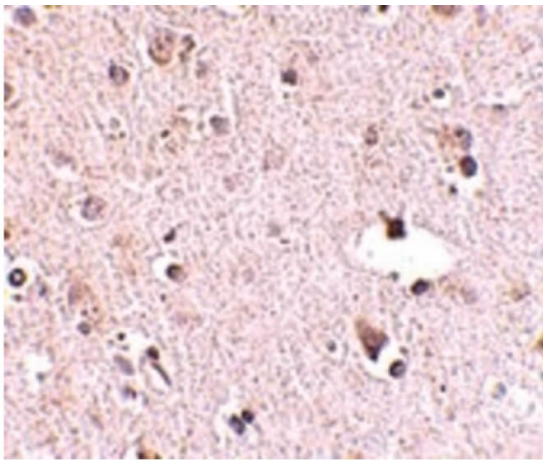
Physical State:	Liquid (sterile filtered)
Concentration:	1 mg/mL by UV absorbance at 280 nm
Buffer:	0.01 M Sodium Phosphate, 0.25 M Sodium Chloride, pH 7.2
Preservative:	0.02% (w/v) Sodium Azide
Stabilizer:	None

Shipping & Handling

Shipping Condition:	Dry Ice
----------------------------	---------

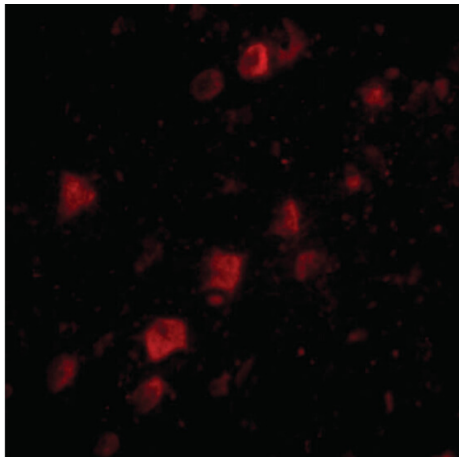
Storage Condition:	Store vial at -20° C prior to opening. Aliquot contents and freeze at -20° C or below for extended storage. Avoid cycles of freezing and thawing. Centrifuge product if not completely clear after standing at room temperature. This product is stable for several weeks at 4° C as an undiluted liquid. Dilute only prior to immediate use.
Expiration:	Expiration date is one (1) year from date of receipt.

Images



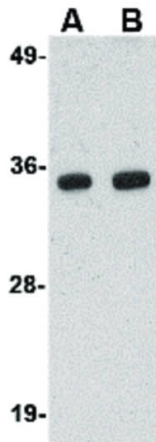
Immunohistochemistry

Immunohistochemistry of POLR3F antibody. Tissue: Human brain tissue. Fixation: formalin fixed paraffin embedded. Antigen retrieval: not required. Primary antibody: POLR3F antibody at 2.5 µg/mL for 1 h at RT. Secondary antibody: Peroxidase rabbit secondary antibody at 1:10,000 for 45 min at RT. Localization: POLR3F is nuclear and occasionally cytoplasmic. Staining: POLR3F as a precipitated red signal with hematoxylin purple nuclear counterstain.



Immunofluorescence Microscopy

Immunofluorescence Microscopy of POLR3F antibody. Tissue: Human brain tissue. Fixation: 0.5% PFA. Antigen retrieval: not required. Primary antibody: POLR3F antibody at 20 µg/mL for 1 h at RT. Secondary antibody: Fluorescein rabbit secondary antibody at 1:10,000 for 45 min at RT. Staining: POLR3F as red fluorescent signal.

**Western Blot**

Western Blot of POLR3F antibody. Lane A: Human brain tissue lysate at 0.5 $\mu\text{g}/\text{mL}$. Lane B: Human brain tissue lysate at 1 $\mu\text{g}/\text{mL}$. Load: 35 μg per lane. Secondary antibody: Peroxidase rabbit secondary antibody at 1:10,000 for 45 min at RT. Block: 5% BLOTTO overnight at 4°C. Predicted/Observed size: 35.6 kDa, ~35 kDa for POLR3F.

Disclaimer

This product is for research use only and is not intended for therapeutic or diagnostic applications. Please contact a technical service representative for more information. All products of animal origin manufactured by Rockland Immunochemicals are derived from starting materials of North American origin. Collection was performed in United States Department of Agriculture (USDA) inspected facilities and all materials have been inspected and certified to be free of disease and suitable for exportation. All properties listed are typical characteristics and are not specifications. All suggestions and data are offered in good faith but without guarantee as conditions and methods of use of our products are beyond our control. All claims must be made within 30 days following the date of delivery. The prospective user must determine the suitability of our materials before adopting them on a commercial scale. Suggested uses of our products are not recommendations to use our products in violation of any patent or as a license under any patent of Rockland Immunochemicals, Inc. If you require a commercial license to use this material and do not have one, then return this material, unopened to: Rockland Inc., P.O. BOX 5199, Limerick, Pennsylvania, USA.