

Datasheet for 600-401-DR0**PNAS4 Antibody****Overview**

Description:	Anti-PNAS4 (RABBIT) Antibody - 600-401-DR0
Item No.:	600-401-DR0
Size:	100 µg
Applications:	ELISA, WB
Reactivity:	Human, Mouse, Rat
Host Species:	Rabbit

Product Details

Background:	PNAS4 is a highly conserved protein that shares high homology from plants to animals. It was initially identified as a putative apoptosis-related protein in the human acute promyelocytic leukemia cell line NB4. PNAS4 is activated during the early response to DNA damage and can inhibit proliferation via apoptosis when overexpressed in some tumor cells such as U2OS, SKOV3, and A549. PNAS4 inhibits tumor cell proliferation through the following mechanisms: (i) overexpression of PNAS4 causes S phase arrest by regulating the expression of cell cycle-related proteins and (ii) PNAS4 induces apoptosis through the mitochondrial apoptosis pathway. Recent evidence has shown that PNAS4 may be involved in the genesis of some cancers and could be a potential candidate for lung cancer therapy alone or in combination with gemcitabine. At least two isoforms of PNAS4 are known to exist.
Synonyms:	PNAS4 Antibody, DESI, DESI1, DeSI-2, PNAS-4, PPPDE1, CGI-146, FAM152A, C1orf121, Desumoylating isopeptidase 2, PPPDE peptidase domain-containing protein 1
Host Species:	Rabbit
Clonality:	Polyclonal
Format:	IgG

Target Details

Gene Name:	DESI2
Reactivity:	Human, Mouse, Rat
Immunogen Type:	Conjugated Peptide

Immunogen:	Anti-PNAS4 antibody was prepared from whole rabbit serum produced by repeated immunizations with a 19 amino acid synthetic peptide near the C-terminus of human PNAS4.
Purity/Specificity:	Anti-PNAS4 Antibody was affinity purified from monospecific antiserum by immunoaffinity chromatography. Cross reactivity with PNAS4 from other sources has not been determined.
Relevant Links:	<ul style="list-style-type: none">• UniProtKB - Q9BSY9• GeneID - 51029• NCBI - NP_057160

Application Details

Tested Applications:	ELISA, WB
Application Note:	Anti-PNAS4 Antibody has been tested for use in ELISA and Western Blotting. Specific conditions for reactivity should be optimized by the end user. Expect a band at approximately 21 kDa in Western Blots of specific cell lysates and tissues.
Assay Dilutions:	All assays should be optimized by the user. Recommended dilutions (if any) may be listed below.
ELISA:	1:10,000 - 1:20,000
WB:	1-2 µg/mL

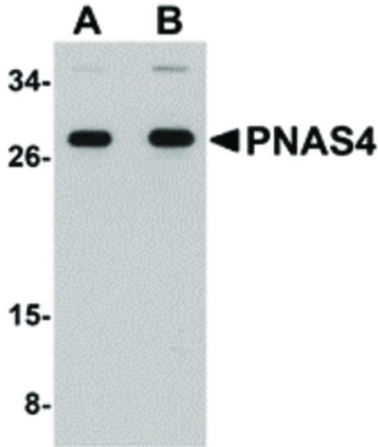
Formulation

Physical State:	Liquid (sterile filtered)
Concentration:	1 mg/mL by UV absorbance at 280 nm
Buffer:	0.01 M Sodium Phosphate, 0.25 M Sodium Chloride, pH 7.2
Preservative:	0.02% (w/v) Sodium Azide
Stabilizer:	None

Shipping & Handling

Shipping Condition:	Dry Ice
Storage Condition:	Store vial at -20° C prior to opening. Aliquot contents and freeze at -20° C or below for extended storage. Avoid cycles of freezing and thawing. Centrifuge product if not completely clear after standing at room temperature. This product is stable for several weeks at 4° C as an undiluted liquid. Dilute only prior to immediate use.
Expiration:	Expiration date is one (1) year from date of receipt.

Images



Western Blot

Western Blot of PNAS4 antibody. Lane 1: EL4 cell lysate with PNAS4 antibody at 1 $\mu\text{g}/\text{mL}$. Lane 2: EL4 cell lysate with PNAS4 antibody at 2 $\mu\text{g}/\text{mL}$. Load: 35 μg per lane. Secondary antibody: Peroxidase rabbit secondary antibody at 1:10,000 for 45 min at RT. Block: 5% BLOTTO overnight at 4°C. Predicted/Observed size: 21 kDa, 26 kDa for PNAS4. Other band(s): PNAS4 splice variants and isoforms.

Disclaimer

This product is for research use only and is not intended for therapeutic or diagnostic applications. Please contact a technical service representative for more information. All products of animal origin manufactured by Rockland Immunochemicals are derived from starting materials of North American origin. Collection was performed in United States Department of Agriculture (USDA) inspected facilities and all materials have been inspected and certified to be free of disease and suitable for exportation. All properties listed are typical characteristics and are not specifications. All suggestions and data are offered in good faith but without guarantee as conditions and methods of use of our products are beyond our control. All claims must be made within 30 days following the date of delivery. The prospective user must determine the suitability of our materials before adopting them on a commercial scale. Suggested uses of our products are not recommendations to use our products in violation of any patent or as a license under any patent of Rockland Immunochemicals, Inc. If you require a commercial license to use this material and do not have one, then return this material, unopened to: Rockland Inc., P.O. BOX 5199, Limerick, Pennsylvania, USA.