

## Datasheet for 600-401-DQ7

# PLEKHM3 Antibody

### Overview

<b>Description:</b>	Anti-PLEKHM3 (RABBIT) Antibody - 600-401-DQ7
<b>Item No.:</b>	600-401-DQ7
<b>Size:</b>	100 µg
<b>Applications:</b>	ELISA, IF, IHC, WB
<b>Reactivity:</b>	Human, Mouse, Rat
<b>Host Species:</b>	Rabbit

### Product Details

<b>Background:</b>	PLEKHM3, also known as DAPR, is a member of the M family of Pleckstrin homology domain-containing proteins. PLEKHM3 was initially identified through chromatin immunoprecipitation and CpG microarray analysis examining proteins regulated by myocyte-enhancing factor 2. In C2C12 myoblast cells, PLEKHM3 binds to the PI3K signaling member protein kinase B in the cytosol prior to differentiation into myotubes. Following the initiation of differentiation, PLEKHM3 was also found in membrane fractions. Knockdown of PLEKHM3 expression by RNAi resulted in the inhibition of myotube formation, suggesting that PLEKHM3 is a key component required by myoblasts for orchestrating their differentiation during myogenesis.
<b>Synonyms:</b>	PLEKHM3 Antibody, DAPR, PLEKHM1L, Pleckstrin homology domain-containing family M member 3, PH domain-containing family M member 3
<b>Host Species:</b>	Rabbit
<b>Clonality:</b>	Polyclonal
<b>Format:</b>	IgG

### Target Details

<b>Gene Name:</b>	PLEKHM3
<b>Reactivity:</b>	Human, Mouse, Rat
<b>Immunogen Type:</b>	Conjugated Peptide

<b>Immunogen:</b>	Anti-PLEKHM3 antibody was prepared from whole rabbit serum produced by repeated immunizations with a 13 amino acid synthetic peptide from near the C-terminus of human PLEKHM3.
<b>Purity/Specificity:</b>	Anti-PLEKHM3 Antibody was affinity purified from monospecific antiserum by immunoaffinity chromatography. Cross reactivity with PLEKHM3 from other sources has not been determined.
<b>Relevant Links:</b>	<ul style="list-style-type: none"><li>• <a href="#">UniProtKB - Q6ZWE6</a></li><li>• <a href="#">GeneID - 389072</a></li><li>• <a href="#">NCBI - Q6ZWE6</a></li></ul>

## Application Details

<b>Tested Applications:</b>	ELISA, IF, IHC, WB
<b>Application Note:</b>	Anti-PLEKHM3 Antibody has been tested for use in ELISA, Western Blotting, Immunohistochemistry and Immunofluorescence. Specific conditions for reactivity should be optimized by the end user. Expect a band at approximately 88 kDa in Western Blots of specific cell lysates and tissues.
<b>Assay Dilutions:</b>	All assays should be optimized by the user. Recommended dilutions (if any) may be listed below.
<b>ELISA:</b>	1:10,000 - 1:20,000
<b>IF:</b>	20 µg/mL
<b>IHC:</b>	5 µg/mL
<b>WB:</b>	1-2 µg/mL

## Formulation

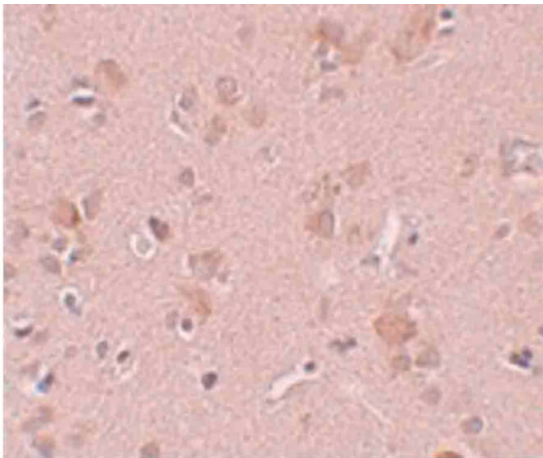
<b>Physical State:</b>	Liquid (sterile filtered)
<b>Concentration:</b>	1 mg/mL by UV absorbance at 280 nm
<b>Buffer:</b>	0.01 M Sodium Phosphate, 0.25 M Sodium Chloride, pH 7.2
<b>Preservative:</b>	0.02% (w/v) Sodium Azide
<b>Stabilizer:</b>	None

## Shipping & Handling

<b>Shipping Condition:</b>	Dry Ice
----------------------------	---------

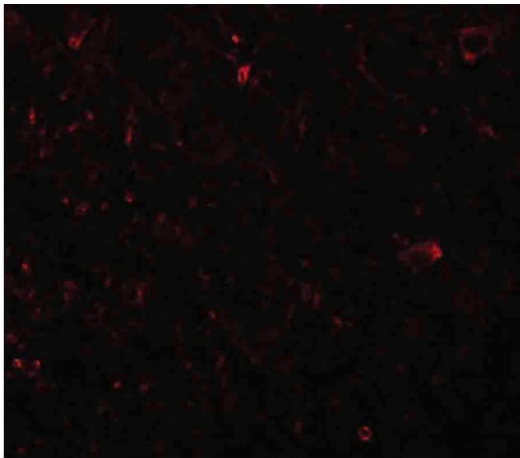
<b>Storage Condition:</b>	Store vial at -20° C prior to opening. Aliquot contents and freeze at -20° C or below for extended storage. Avoid cycles of freezing and thawing. Centrifuge product if not completely clear after standing at room temperature. This product is stable for several weeks at 4° C as an undiluted liquid. Dilute only prior to immediate use.
<b>Expiration:</b>	Expiration date is one (1) year from date of receipt.

## Images



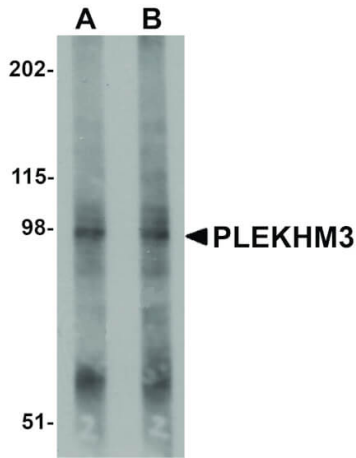
### Immunohistochemistry

Immunohistochemistry of PLEKHM3 antibody. Tissue: Human brain tissue. Fixation: formalin fixed paraffin embedded. Antigen retrieval: not required. Primary antibody: PLEKHM3 antibody at 5 µg/mL for 1 h at RT. Secondary antibody: Peroxidase rabbit secondary antibody at 1:10,000 for 45 min at RT. Staining: PLEKHM3 as precipitated brown signal with blue nuclear counterstain.



### Immunofluorescence Microscopy

Immunofluorescence Microscopy of PLKHM3 antibody. Tissue: Human brain tissue. Fixation: 0.5% PFA. Antigen retrieval: not required. Primary antibody: PLKHM3 antibody at 20 µg/mL for 1 h at RT. Secondary antibody: Fluorescein rabbit secondary antibody at 1:10,000 for 45 min at RT. Staining: PLKHM3 as red fluorescent signal.



#### Western Blot

Western Blot of PLEKHM3 antibody. Lane 1: Mouse skeletal muscle tissue lysate with PLEKHM3 antibody at 1 µg/mL.

Lane 2: Mouse skeletal muscle tissue lysate with PLEKHM3 antibody at 2 µg/mL. Secondary antibody: Peroxidase rabbit secondary antibody at 1:10,000 for 45 min at RT.

Block: 5% BLOTTO overnight at 4°C. Predicted/Observed size: 88 kDa, 98 kDa for PLEKHM3. Other band(s):

PLEKHM3. splice variants and isoforms.

## Disclaimer

This product is for research use only and is not intended for therapeutic or diagnostic applications. Please contact a technical service representative for more information. All products of animal origin manufactured by Rockland Immunochemicals are derived from starting materials of North American origin. Collection was performed in United States Department of Agriculture (USDA) inspected facilities and all materials have been inspected and certified to be free of disease and suitable for exportation. All properties listed are typical characteristics and are not specifications. All suggestions and data are offered in good faith but without guarantee as conditions and methods of use of our products are beyond our control. All claims must be made within 30 days following the date of delivery. The prospective user must determine the suitability of our materials before adopting them on a commercial scale. Suggested uses of our products are not recommendations to use our products in violation of any patent or as a license under any patent of Rockland Immunochemicals, Inc. If you require a commercial license to use this material and do not have one, then return this material, unopened to: Rockland Inc., P.O. BOX 5199, Limerick, Pennsylvania, USA.