

**Datasheet for 600-401-DN5****PIG-Y Antibody****Overview**

<b>Description:</b>	Anti-PIG-Y (RABBIT) Antibody - 600-401-DN5
<b>Item No.:</b>	600-401-DN5
<b>Size:</b>	100 µg
<b>Applications:</b>	ELISA, IF, IHC, WB
<b>Reactivity:</b>	Human, Mouse
<b>Host Species:</b>	Rabbit

**Product Details**

<b>Background:</b>	Glycosylphosphatidylinositol (GPI) lipid anchoring is an important post-translational modification of proteins that takes place in the endoplasmic reticulum. The synthesis of GPI is initiated by GPI-N-acetylglucosaminyltransferase (GPI-GnT), a complex of proteins including PIG-A, PIG-H, PIG-C, GPI1, and DPM2. PIG-Y, the mammalian homolog to yeast Eri1p, is also thought to be involved in the biosynthesis of GPI. The PIG-Y gene encodes two proteins, one of which arises from leaky scanning of the mRNA.
<b>Synonyms:</b>	PIG-Y Antibody, PIG-Y, Phosphatidylinositol N-acetylglucosaminyltransferase subunit Y, Phosphatidylinositol-glycan biosynthesis class Y protein, PIG-Y
<b>Host Species:</b>	Rabbit
<b>Clonality:</b>	Polyclonal
<b>Format:</b>	IgG

**Target Details**

<b>Gene Name:</b>	PIGY
<b>Reactivity:</b>	Human, Mouse
<b>Immunogen Type:</b>	Conjugated Peptide
<b>Immunogen:</b>	Anti-PIG-Y antibody was prepared from whole rabbit serum produced by repeated immunizations with a 16 amino acid synthetic peptide near the internal region of human PIG-Y.

**Purity/Specificity:** Anti-PIG-Y Antibody was affinity purified from monospecific antiserum by immunoaffinity chromatography. This antibody only detects isoform 1 of PIG-Y.

**Relevant Links:**

- [UniProtKB - Q3MUY2](#)
- [GeneID - 84992](#)
- [NCBI - NP\\_116295](#)

## Application Details

**Tested Applications:** ELISA, IF, IHC, WB

**Application Note:** Anti-PIG-Y Antibody has been tested for use in ELISA, Western Blotting, Immunohistochemistry, and Immunofluorescence. Despite its predicted molecular weight of 8kDa, PIG-Y often migrates at 28-30 kDa in SDS-PAGE. Expect a band in Western Blots using positive control A-20 whole cell lysate, Human spleen tissue for IHC and IF, or other specific cell lysates and tissues. Specific conditions for reactivity should be optimized by the end user.

**Assay Dilutions:** All assays should be optimized by the user. Recommended dilutions (if any) may be listed below.

**ELISA:** 1:10,000 - 1:20,000

**IF:** 20 µg/mL

**IHC:** 2.5 µg/mL

**WB:** 1-2 µg/mL

## Formulation

**Physical State:** Liquid (sterile filtered)

**Concentration:** 1 mg/mL by UV absorbance at 280 nm

**Buffer:** 0.01 M Sodium Phosphate, 0.25 M Sodium Chloride, pH 7.2

**Preservative:** 0.02% (w/v) Sodium Azide

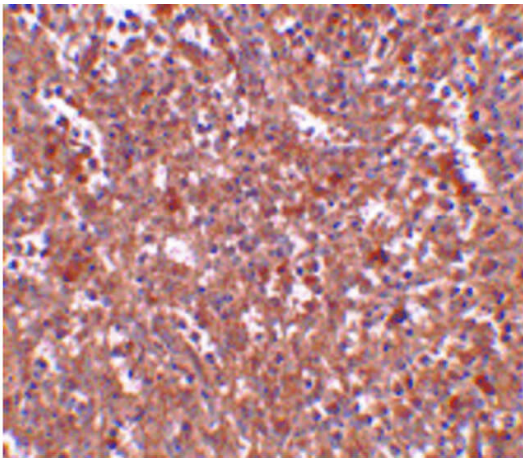
**Stabilizer:** None

## Shipping & Handling

**Shipping Condition:** Dry Ice

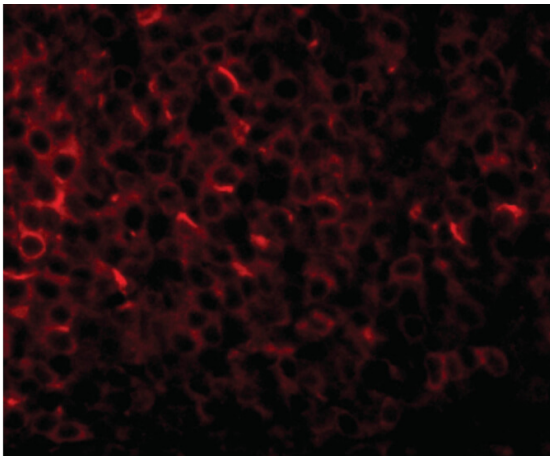
<b>Storage Condition:</b>	Store vial at -20° C prior to opening. Aliquot contents and freeze at -20° C or below for extended storage. Avoid cycles of freezing and thawing. Centrifuge product if not completely clear after standing at room temperature. This product is stable for several weeks at 4° C as an undiluted liquid. Dilute only prior to immediate use.
<b>Expiration:</b>	Expiration date is one (1) year from date of receipt.

## Images



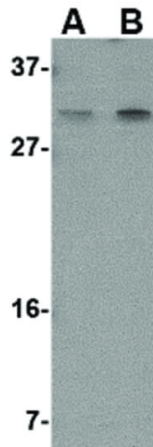
### Immunohistochemistry

Immunohistochemistry of PIG-Y antibody. Tissue: Human spleen tissue. Fixation: formalin fixed paraffin embedded. Antigen retrieval: not required. Primary antibody: PIG-Y antibody at 2.5 µg/mL for 1 h at RT. Secondary antibody: Peroxidase rabbit secondary antibody at 1:10,000 for 45 min at RT. Localization: PIG-Y is nuclear and occasionally cytoplasmic. Staining: PIG-Y as a precipitated red signal with hematoxylin purple nuclear counterstain.



### Immunofluorescence Microscopy

Immunofluorescence Microscopy of PIGY antibody. Tissue: Human spleen tissue. Fixation: 0.5% PFA. Antigen retrieval: not required. Primary antibody: PIGY antibody at 20 µg/mL for 1 h at RT. Secondary antibody: Fluorescein rabbit secondary antibody at 1:10,000 for 45 min at RT. Staining: PIGY as a red fluorescent signal.

**Western Blot**

Western Blot of PIG-Y antibody. Lane A: Human spleen tissue lysate at 1  $\mu\text{g}/\text{mL}$ . Lane B: Human spleen tissue lysate at 2  $\mu\text{g}/\text{mL}$ . Load: 35  $\mu\text{g}$  per lane. Secondary antibody: Peroxidase rabbit secondary antibody at 1:10,000 for 45 min at RT. Block: 5% BLOTTO overnight at 4°C. Predicted/Observed size: 8 kDa, ~29 kDa for PIG-Y.

**Disclaimer**

This product is for research use only and is not intended for therapeutic or diagnostic applications. Please contact a technical service representative for more information. All products of animal origin manufactured by Rockland Immunochemicals are derived from starting materials of North American origin. Collection was performed in United States Department of Agriculture (USDA) inspected facilities and all materials have been inspected and certified to be free of disease and suitable for exportation. All properties listed are typical characteristics and are not specifications. All suggestions and data are offered in good faith but without guarantee as conditions and methods of use of our products are beyond our control. All claims must be made within 30 days following the date of delivery. The prospective user must determine the suitability of our materials before adopting them on a commercial scale. Suggested uses of our products are not recommendations to use our products in violation of any patent or as a license under any patent of Rockland Immunochemicals, Inc. If you require a commercial license to use this material and do not have one, then return this material, unopened to: Rockland Inc., P.O. BOX 5199, Limerick, Pennsylvania, USA.