

**Datasheet for 600-401-DN1****PICALM Antibody****Overview**

<b>Description:</b>	Anti-PICALM (RABBIT) Antibody - 600-401-DN1
<b>Item No.:</b>	600-401-DN1
<b>Size:</b>	100 µg
<b>Applications:</b>	ELISA, IF, WB
<b>Reactivity:</b>	Human, Mouse, Rat
<b>Host Species:</b>	Rabbit

**Product Details**

<b>Background:</b>	PICALM, also known as the clathrin assembly lymphoid myeloid leukemia (CALM) protein, co-localizes with clathrin at clathrin-coated areas of the plasma membrane and in the Golgi area, and is thought to be an important component of the coated pit internalization machinery. Fusion proteins involving PICALM have been implicated in acute myeloid and T-cell acute lymphoblastic leukemia. PICALM is also expressed in neurons and is present at the synapse where it facilitates the endocytosis of the synaptic vesicle protein VAMP2. Recent studies have identified variants of PICALM associated with Alzheimer's disease and have suggested this protein may play a role in the endocytosis and recycling of the amyloid protein precursor (APP).
<b>Synonyms:</b>	PICALM Antibody, LAP, CALM, CLTH, Phosphatidylinositol-binding clathrin assembly protein, Clathrin assembly lymphoid myeloid leukemia protein
<b>Host Species:</b>	Rabbit
<b>Clonality:</b>	Polyclonal
<b>Format:</b>	IgG

**Target Details**

<b>Gene Name:</b>	PICALM
<b>Reactivity:</b>	Human, Mouse, Rat
<b>Immunogen Type:</b>	Conjugated Peptide

**Immunogen:** Anti-PICALM antibody was prepared from whole rabbit serum produced by repeated immunizations with a 15 amino acid synthetic peptide from near the N-terminus of human PICALM.

**Purity/Specificity:** Anti-PICALM Antibody was affinity purified from monospecific antiserum by immunoaffinity chromatography. Cross reactivity with PICALM from other sources has not been determined.

**Relevant Links:**

- [UniProtKB - Q13492](#)
- [GeneID - 8301](#)
- [NCBI - NP\\_009097](#)

## Application Details

**Tested Applications:** ELISA, IF, WB

**Application Note:** Anti-PICALM Antibody has been tested for use in ELISA, Western Blotting and Immunofluorescence. Specific conditions for reactivity should be optimized by the end user. Expect a band at approximately 71 kDa in Western Blots of specific cell lysates and tissues.

**Assay Dilutions:** All assays should be optimized by the user. Recommended dilutions (if any) may be listed below.

**ELISA:** 1:10,000

**IF:** 20 µg/mL

**WB:** 1 µg/mL

## Formulation

**Physical State:** Liquid (sterile filtered)

**Concentration:** 1 mg/mL by UV absorbance at 280 nm

**Buffer:** 0.01 M Sodium Phosphate, 0.25 M Sodium Chloride, pH 7.2

**Preservative:** 0.02% (w/v) Sodium Azide

**Stabilizer:** None

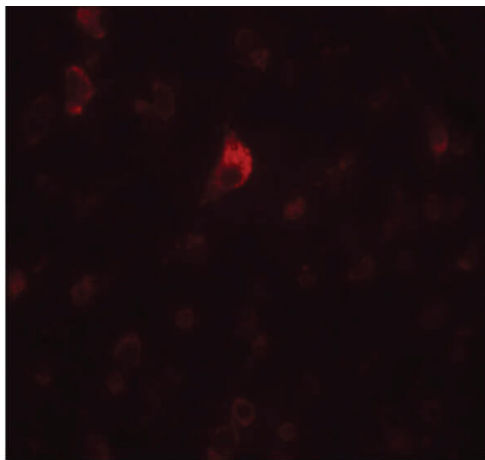
## Shipping & Handling

**Shipping Condition:** Dry Ice

**Storage Condition:** Store vial at -20° C prior to opening. Aliquot contents and freeze at -20° C or below for extended storage. Avoid cycles of freezing and thawing. Centrifuge product if not completely clear after standing at room temperature. This product is stable for several weeks at 4° C as an undiluted liquid. Dilute only prior to immediate use.

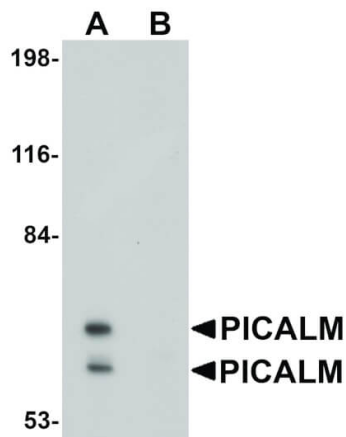
**Expiration:** Expiration date is one (1) year from date of receipt.

## Images



### Immunofluorescence Microscopy

Immunofluorescence Microscopy of PICALM antibody.  
Tissue: Human brain tissue. Fixation: 0.5% PFA. Antigen retrieval: not required. Primary antibody: PICALM antibody at 20 µg/mL for 1 h at RT. Secondary antibody: Fluorescein rabbit secondary antibody at 1:10,000 for 45 min at RT. Localization: PICALM is nuclear and a membrane protein. Staining: PICALM as red fluorescent signal.



### Western Blot

Western Blot of PICALM antibody. Lane 1: EL4 cell lysate in the absence of blocking peptide. Lane 2: EL4 cell lysate in the presence of blocking peptide. Primary Antibody: with PICALM antibody at 1 µg/mL. Secondary antibody: Peroxidase rabbit secondary antibody at 1:10,000 for 45 min at RT. Block: 5% BLOTTO overnight at 4°C. Predicted/Observed size: 71 kDa, 71 kDa for PICALM. Other band(s): PICALM splice variants and isoforms.

## Disclaimer

This product is for research use only and is not intended for therapeutic or diagnostic applications. Please contact a technical service representative for more information. All products of animal origin manufactured by Rockland Immunochemicals are derived from starting materials of North American origin. Collection was performed in United States Department of Agriculture (USDA) inspected facilities and all materials have been inspected and certified to be free of disease and suitable for exportation. All properties listed are typical characteristics and are not specifications. All suggestions and data are offered in good faith but without guarantee as conditions and methods of use of our products are beyond our control. All claims must be made within 30 days following the date of delivery. The prospective user must determine the suitability of our materials before adopting them on a commercial scale. Suggested uses of our products are not recommendations to use our products in violation of any patent or as a license under any patent of Rockland Immunochemicals, Inc. If you require a commercial license to use this material and do not have one, then return this material, unopened to: Rockland Inc., P.O. BOX 5199, Limerick, Pennsylvania, USA.