

Datasheet for 600-401-DN0**PIBF1 Antibody****Overview**

Description:	Anti-PIBF1 (RABBIT) Antibody - 600-401-DN0
Item No.:	600-401-DN0
Size:	100 µg
Applications:	ELISA, IF, IHC, WB
Reactivity:	Human, Mouse, Rat
Host Species:	Rabbit

Product Details

Background:	PIBF1 is synthesized during pregnancy in response to progesterone by T lymphocytes. PIBF1 inhibits arachidonic acid release, controls NK activity, and modifies the cytokine balance exerting an anti-abortive effect. It contains a leucine zipper motif, a basic zipper sequence, a PEST sequence, a nuclear localization signal, an ER membrane retention signal and N-glycosylation and phosphorylation sites. PIBF1 is significantly higher in healthy pregnant women than in women at risk for premature pregnancy termination. Full-length PIBF1 is associated with the nucleus and functions as a transcription factor, whereas secretion of shorter forms which may act as cytokines is induced by activation of the cell.
Synonyms:	PIBF1 Antibody, PIBF, CEP90, C13orf24, PIBF, Progesterone-induced-blocking factor 1
Host Species:	Rabbit
Clonality:	Polyclonal
Format:	IgG

Target Details

Gene Name:	PIBF1
Reactivity:	Human, Mouse, Rat
Immunogen Type:	Conjugated Peptide
Immunogen:	Anti- PIBF1 antibody was prepared from whole rabbit serum produced by repeated immunizations with a 15 amino acid peptide near the C-terminus of human PIBF1.

Purity/Specificity: Anti-PIBF1 Antibody was affinity purified from monospecific antiserum by immunoaffinity chromatography. Multiple isoforms of PIBF1 exists as a result of alternative splicing event.

Relevant Links:

- [UniProtKB - Q8WXW3](#)
- [GeneID - 10464](#)
- [NCBI - NP_006337](#)

Application Details

Tested Applications: ELISA, IF, IHC, WB

Application Note: Anti-PIBF1 Antibody has been tested for use in ELISA, Western Blotting, Immunohistochemistry and Immunofluorescence. Specific conditions for reactivity should be optimized by the end user. Expect a band at approximately 90 kDa in Western Blots of specific cell lysates and tissues.

Assay Dilutions: All assays should be optimized by the user. Recommended dilutions (if any) may be listed below.

ELISA: 1:10,000 - 1:20,000

IF: User Optimized

IHC: User Optimized

WB: 1-2 µg/mL

Formulation

Physical State: Liquid (sterile filtered)

Concentration: 1 mg/mL by UV absorbance at 280 nm

Buffer: 0.01 M Sodium Phosphate, 0.25 M Sodium Chloride, pH 7.2

Preservative: 0.02% (w/v) Sodium Azide

Stabilizer: None

Shipping & Handling

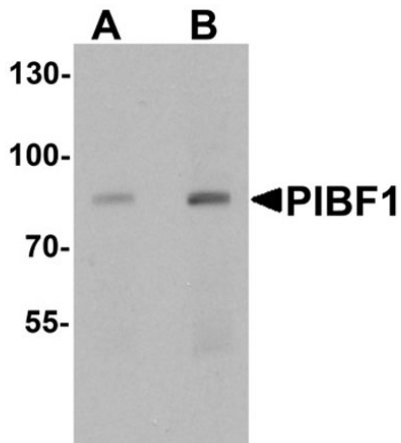
Shipping Condition: Dry Ice

Storage Condition: Store vial at -20° C prior to opening. Aliquot contents and freeze at -20° C or below for extended storage. Avoid cycles of freezing and thawing. Centrifuge product if not completely clear after standing at room temperature. This product is stable for several weeks at 4° C as an undiluted liquid. Dilute only prior to immediate use.

Expiration:

Expiration date is one (1) year from date of receipt.

Images

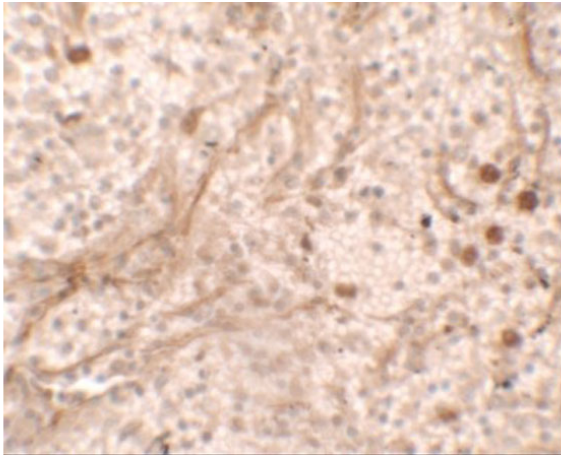


Western Blot

Western blot analysis of PIBF1.

Load: human placenta tissue lysate.

Primary Antibody: PIBF1 antibody at (A) 1 and (B) 2 $\mu\text{g}/\text{mL}$.

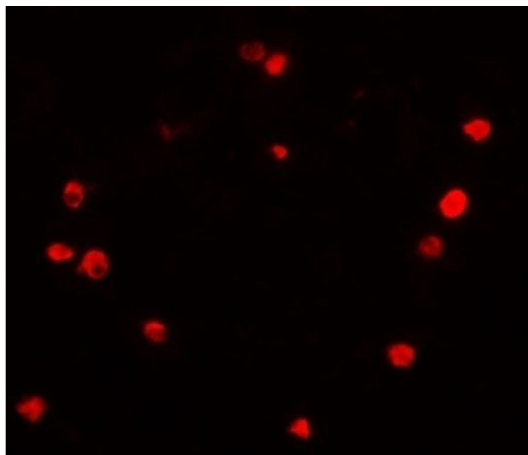


Immunohistochemistry

Immunohistochemistry of PIBF1.

Tissue: human spleen tissue.

Primary Antibody: PIBF1 antibody at 5 $\mu\text{g}/\text{mL}$.

**Immunofluorescence Microscopy**

Immunofluorescence of PIBF1.

Tissue: human spleen tissue.

Primary Antibody: PIBF1 antibody at 20 µg/mL.

Disclaimer

This product is for research use only and is not intended for therapeutic or diagnostic applications. Please contact a technical service representative for more information. All products of animal origin manufactured by Rockland Immunochemicals are derived from starting materials of North American origin. Collection was performed in United States Department of Agriculture (USDA) inspected facilities and all materials have been inspected and certified to be free of disease and suitable for exportation. All properties listed are typical characteristics and are not specifications. All suggestions and data are offered in good faith but without guarantee as conditions and methods of use of our products are beyond our control. All claims must be made within 30 days following the date of delivery. The prospective user must determine the suitability of our materials before adopting them on a commercial scale. Suggested uses of our products are not recommendations to use our products in violation of any patent or as a license under any patent of Rockland Immunochemicals, Inc. If you require a commercial license to use this material and do not have one, then return this material, unopened to: Rockland Inc., P.O. BOX 5199, Limerick, Pennsylvania, USA.