

Datasheet for 600-401-DM1**PHF14 Antibody****Overview**

Description:	Anti-PHF14 (RABBIT) Antibody - 600-401-DM1
Item No.:	600-401-DM1
Size:	100 µg
Applications:	ELISA, IF, WB
Reactivity:	Human, Mouse, Rat
Host Species:	Rabbit

Product Details

Background:	PHF14, a novel plant homology domain (PHD) transcription factor, controls the proliferation of mesenchymal cells by regulating PDGFR alpha expression in embryonic development (1). PHD finger transcription factors are concerned with transcriptional regulation by interacting with modified histones (2), and dysregulation of several genes encoding PHD finger transcription factors, such as ING1 and RBP2, has been found in human cancer diseases suggesting these factors have an important role for cancer cell proliferation. PHF14 is a potential target for new treatments of lung fibrosis (1, 3).
Synonyms:	PHF14 Antibody , KIAA0783, PHD finger protein 14
Host Species:	Rabbit
Clonality:	Polyclonal
Format:	IgG

Target Details

Gene Name:	PHF14
Reactivity:	Human, Mouse, Rat
Immunogen Type:	Conjugated Peptide
Immunogen:	Anti-PHF14 antibody was prepared from whole rabbit serum produced by repeated immunizations with a 19 amino acid peptide near the N-terminus of human PHF14.

Purity/Specificity:	Anti-PHF14 Antibody was affinity purified from monospecific antiserum by immunoaffinity chromatography. PHF14 antibody is human, mouse and rat reactive. Multiple isoforms of PHF14 are known to exist.
Relevant Links:	<ul style="list-style-type: none">• UniProtKB - O94880• GeneID - 9678• NCBI - NP_055475

Application Details

Tested Applications:	ELISA, IF, WB
Application Note:	Anti-PHF14 Antibody has been tested for use in ELISA, Western Blotting and Immunofluorescence. Specific conditions for reactivity should be optimized by the end user. Expect a band at approximately 100 kDa in Western Blots of specific cell lysates and tissues.
Assay Dilutions:	All assays should be optimized by the user. Recommended dilutions (if any) may be listed below.
ELISA:	1:10,000
IF:	User Optimized
WB:	1 µg/mL

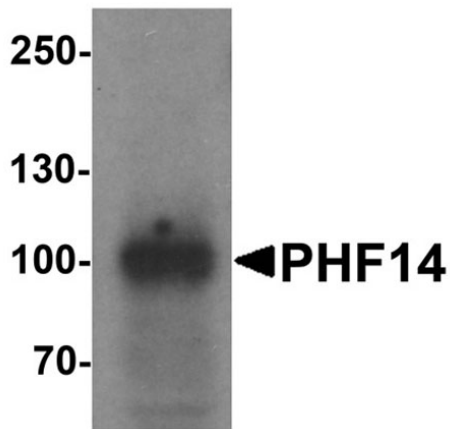
Formulation

Physical State:	Liquid (sterile filtered)
Concentration:	1 mg/mL by UV absorbance at 280 nm
Buffer:	0.01 M Sodium Phosphate, 0.25 M Sodium Chloride, pH 7.2
Preservative:	0.02% (w/v) Sodium Azide
Stabilizer:	None

Shipping & Handling

Shipping Condition:	Dry Ice
Storage Condition:	Store vial at -20° C prior to opening. Aliquot contents and freeze at -20° C or below for extended storage. Avoid cycles of freezing and thawing. Centrifuge product if not completely clear after standing at room temperature. This product is stable for several weeks at 4° C as an undiluted liquid. Dilute only prior to immediate use.
Expiration:	Expiration date is one (1) year from date of receipt.

Images



Western Blot

Western blot of PHF14.

Load: 293 cell lysate.

Primary Antibody: PHF14 antibody at 1 μ g/ml.

Disclaimer

This product is for research use only and is not intended for therapeutic or diagnostic applications. Please contact a technical service representative for more information. All products of animal origin manufactured by Rockland Immunochemicals are derived from starting materials of North American origin. Collection was performed in United States Department of Agriculture (USDA) inspected facilities and all materials have been inspected and certified to be free of disease and suitable for exportation. All properties listed are typical characteristics and are not specifications. All suggestions and data are offered in good faith but without guarantee as conditions and methods of use of our products are beyond our control. All claims must be made within 30 days following the date of delivery. The prospective user must determine the suitability of our materials before adopting them on a commercial scale. Suggested uses of our products are not recommendations to use our products in violation of any patent or as a license under any patent of Rockland Immunochemicals, Inc. If you require a commercial license to use this material and do not have one, then return this material, unopened to: Rockland Inc., P.O. BOX 5199, Limerick, Pennsylvania, USA.