

Datasheet for 600-401-DM0**PHC3 Antibody****Overview**

Description:	Anti-PHC3 (RABBIT) Antibody - 600-401-DM0
Item No.:	600-401-DM0
Size:	100 µg
Applications:	ELISA, WB
Reactivity:	Human, Mouse, Rat
Host Species:	Rabbit

Product Details

Background:	Polycomb group (PcG) proteins assemble into multimeric protein complexes, which are involved in maintaining the transcriptional repressive state of genes throughout development (1). PHC3 (Polyhomeotic-like protein 3), also known as Early development regulatory protein 3, is a 983 amino acid nuclear protein that is a component of the PcG multiprotein PRC1 complex (2). PRC1 complex acts via chromatin remodeling and modification of histones. PHC3 contains 1 FCS-type zinc finger and SAM (sterile alpha motif) domain (2-3). PHC 3 has been regarded as a candidate tumor suppressor of osteosarcoma (4).
Synonyms:	PHC3 Antibody, EDR3, HPH3, EDR3, PH3, Polyhomeotic-like protein 3, Early development regulatory protein 3, hPH3
Host Species:	Rabbit
Clonality:	Polyclonal
Format:	IgG

Target Details

Gene Name:	PHC3
Reactivity:	Human, Mouse, Rat
Immunogen Type:	Conjugated Peptide
Immunogen:	Anti-PHC3 antibody was prepared from whole rabbit serum produced by repeated immunizations with a 19 amino acid peptide near the N-terminus of human PHC3.

Purity/Specificity:	Anti-PHC3 antibody was affinity purified from monospecific antiserum by immunoaffinity chromatography. PHC3 antibody is human, mouse and rat specific. At least six isoforms of PHC3 are known to exist.
Relevant Links:	<ul style="list-style-type: none">• UniProtKB - Q8NDX5• GeneID - 80012• NCBI - NP_079223

Application Details

Tested Applications:	ELISA, WB
Application Note:	Anti-PHC3 Antibody has been tested for use in ELISA and Western Blotting. Specific conditions for reactivity should be optimized by the end user. Expect a band at approximately 106 kDa in Western Blots of specific cell lysates and tissues.
Assay Dilutions:	All assays should be optimized by the user. Recommended dilutions (if any) may be listed below.
ELISA:	1:10,000 - 1:20,000
WB:	1-2 µg/mL

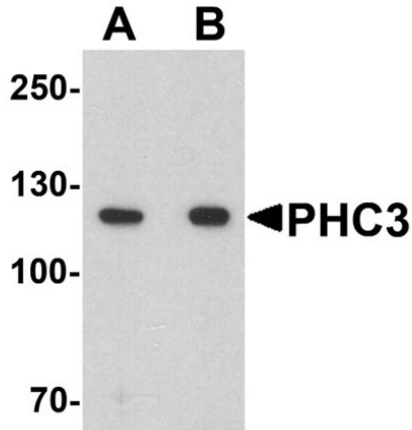
Formulation

Physical State:	Liquid (sterile filtered)
Concentration:	1 mg/mL by UV absorbance at 280 nm
Buffer:	0.01 M Sodium Phosphate, 0.25 M Sodium Chloride, pH 7.2
Preservative:	0.02% (w/v) Sodium Azide
Stabilizer:	None

Shipping & Handling

Shipping Condition:	Dry Ice
Storage Condition:	Store vial at -20° C prior to opening. Aliquot contents and freeze at -20° C or below for extended storage. Avoid cycles of freezing and thawing. Centrifuge product if not completely clear after standing at room temperature. This product is stable for several weeks at 4° C as an undiluted liquid. Dilute only prior to immediate use.
Expiration:	Expiration date is one (1) year from date of receipt.

Images



Western Blot

Western blot of PHC3.

Load: 3T3 cell lysate.

Primary Antibody: PHC3 antibody at (A) 1 and (B) 2 $\mu\text{g/ml}$.

Disclaimer

This product is for research use only and is not intended for therapeutic or diagnostic applications. Please contact a technical service representative for more information. All products of animal origin manufactured by Rockland Immunochemicals are derived from starting materials of North American origin. Collection was performed in United States Department of Agriculture (USDA) inspected facilities and all materials have been inspected and certified to be free of disease and suitable for exportation. All properties listed are typical characteristics and are not specifications. All suggestions and data are offered in good faith but without guarantee as conditions and methods of use of our products are beyond our control. All claims must be made within 30 days following the date of delivery. The prospective user must determine the suitability of our materials before adopting them on a commercial scale. Suggested uses of our products are not recommendations to use our products in violation of any patent or as a license under any patent of Rockland Immunochemicals, Inc. If you require a commercial license to use this material and do not have one, then return this material, unopened to: Rockland Inc., P.O. BOX 5199, Limerick, Pennsylvania, USA.