

Datasheet for 600-401-DL4**PGCC1 Antibody****Overview**

Description:	Anti-PGCC1 (RABBIT) Antibody - 600-401-DL4
Item No.:	600-401-DL4
Size:	100 µg
Applications:	ELISA, WB
Reactivity:	Human, Mouse, Rat
Host Species:	Rabbit

Product Details

Background:	The transcription factor peroxisome proliferator-activated receptor gamma (PPARγ) plays essential roles in adipogenesis by regulating adipocyte-specific genes through association of various co-factors. One such co-factor, PGCC1 (also known as FAM120B), is widely expressed in adult tissues and throughout embryonic development. Overexpression of this protein in OP9 pre-adipocytes promoted their differentiation into adipocytes, and knockdown of PGCC1 expression through RNA interference blocked this process. PGCC1 is homologous to C9orf10 (also known as FAM120A) and has been mapped to chromosome Xp11.22. At least two isoforms of PGCC1 are known to exist.
Synonyms:	PGCC1 Antibody, CCPG, PGCC1, KIAA1838, dJ894D12.1, CCPG, Constitutive coactivator of peroxisome proliferator-activated receptor gamma, PPARG constitutive coactivator 1, Constitutive coactivator of PPAR-gamma
Host Species:	Rabbit
Clonality:	Polyclonal
Format:	IgG

Target Details

Gene Name:	FAM120B
Reactivity:	Human, Mouse, Rat
Immunogen Type:	Conjugated Peptide

Immunogen:	Anti-PGCC1 antibody was prepared from whole rabbit serum produced by repeated immunizations with an 18 amino acid synthetic peptide from near the C-terminus of human PGCC1.
Purity/Specificity:	Anti-PGCC1 Antibody was affinity purified from monospecific antiserum by immunoaffinity chromatography. This antibody will not cross-react with FAM120A.
Relevant Links:	<ul style="list-style-type: none">• UniProtKB - Q96EK7• GeneID - 84498• NCBI - Q96EK7

Application Details

Tested Applications:	ELISA, WB
Application Note:	Anti-PGCC1 Antibody has been tested for use in ELISA and Western Blotting. Specific conditions for reactivity should be optimized by the end user. Expect a band at approximately 104 kDa in Western Blots of specific cell lysates and tissues.
Assay Dilutions:	All assays should be optimized by the user. Recommended dilutions (if any) may be listed below.
ELISA:	1:5000 - 1:10000
WB:	0.5-1 µg/mL

Formulation

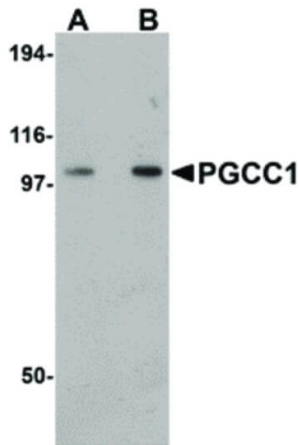
Physical State:	Liquid (sterile filtered)
Concentration:	1 mg/mL by UV absorbance at 280 nm
Buffer:	0.01 M Sodium Phosphate, 0.25 M Sodium Chloride, pH 7.2
Preservative:	0.02% (w/v) Sodium Azide
Stabilizer:	None

Shipping & Handling

Shipping Condition:	Dry Ice
Storage Condition:	Store vial at -20° C prior to opening. Aliquot contents and freeze at -20° C or below for extended storage. Avoid cycles of freezing and thawing. Centrifuge product if not completely clear after standing at room temperature. This product is stable for several weeks at 4° C as an undiluted liquid. Dilute only prior to immediate use.

Expiration: Expiration date is one (1) year from date of receipt.

Images



Western Blot

Western Blot of PGCC1 antibody. Lane 1: rat thymus tissue lysate with PGCC1 antibody at 0.5 $\mu\text{g}/\text{mL}$. Lane 2: rat thymus tissue lysate with PGCC1 antibody at 1 $\mu\text{g}/\text{mL}$. Secondary antibody: Peroxidase rabbit secondary antibody at 1:10,000 for 45 min at RT. Block: 5% BLOTTO overnight at 4°C. Predicted/Observed size: 104 kDa, 105 kDa for PGCC1. Other band(s): PGCC1 splice variants and isoforms.

Disclaimer

This product is for research use only and is not intended for therapeutic or diagnostic applications. Please contact a technical service representative for more information. All products of animal origin manufactured by Rockland Immunochemicals are derived from starting materials of North American origin. Collection was performed in United States Department of Agriculture (USDA) inspected facilities and all materials have been inspected and certified to be free of disease and suitable for exportation. All properties listed are typical characteristics and are not specifications. All suggestions and data are offered in good faith but without guarantee as conditions and methods of use of our products are beyond our control. All claims must be made within 30 days following the date of delivery. The prospective user must determine the suitability of our materials before adopting them on a commercial scale. Suggested uses of our products are not recommendations to use our products in violation of any patent or as a license under any patent of Rockland Immunochemicals, Inc. If you require a commercial license to use this material and do not have one, then return this material, unopened to: Rockland Inc., P.O. BOX 5199, Limerick, Pennsylvania, USA.