

Datasheet for 600-401-DL0**Pellino 1 Antibody****Overview**

Description:	Anti-Pellino 1 (RABBIT) Antibody - 600-401-DL0
Item No.:	600-401-DL0
Size:	100 µg
Applications:	ELISA, IF, IHC, WB
Reactivity:	Human, Mouse, Rat
Host Species:	Rabbit

Product Details

Background:	The Pellino proteins are a highly homologous family of E3 ubiquitin ligases that act as upstream mediators in Toll-like receptor (TLR) pathways that lead to activation of MAP kinases and transcription factors. Pellino 1 is required for interleukin-1-mediated signaling through its interaction with the IRAK4-IRAK-TRAF6 complex, ultimately resulting in the activation of NF-κB. Like other members of the Pellino family, Pellino 1 is an E3 ubiquitin ligase, able to catalyze the polyubiquitination of IRAK1. It is activated via phosphorylation by either IRAK1 and IRAK4 or the IKK-related kinases IKK-ε and TBK1. In addition to phosphorylation, Pellino 1 activity is also modulated via ubiquitination and sumoylation.
Synonyms:	Pellino 1 Antibody, PRISM, E3 ubiquitin-protein ligase pellino homolog 1, Pellino-related intracellular-signaling molecule, Pellino-1
Host Species:	Rabbit
Clonality:	Polyclonal
Format:	IgG

Target Details

Gene Name:	PELI1
Reactivity:	Human, Mouse, Rat
Immunogen Type:	Conjugated Peptide
Immunogen:	Anti- Pellino 1 antibody was prepared from whole rabbit serum produced by repeated immunizations with a 15 amino acid peptide near the C-terminus of human Pellino 1.

Purity/Specificity: Anti-Pellino 1 Antibody was affinity purified from monospecific antiserum by immunoaffinity chromatography. Cross reactivity with Pellino 1 from other sources has not been determined.

Relevant Links:

- [UniProtKB - Q96FA3](#)
- [GeneID - 57162](#)
- [NCBI - NP_065702](#)

Application Details

Tested Applications: ELISA, IF, IHC, WB

Application Note: Anti-Pellino 1 Antibody has been tested for use in ELISA, Western Blotting, Immunocytochemistry and Immunofluorescence. Specific conditions for reactivity should be optimized by the end user. Expect a band at approximately 46 kDa in Western Blots of specific cell lysates and tissues.

Assay Dilutions: All assays should be optimized by the user. Recommended dilutions (if any) may be listed below.

ELISA: 1:10,000 - 1:20,000

WB: 1-2 µg/mL

Formulation

Physical State: Liquid (sterile filtered)

Concentration: 1 mg/mL by UV absorbance at 280 nm

Buffer: 0.01 M Sodium Phosphate, 0.25 M Sodium Chloride, pH 7.2

Preservative: 0.02% (w/v) Sodium Azide

Stabilizer: None

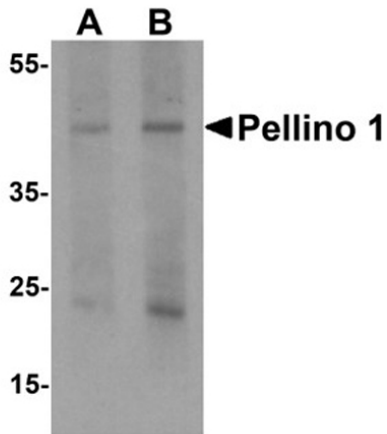
Shipping & Handling

Shipping Condition: Dry Ice

Storage Condition: Store vial at -20° C prior to opening. Aliquot contents and freeze at -20° C or below for extended storage. Avoid cycles of freezing and thawing. Centrifuge product if not completely clear after standing at room temperature. This product is stable for several weeks at 4° C as an undiluted liquid. Dilute only prior to immediate use.

Expiration: Expiration date is one (1) year from date of receipt.

Images



Western Blot

Western blot analysis of Pellino 1.

Load: human liver tissue lysate.

Primary Antibody: Pellino 1 antibody at (A) 1 and (B) 2 $\mu\text{g/mL}$.

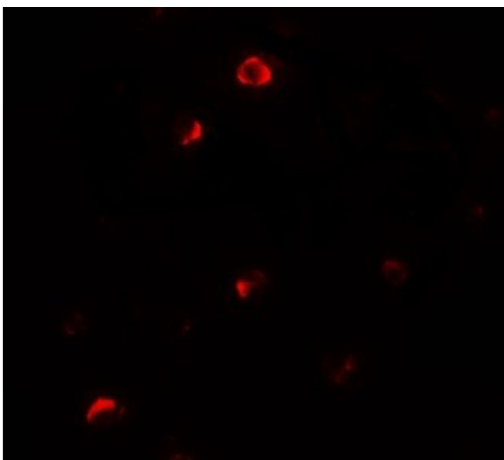


Immunocytochemistry

Immunocytochemistry of Pellino 1.

Cell: HepG2 cells.

Primary Antibody: Pellino 1 antibody at 2.5 $\mu\text{g/ml}$.



Immunofluorescence Microscopy

Immunofluorescence of Pellino 1.

Cell: HepG2 cells.

Primary Antibody: Pellino 1 antibody at 20 $\mu\text{g/ml}$.

Disclaimer

This product is for research use only and is not intended for therapeutic or diagnostic applications. Please contact a technical service representative for more information. All products of animal origin manufactured by Rockland Immunochemicals are derived from starting materials of North American origin. Collection was performed in United States Department of Agriculture (USDA) inspected facilities and all materials have been inspected and certified to be free of disease and suitable for exportation. All properties listed are typical characteristics and are not specifications. All suggestions and data are offered in good faith but without guarantee as conditions and methods of use of our products are beyond our control. All claims must be made within 30 days following the date of delivery. The prospective user must determine the suitability of our materials before adopting them on a commercial scale. Suggested uses of our products are not recommendations to use our products in violation of any patent or as a license under any patent of Rockland Immunochemicals, Inc. If you require a commercial license to use this material and do not have one, then return this material, unopened to: Rockland Inc., P.O. BOX 5199, Limerick, Pennsylvania, USA.