

Datasheet for 600-401-DK6**PDCL3 Antibody****Overview**

| | |
|----------------------|--|
| Description: | Anti-PDCL3 (RABBIT) Antibody - 600-401-DK6 |
| Item No.: | 600-401-DK6 |
| Size: | 100 µg |
| Applications: | ELISA, IF, IHC, WB |
| Reactivity: | Human, Mouse, Rat |
| Host Species: | Rabbit |

Product Details

| | |
|----------------------|---|
| Background: | Phosducin-like proteins (PhLPs) are a conserved family of proteins with thioredoxin-like domains that were initially identified as modulators of G protein signaling (1,2). PDCL3 is highly homologous to PDCL and shares an N-terminal helix domain and a C-terminal thioredoxin-fold (Trx-fold) domain (3). Along with the related protein PDCL2, PDCL3 interacts with the chaperonin CCT and modulates CCT-mediated actin and tubulin folding (4). Modulation of PDCL3 levels by MAPK phosphorylation and RhoA-dependent changes also promote cytoskeletal remodeling (5). |
| Synonyms: | PDCL3 Antibody, VIAF, PHLP3, VIAF1, HTPHLP, PHLP2A, PhLP2A, Phosducin-like protein 3, VIAF-1 |
| Host Species: | Rabbit |
| Clonality: | Polyclonal |
| Format: | IgG |

Target Details

| | |
|------------------------|--|
| Gene Name: | PDCL3 |
| Reactivity: | Human, Mouse, Rat |
| Immunogen Type: | Conjugated Peptide |
| Immunogen: | Anti-PDCL3 antibody was prepared from whole rabbit serum produced by repeated immunizations with a 14 amino acid peptide near the C-terminus of human PDCL3. |

Purity/Specificity: Anti-PDCL3 antibody was affinity purified from monospecific antiserum by immunoaffinity chromatography. PDCL3 antibody is human, mouse and rat reactive. PDCL3 antibody is predicted to not cross-react with other members of the PDCL protein family.

Relevant Links:

- [UniProtKB - Q9H2J4](#)
- [GeneID - 79031](#)
- [NCBI - NP_076970](#)

Application Details

Tested Applications: ELISA, IF, IHC, WB

Application Note: Anti-PDCL3 Antibody has been tested for use in ELISA, Western Blotting, Immunohistochemistry and Immunofluorescence. Specific conditions for reactivity should be optimized by the end user. Expect a band at approximately 28 kDa in Western Blots of specific cell lysates and tissues.

Assay Dilutions: All assays should be optimized by the user. Recommended dilutions (if any) may be listed below.

ELISA: 1:10,000 - 1:20,000

IF: 20 µg/mL

IHC: 5 µg/mL

WB: 1-2 µg/mL

Formulation

Physical State: Liquid (sterile filtered)

Concentration: 1 mg/mL by UV absorbance at 280 nm

Buffer: 0.01 M Sodium Phosphate, 0.25 M Sodium Chloride, pH 7.2

Preservative: 0.02% (w/v) Sodium Azide

Stabilizer: None

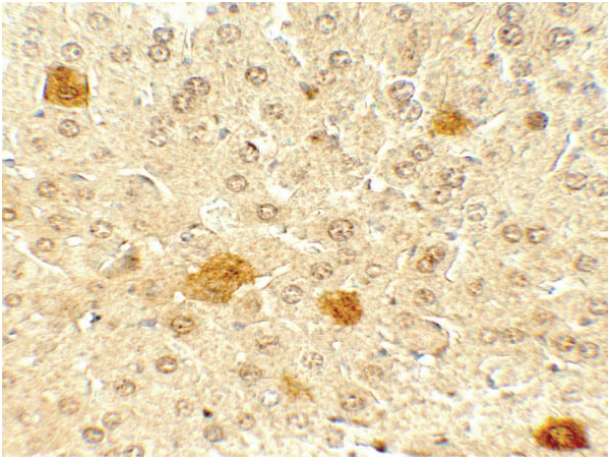
Shipping & Handling

Shipping Condition: Dry Ice

Storage Condition: Store vial at -20° C prior to opening. Aliquot contents and freeze at -20° C or below for extended storage. Avoid cycles of freezing and thawing. Centrifuge product if not completely clear after standing at room temperature. This product is stable for several weeks at 4° C as an undiluted liquid. Dilute only prior to immediate use.

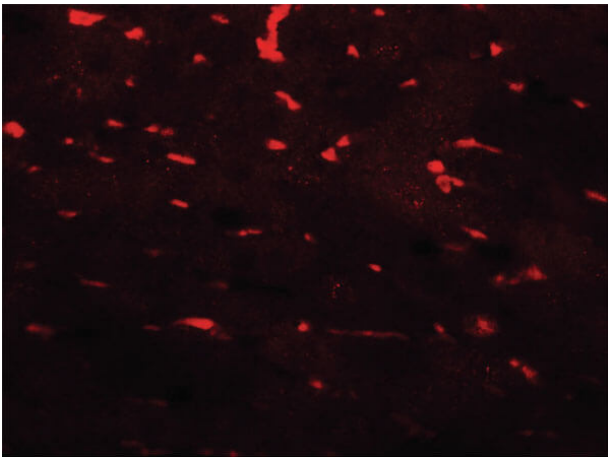
Expiration: Expiration date is one (1) year from date of receipt.

Images



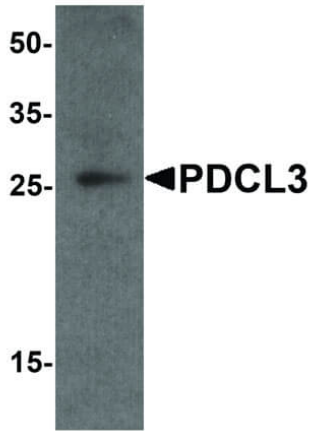
Immunohistochemistry

Immunohistochemistry of Rabbit anti-PDCL3 antibody. Tissue: mouse liver. Primary antibody: PDCL3 antibody at 5 $\mu\text{g}/\text{mL}$. Secondary antibody: Peroxidase rabbit secondary antibody at 1:5,000. Localization: PDCL3 is secreted. Staining: PDCL3 as precipitated brown signal.



Immunofluorescence Microscopy

Immunofluorescence Microscopy of Rabbit anti-PDCL3 antibody. Tissue: mouse liver. Primary antibody: PDCL3 antibody at 20 $\mu\text{g}/\text{mL}$. Secondary antibody: Fluorescein rabbit secondary antibody at 1:20,000. Localization: PDCL3 is secreted. Staining: PDCL3 as red fluorescent signal.

**Western Blot**

Western Blot of Rabbit anti-PDCL3 antibody. Lane A: human brain tissue lysate. Primary antibody: PDCL3 antibody at 1 $\mu\text{g}/\text{mL}$ overnight at 4C. Secondary antibody: Goat anti-Rabbit HRP secondary antibody. Block: 5% BLOTTO. Predicted/Observed size: 26 kDa, 25 kDa for PDCL3 .

Disclaimer

This product is for research use only and is not intended for therapeutic or diagnostic applications. Please contact a technical service representative for more information. All products of animal origin manufactured by Rockland Immunochemicals are derived from starting materials of North American origin. Collection was performed in United States Department of Agriculture (USDA) inspected facilities and all materials have been inspected and certified to be free of disease and suitable for exportation. All properties listed are typical characteristics and are not specifications. All suggestions and data are offered in good faith but without guarantee as conditions and methods of use of our products are beyond our control. All claims must be made within 30 days following the date of delivery. The prospective user must determine the suitability of our materials before adopting them on a commercial scale. Suggested uses of our products are not recommendations to use our products in violation of any patent or as a license under any patent of Rockland Immunochemicals, Inc. If you require a commercial license to use this material and do not have one, then return this material, unopened to: Rockland Inc., P.O. BOX 5199, Limerick, Pennsylvania, USA.