

Datasheet for 600-401-DK5**PDCL2 Antibody****Overview**

Description:	Anti-PDCL2 (RABBIT) Antibody - 600-401-DK5
Item No.:	600-401-DK5
Size:	100 µg
Applications:	ELISA, WB
Reactivity:	Human, Mouse, Rat
Host Species:	Rabbit

Product Details

Background:	Phosducin-like proteins (PhLPs) are a conserved family of proteins with thioredoxin-like domains that were initially identified as modulators of G protein signaling (1,2). PDCL2 is highly homologous to PDCL and shares an N-terminal helix domain and a C-terminal thioredoxin-fold (Trx-fold) domain (3). PDCL2 has been shown to interact with the chaperonin CCT and is essential for cytoskeletal protein function and cell cycle progression (4).
Synonyms:	PDCL2 Antibody, GCPHLP, Phosducin-like protein 2
Host Species:	Rabbit
Clonality:	Polyclonal
Format:	IgG

Target Details

Gene Name:	PDCL2
Reactivity:	Human, Mouse, Rat
Immunogen Type:	Conjugated Peptide
Immunogen:	Anti-PDCL2 antibody was prepared from whole rabbit serum produced by repeated immunizations with an 18 amino acid peptide near the C-terminus of human PDCL2.
Purity/Specificity:	Anti-PDCL2 antibody was affinity purified from monospecific antiserum by immunoaffinity chromatography. PDCL2 antibody is human, mouse and rat reactive. PDCL2 antibody is predicted to not cross-react with other members of the PDCL protein family.

Relevant Links:	<ul style="list-style-type: none">• UniProtKB - Q8N4E4• GeneID - 132954• NCBI - NP_689614
------------------------	---

Application Details

Tested Applications:	ELISA, WB
Application Note:	Anti-PDCL2 Antibody has been tested for use in ELISA and Western Blotting. Specific conditions for reactivity should be optimized by the end user. Expect a band at approximately 28 kDa in Western Blots of specific cell lysates and tissues.
Assay Dilutions:	All assays should be optimized by the user. Recommended dilutions (if any) may be listed below.
ELISA:	1:10,000 - 1:20,000
WB:	1-2 µg/mL

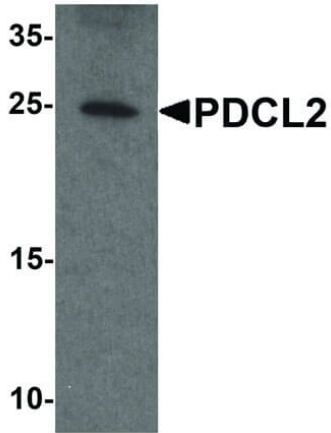
Formulation

Physical State:	Liquid (sterile filtered)
Concentration:	1 mg/mL by UV absorbance at 280 nm
Buffer:	0.01 M Sodium Phosphate, 0.25 M Sodium Chloride, pH 7.2
Preservative:	0.02% (w/v) Sodium Azide
Stabilizer:	None

Shipping & Handling

Shipping Condition:	Dry Ice
Storage Condition:	Store vial at -20° C prior to opening. Aliquot contents and freeze at -20° C or below for extended storage. Avoid cycles of freezing and thawing. Centrifuge product if not completely clear after standing at room temperature. This product is stable for several weeks at 4° C as an undiluted liquid. Dilute only prior to immediate use.
Expiration:	Expiration date is one (1) year from date of receipt.

Images

**Western Blot**

Western Blot of Rabbit anti-PDCL2 antibody. Lane A: rat liver tissue lysate. Primary antibody: PDCL2 antibody at 1 µg/mL overnight at 4°C. Secondary antibody: Goat anti-Rabbit HRP secondary antibody. Block: 5% BLOTTO. Predicted/Observed size: 27 kDa, 25 kDa for PDCL2.

Disclaimer

This product is for research use only and is not intended for therapeutic or diagnostic applications. Please contact a technical service representative for more information. All products of animal origin manufactured by Rockland Immunochemicals are derived from starting materials of North American origin. Collection was performed in United States Department of Agriculture (USDA) inspected facilities and all materials have been inspected and certified to be free of disease and suitable for exportation. All properties listed are typical characteristics and are not specifications. All suggestions and data are offered in good faith but without guarantee as conditions and methods of use of our products are beyond our control. All claims must be made within 30 days following the date of delivery. The prospective user must determine the suitability of our materials before adopting them on a commercial scale. Suggested uses of our products are not recommendations to use our products in violation of any patent or as a license under any patent of Rockland Immunochemicals, Inc. If you require a commercial license to use this material and do not have one, then return this material, unopened to: Rockland Inc., P.O. BOX 5199, Limerick, Pennsylvania, USA.